



**HAL**  
open science

## Care trajectories among people living with HIV and followed within a universal test and treat programme in rural South Africa (ANRS 12249 TasP trial)

Andréa Gosset, Camelia Protopopescu, Nonhlanhla Okesola, Bruno Spire, Joseph Larmarange, Joanna Orne-Gliemann, Nuala Mcgrath, Deenan Pillay, François Dabis, Collins Iwuji, et al.

### ► To cite this version:

Andréa Gosset, Camelia Protopopescu, Nonhlanhla Okesola, Bruno Spire, Joseph Larmarange, et al.. Care trajectories among people living with HIV and followed within a universal test and treat programme in rural South Africa (ANRS 12249 TasP trial). 9th IAS Conference on HIV Science, Jul 2017, Paris, France. ird-04119717

**HAL Id: ird-04119717**

**<https://ird.hal.science/ird-04119717>**

Submitted on 6 Jun 2023

**HAL** is a multi-disciplinary open access archive for the deposit and dissemination of scientific research documents, whether they are published or not. The documents may come from teaching and research institutions in France or abroad, or from public or private research centers.

L'archive ouverte pluridisciplinaire **HAL**, est destinée au dépôt et à la diffusion de documents scientifiques de niveau recherche, publiés ou non, émanant des établissements d'enseignement et de recherche français ou étrangers, des laboratoires publics ou privés.

# Care trajectories among people living with HIV and followed within a universal test and treat programme in rural South Africa (ANRS 12249 TasP trial)



Abstract number: WEPED1454

Andréa Gosset<sup>1,2</sup>, Camelia Protopopescu<sup>1,2</sup>, Nonhlanhla Okesola<sup>3</sup>, Bruno Spire<sup>1,2</sup>, Joseph Larmarange<sup>4,3</sup>, Joanna Orne-Gliemann<sup>5,6</sup>, Nuala McGrath<sup>7,3,8</sup>, Deenan Pillay<sup>3,9</sup>, François Dabis<sup>5,6</sup>, Collins Iwuji<sup>3,8,10</sup>, Sylvie Boyer<sup>1</sup>

1. Aix Marseille Univ, INSERM, IRD, SESSTIM, Sciences Economiques & Sociales de la Santé & Traitement de l'Information Médicale, Marseille, France ;  
2. ORS PACA, Observatoire Régional de la Santé Provence-Alpes-Côte d'Azur, F-13006, Marseille, France ;  
3. Africa Health Research Institute, KwaZulu-Natal, South Africa ;  
4. Ceped UMR 196 (Paris Descartes IRD), SageSud ERL Inserm 1244, IRD, Paris, France ;

5. Univ. Bordeaux, Inserm, Bordeaux Population Health Research Center, UMR 1219, F-33000 Bordeaux, France ;  
6. Inserm, ISPED, Bordeaux Population Health Research Center, UMR 1219, F-33000 Bordeaux, France ;  
7. Faculty of Medicine and Faculty of Human, Social and Mathematical Sciences, University of Southampton, United Kingdom ;

8. Research Department of Infection and Population Health, University College London, United Kingdom.  
9. University College London, Division of Infection and Immunity, London, United Kingdom  
10. Department of Global Health & Infection, Brighton and Sussex Medical School, Falmer, Brighton, United Kingdom

## Background

- Retention in care is essential to optimize antiretroviral treatment (ART) impact on viral suppression and ensure the success of the universal test and treat (UTT) strategy
- In September 2016, South Africa adopted the latest World Health Organization (WHO) guidelines on Antiretroviral therapy (ART) suggesting to start ART immediately after HIV diagnosis, regardless of CD4 count
- Barriers to maintaining patients in care in a UTT setting need to be documented so that appropriate actions may be undertaken to address the difficulties
- The TasP cluster-randomized trial conducted in rural South Africa between 2012 and 2016 provided the opportunity to investigate retention in care among ART-eligible patients within a large UTT programme

## Objectives

- To identify care trajectories among patients who linked to care after HIV diagnosis and who were ART-eligible at their first clinic visit
- To investigate factors associated with care trajectories

## Methods

### Setting:

- The ANRS 12249 TasP is a cluster-randomized trial implemented in the Hlabisa sub-district, located in northern KwaZulu-Natal in South-Africa, which is a largely rural area with scattered homesteads and an estimated HIV prevalence of 29%.
- Trial primary objective was to estimate the impact of immediate ART just after positive diagnosis on HIV incidence among the population of the Hlabisa sub-district.
- All trial participants identified as HIV-infected during home-based HIV testing were referred to trial clinic located at less than 5 km from their homes and offered immediate ART (intervention arm) or according to national guidelines (control arm).
- Clinical follow-up in trial clinics was offered monthly for patients initiating ART and quarterly for patients in pre-ART.

### Study population = all HIV-infected patients

- Linked to a trial clinic
- ART-eligible at their first visit
- Having at least 18 months of follow-up at the end of data collection (30th June 2016)
- Still alive after the first three months of follow-up

### Outcome variable = Retention in care defined each month as :

- 1 = lost from trial clinic
- 0 = retained in trial clinic
- A patient was considered to be exiting care if:
  - he/she was more than 3 months late for his last appointment
  - he/she was dead or transferred out

### Statistical analysis:

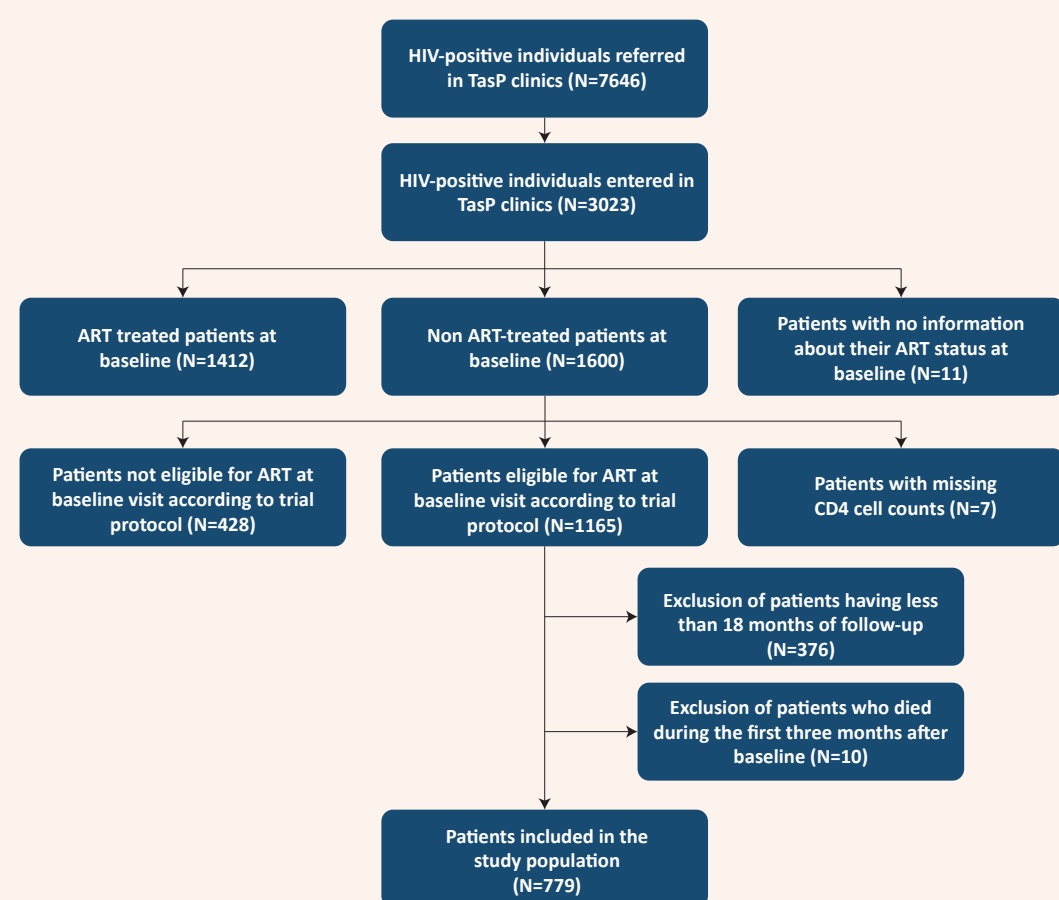
- Care trajectories assessed over 18 months of follow-up were estimated using Group-Based Trajectory Modelling (GBTM)
- GBTM is a semi-parametric mixture modelling procedure for longitudinal data that identify trajectories groups over time and analyse the factors associated with these groups
- The probability of group membership was estimated with a multinomial logistic model
- The optimal number of groups was determined using the Bayesian Information Criterion (BIC)

### Covariates (defined at the first clinic visit except ART status defined at month 1):

- Socio-demographic characteristics : gender, age (16-29; 30-39; ≥40), partner
- Economic factors: household wealth assets, employment
- Psychosocial factors: disclosure, social support
- Stigma and treatment perception factors
- Clinical variables: newly diagnosed, CD4
- Geographical accessibility: distance to TasP clinic, and clusters
- Trial arm (intervention versus control)
- ART status at M1

## Results

Figure 1: Flow chart of the study population

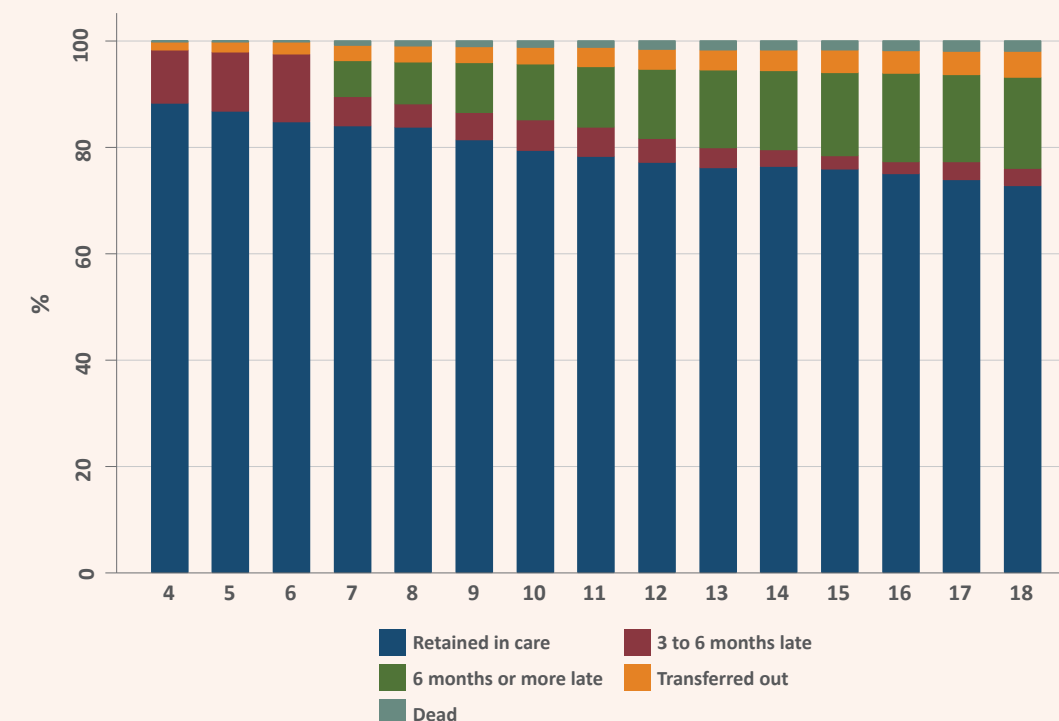


The study population included 779 HIV-individuals

### Main characteristics of the study population:

- 66.5% entered in TasP clinic within 1 month after referral
- 70.5% of women
- Median [IQR] age : 35 [27.5; 46.6] years at the first clinic visit
- Median [IQR] follow-up period: 7 [4; 11] months
- 11.8% of patients were newly diagnosed at the time of referral
- 19.6% had CD4 between 350 and 500 cells/mm<sup>3</sup> and 26.3% had CD4 > 500 cells/mm<sup>3</sup>
- 53.9% had initiated ART one month after the first clinic visit

Figure 2: Clinical follow-up status of ART-eligible patients at baseline visit from the 4<sup>th</sup> month to the 18<sup>th</sup> month of follow-up



### Four trajectory groups were identified:

- Group 1 = patients always in care:**
  - N=554 (71.1%)
  - 552/554 (99.6%) patients initiated ART during the period of follow up and 62.1% initiated ART within 1 month
  - Median [IQR] number of days between first clinic visit and ART initiation = 23 [15-42]
- Group 2 = patients leaving care then returned**
  - N=39 (5.0%)
  - Median [IQR] time to return in care = 4 [3-8] months
  - 33/39 (84.6%) patients initiated ART during the period of follow up and 5.1% initiated ART within 1 month
  - Median [IQR] number of days between first clinic visit and ART initiation = 351 [217-449]
- Group 3 = patients leaving care later**
  - N=87 (11.2%)
  - Median [IQR] time of leaving care = 11 [9-13] months
  - 76/87 (87.4%) patients initiated ART during the period of follow up and 56.3% initiated ART within 1 month
  - Median [IQR] number of days between first clinic visit and ART initiation = 24 [16; 41]
- Group 4 = patients leaving care rapidly:**
  - N=99 (12.7%)
  - Median [IQR] time of leaving care = 4 [4-6] months
  - 44/99 (44.4%) patients initiated ART during the period of follow up and 25.3% initiated ART within 1 month
  - Median [IQR] number of days between first clinic visit and ART initiation = 27.5 [15.5-49.5]

Figure 3: Follow-up trajectories in TasP clinics from the 4<sup>th</sup> to the 18<sup>th</sup> month of follow-up among ART-eligible patients at baseline visit

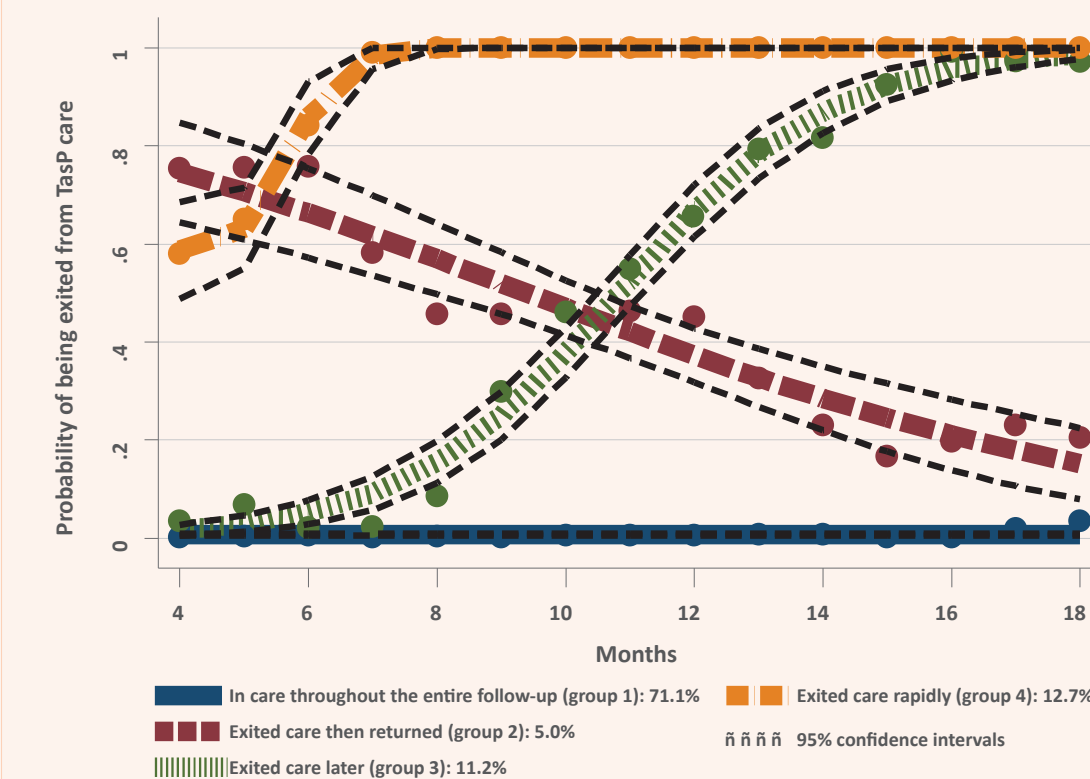


Figure 4: Clinical follow-up status of ART-eligible patients at baseline visit from the 4<sup>th</sup> month to the 18<sup>th</sup> month of follow-up, by trajectory group



Table 1: Factors associated with trajectory groups (N=738)

	Group 1 (Always in care) (ref.)	Group 2 (Leaving care then returned)	Group 3 (Leaving care later)	Group 4 (Leaving care rapidly)
<b>Risk factors – OR [95% CI]</b>				
Female & social support		1.00	1.00	1.00
Female & no social support		2.12 [0.7,6.2]	0.56 [0.2,1.4]	2.22* [1.2,4.3]
Male & social support		3.45** [1.4,8.3]	1.66 [0.9,3.1]	1.47 [0.8,2.8]
Male & no social support		3.01 [0.8,11.3]	1.55 [0.6,3.8]	1.59 [0.6,4.0]
+40 years old		1.00	1.00	1.00
30-39 years old		0.96 [0.3,2.8]	2.81** [1.3,5.9]	1.24 [0.6,2.5]
16-29 years old		3.43** [1.4,8.4]	4.80*** [2.4,9.8]	3.92*** [2.1,7.2]
Having a regular partner		1.00	1.00	1.00
No regular partner		2.82* [1.1,6.9]	1.28 [0.6,2.5]	1.62 [0.9,3.0]
Not newly diagnosed at referral		1.00	1.00	1.00
Newly diagnosed		0.90 [0.2,3.5]	5.62*** [3.0,10.7]	4.40*** [2.3,8.4]
CD4 ≤ 350		1.00	1.00	1.00
CD4 between ]350-500]		7.81*** [2.6,23.4]	0.73 [0.4,1.5]	0.73 [0.4,1.4]
CD4 > 500		5.11** [1.7,15.5]	0.79 [0.4,1.5]	0.77 [0.4,1.4]
Not on ART at M1		1.00	1.00	1.00
On ART at M1		0.03*** [0.0,0.2]	0.80 [0.5,1.3]	0.17*** [0.1,0.3]

\*\*\* p<0.001 \*\*p<0.01 \*p<0.05

## Acknowledgments

ANRS 12249 Study Group (by alphabetical order):  
Kathy Baisley, Eric Balestre, Till Bärnighausen, Brigitte Bazin, Sylvie Boyer, Alexandra Calmy, Vincent Calvez, Marie-Laure Chaix, François Dabis (co-PI), Anne Derache, Hassimou Diallo, Hermann Donfouet, Rosemary Dray-Spira, Jaco Dreyer, Kamal El Farouki, Ken Freedberg, Andréa Gosset, Kobus Herbst, John Imrie, Maxime Ingels, Collins Iwuji (Coordinator South), Sophie Karcher, Joseph Larmarange, France Lert, Richard Lessells, Themba Makowa, Anne-Geneviève Marcelin, Laura March, Kevi Naidu, Colin Newell, Marie-Louise Newell (co-PI), Nuala McGrath, Nonhlanhla Okesola, Tulio de Oliveira, Joanna Orne-Gliemann (Coordinator North), Delphine Perriat, Deenan Pillay (co-PI), Mélanie Plazy, Mélanie Prague, Camélia Protopopescu, Claire Rekaewicz, Tamsen Rochat, Bruno Spire, Frank Tanser, Rodolphe Thiébaud, Thierry Tiendrebeogo, Johannes Viljoen, Thembelele Zuma.

## Conclusion

- About three quarters of patients were retained in care
- But a significant proportion of patients exited care at different follow-up times :
  - 12.7% exited care rapidly (in majority within 4-6 months after the first clinic visit)
  - 11.2% exited care later (in majority within 9-13 months after the first clinic visit)
  - 5% exited care and then returned
- No arm effect (intervention vs. control arm) but initiating ART rapidly (within the first month after the first clinic visit) was a major protective factor of exiting care
- Newly HIV diagnosed and young patients had a higher risk of exiting care
- Lack of social support was a risk factor of exiting care rapidly for women
- Men were at higher risk of exiting care and returning

Contact: andrea.gosset@inserm.fr