



**HAL**  
open science

## **Bactris gasipaes Kunth var. gasipaes complete plastome and phylogenetic analysis**

Maria Camila Buitrago Acosta, Rommel Montúfar, Romain Guyot, Cédric Mariac, Timothy J. Tranbarger, Silvia Restrepo, Thomas L P Couvreur

► **To cite this version:**

Maria Camila Buitrago Acosta, Rommel Montúfar, Romain Guyot, Cédric Mariac, Timothy J. Tranbarger, et al. Bactris gasipaes Kunth var. gasipaes complete plastome and phylogenetic analysis. Mitochondrial DNA Part B Resources, 2022, 7 (8), pp.1540-1544. 10.1080/23802359.2022.2109437 . ird-04119645

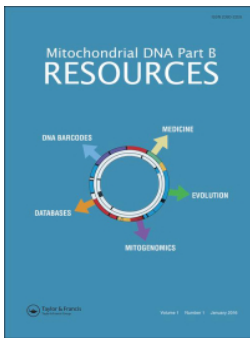
**HAL Id: ird-04119645**

**<https://ird.hal.science/ird-04119645v1>**

Submitted on 6 Jun 2023

**HAL** is a multi-disciplinary open access archive for the deposit and dissemination of scientific research documents, whether they are published or not. The documents may come from teaching and research institutions in France or abroad, or from public or private research centers.

L'archive ouverte pluridisciplinaire **HAL**, est destinée au dépôt et à la diffusion de documents scientifiques de niveau recherche, publiés ou non, émanant des établissements d'enseignement et de recherche français ou étrangers, des laboratoires publics ou privés.



## Mitochondrial DNA Part B Resources

ISSN: (Print) (Online) Journal homepage: <https://www.tandfonline.com/loi/tmdn20>

# *Bactris gasipaes* Kunth var. *gasipaes* complete plastome and phylogenetic analysis

Maria Camila Buitrago Acosta, Rommel Montúfar, Romain Guyot, Cedric Mariac, Timothy J. Tranbarger, Silvia Restrepo & Thomas L. P. Couvreur

To cite this article: Maria Camila Buitrago Acosta, Rommel Montúfar, Romain Guyot, Cedric Mariac, Timothy J. Tranbarger, Silvia Restrepo & Thomas L. P. Couvreur (2022) *Bactris gasipaes* Kunth var. *gasipaes* complete plastome and phylogenetic analysis, Mitochondrial DNA Part B, 7:8, 1540-1544, DOI: [10.1080/23802359.2022.2109437](https://doi.org/10.1080/23802359.2022.2109437)

To link to this article: <https://doi.org/10.1080/23802359.2022.2109437>



© 2022 The Author(s). Published by Informa UK Limited, trading as Taylor & Francis Group.



[View supplementary material](#)



Published online: 26 Aug 2022.



[Submit your article to this journal](#)



Article views: 37



[View related articles](#)



[View Crossmark data](#)

## *Bactris gasipaes* Kunth var. *gasipaes* complete plastome and phylogenetic analysis

Maria Camila Buitrago Acosta<sup>a</sup>, Rommel Montúfar<sup>b,†</sup>, Romain Guyot<sup>c,d</sup>, Cedric Mariac<sup>c</sup>, Timothy J. Tranbarger<sup>c</sup>, Silvia Restrepo<sup>a</sup> and Thomas L. P. Couvreur<sup>c,b,†</sup>

<sup>a</sup>Laboratorio de Micología y Fitopatología, Universidad de los Andes, Bogotá, Colombia; <sup>b</sup>Facultad de Ciencias Exactas y Naturales, Pontificia Universidad Católica del Ecuador, Quito, Ecuador; <sup>c</sup>DIADÉ, Univ Montpellier, CIRAD, IRD, Montpellier, France; <sup>d</sup>Department of Electronics and Automation, Universidad Autónoma de Manizales, Manizales, Colombia

### ABSTRACT

*Bactris gasipaes* var. *gasipaes* (Arecaceae, Palmae) is an economically and socially important plant species for populations across tropical South and Central America. It has been domesticated from its wild variety, *B. gasipaes* var. *chichagui*, since pre-Columbian times. In this study, we sequenced the plastome of the cultivated variety, *B. gasipaes* Kunth var. *gasipaes* and compared it with the published plastome of the wild variety. The chloroplast sequence obtained was 156,580 bp. The cultivated chloroplast sequence was conserved compared to the wild type sequence with 99.8% of nucleotide identity. We did, however, identify multiple Single Nucleotide Variants (SNVs), insertions, microsatellites and a resolved region of missing nucleotides. A SNV in one of the core barcode markers (*matK*) was detected between the wild and cultivated accessions. Phylogenetic analysis was carried out across the Arecaceae family and compared to previous reports, resulting in an identical topology. This study is a step forward in understanding the genome evolution of this species.

### ARTICLE HISTORY

Received 1 May 2022  
Accepted 1 August 2022

### KEYWORDS



Chloroplast; plastome;  
Novoplasty; peach  
palm; phylogeny

### Introduction

The palm family Arecaceae (Palmae) consists of more than 2,500 species (Dransfield et al. 2008), including macroeconomically important taxa. The only fully-domesticated palm from the Neotropics since pre-Columbian times is *Bactris gasipaes* Kunth (Clement 1988). This species is cultivated from Brazil to Mexico, where it is important for local populations and a staple food for Amerindian people (Clement 1988; Graefe et al. 2013). Two varieties are recognized within the species: the cultivated or domesticated variety *B. gasipaes* var. *gasipaes* and the wild variety *B. gasipaes* var. *chichagui* (Henderson 2000; Couvreur et al. 2007). Both varieties are quite similar in their overall vegetative morphology. However, the fruits from the domesticated type are much larger (3–8 cm in diameter versus 1–2 cm in the wild type, Henderson 2000) with a thicker mesocarp, being up to two hundred times heavier than the wild fruit, which represents a clear domestication syndrome (Clement et al. 2021). The fruits of *Bactris gasipaes* have traditionally been consumed as a source of carbohydrates and lipids throughout the Neotropics, and are generally prepared as fermented drinks (e.g. chicha), flours or eaten as such after cooking (Clement and Urpí 1897). The more recent and modern commercial


exploitation of *B. gasipaes* palm hearts is widely extended into tropical lowlands of Central and South America, as well as the use of its wood for furniture and construction (Montúfar and Rosas 2013, Couvreur et al. 2006).

Molecular studies have focused on characterizing its local diversity and germplasm collections, as well as exploring the origins of the domestication process using molecular markers (SSRs, RAPD) and chloroplastic sequences (Hernández-Ugalde et al. 2011; Rodrigues et al. 2005; Galluzzi et al. 2015; Clement et al. 2017; Santos da Silva et al. 2021) or to understand the genetic relationships and gene flow between both varieties (Couvreur et al. 2006, Couvreur et al. 2007; Hernández-Ugalde et al. 2011). In this context, it is necessary to develop new genomic tools to explore evolutionary, ecological and agricultural issues, in particular to better unravel its intriguing domestication history across the Neotropics (Galluzzi et al. 2015; Clement et al. 2017). A complete chloroplast sequence for *B. gasipaes* Kunth var. *chichagui* (the wild variety) was recently published (Santos da Silva et al. 2021) and opened the way to explore the origins of its domestication. The goal of this work was (i) to characterize the complete plastome of *B. gasipaes* var. *gasipaes* (domesticated variety), (ii) compare it with the plastome of *B. gasipaes* var.

**CONTACT** Thomas L. P. Couvreur  [thomas.couvreur@ird.fr](mailto:thomas.couvreur@ird.fr)  Facultad de Ciencias Exactas y Naturales, Pontificia Universidad Católica del Ecuador, Quito, Ecuador

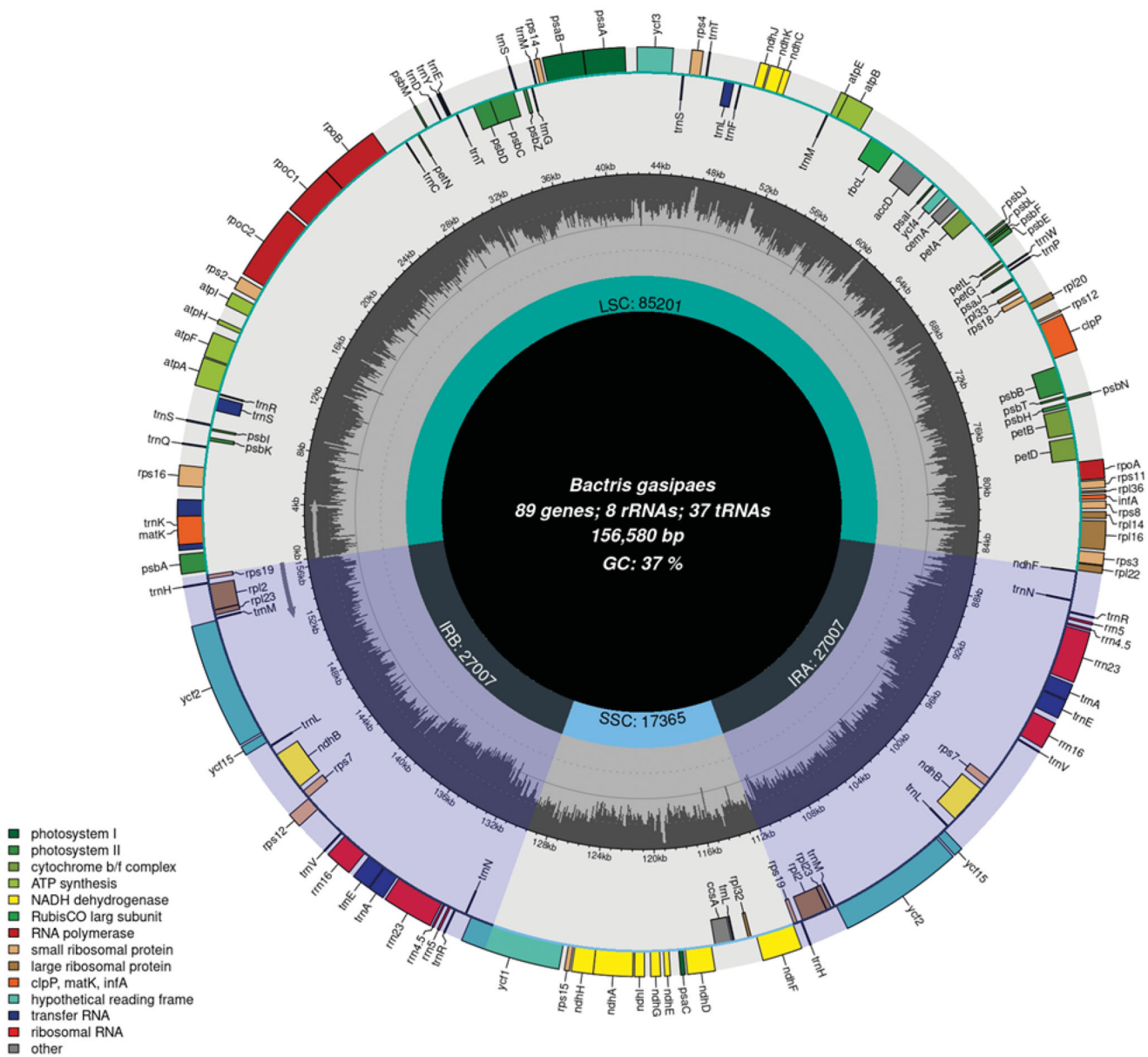
\*Current address: 612 Wilson Road, 140 Plant Biology Laboratory, East Lansing, MI 48824-1312.

†These authors contributed equally to this work and should be considered as co-senior authors.

 Supplemental data for this article is available online at <https://doi.org/10.1080/23802359.2022.2109437>

© 2022 The Author(s). Published by Informa UK Limited, trading as Taylor & Francis Group.

This is an Open Access article distributed under the terms of the Creative Commons Attribution License (<http://creativecommons.org/licenses/by/4.0/>), which permits unrestricted use, distribution, and reproduction in any medium, provided the original work is properly cited.



**Figure 1.** Annotation of the *B. gasipaes* Kunth var. *gasipaes* chloroplast genome. Information including the number of genes, rRNAs and tRNAs and %GC is presented in the inner circle. Large single copy (LSC), Single short copy (SSC) and inverted repeat regions (IRA and IRB) are marked. The outer circle represents the genes annotated, classified by color based on their function.

*chichagui* (wild variety), and (iii) reconstruct a phylogenetic tree using this newly acquired plastome with different species of the Arecaceae family.

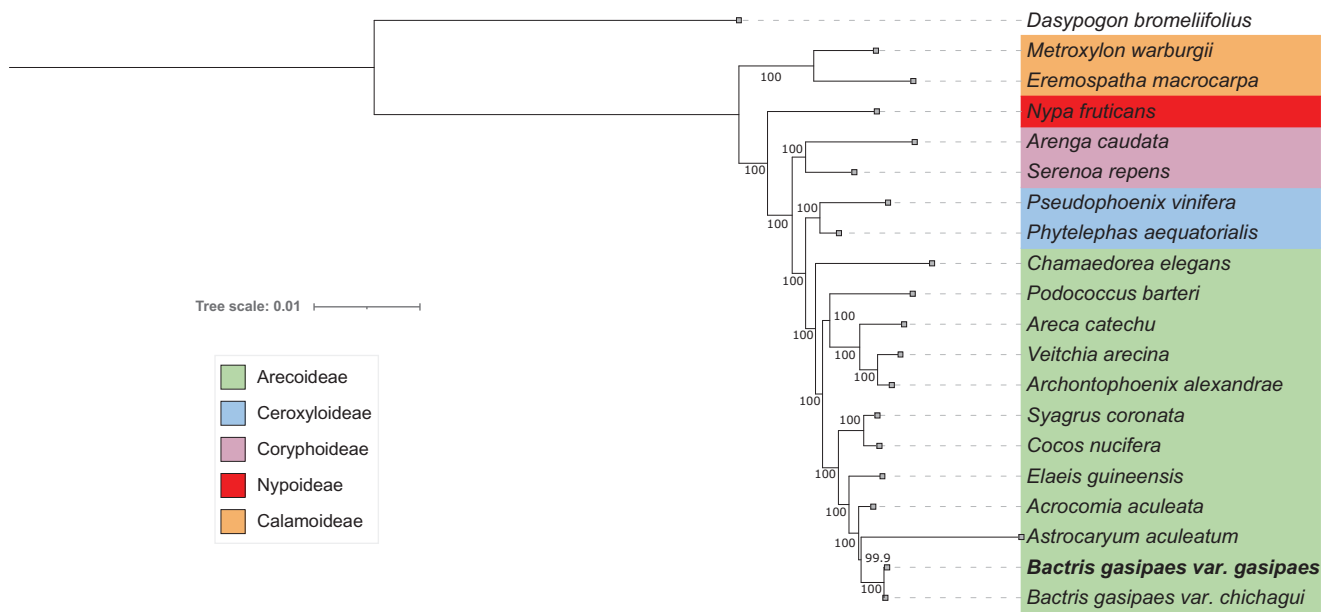
## Materials and methods

We sampled a domesticated individual of *Bactris gasipaes* Kunth var. *gasipaes* from North-Western Ecuador, in the Maship area (farm of Alejandro Solano, 0°10'54.1"N 78°54'37.1"W). The fruits of this specimen were also collected but were immature at the time, and thus no measurements were made. The young palm heart was collected in the field and immediately conserved in liquid nitrogen until total DNA was extracted the protocol of Mariac et al. (1970). The NGS library preparation follows Mariac et al. (2014). Total DNA extracted from leaves was sequenced (paired end, 150 bp) using Novaseq 6000 Illumina platform at the Novogene Co.,

Ltd. facilities. Sequence data were submitted to NCBI SRA section under the BioSample accession SAMN27503645.

Reads obtained were filtered by quality using Fastp. Kraken2 was used to filter possible contamination in the reads from other organisms using a database (PlusPFP) (Wood et al. 2019). NOVOPLASTY (Dierckxsens et al. 2017) was used to assemble the *Bactris gasipaes* var. *gasipaes* chloroplast sequence based on the *Elaeis guineensis* chloroplast reference genome (NC\_017602.1). Ten million pair-end reads were sampled and used.

CPGAVAS2 (Shi et al. 2019) was used to annotate the chloroplast sequence, graphical representation was obtained using Chloroplot (Zheng et al. 2020). A dot-plot was constructed to compare *B. gasipaes* var. *gasipaes* and *B. gasipaes* var. *chichagui* chloroplast sequences using Gepard (Krumstiek et al. 2007). A pairwise alignment using BLASTn and diffseq (EMBOSS) was constructed with *B. gasipaes* Kunth var.



**Figure 2.** Phylogenetic tree reconstructed with complete chloroplast genome sequences, using MAFFT to align and RAxML to construct the tree, bootstrap values are shown in the branches and species names from the same subfamilies are represented in different colors (*B. gasipaes* Kunth var. *gasipaes* OM047178, *B. gasipaes* Kunth var. *chichagui* NC\_058634.1 (Santos da Silva et al. 2021), *Acrocomia aculeata* NC\_037084.1, *Astrocaryum aculeatum* NC\_044482.1 (de Santana Lopes et al. 2018), *Cocos nucifera* NC\_022417.1 (Huang et al. 2013), *Syagrus coronata* NC\_029241.1, *Elaeis guineensis* NC\_017602.1 (Uthapaisanwong et al. 2012), *Archontophoenix alexandrae* NC\_046017.1 (Liu et al. 2020), *Areca catechu* NC\_050163.1 (Rajesh et al. 2020), *Veitchia arecina* NC\_029950.1, *Chamaedorea elegans* NC\_051509.1, *Podococcus barteri* NC\_027276.1 (Bethune et al. 2019), *Phytelephas aequatorialis* NC\_029957.1 (Barrett et al. 2016), *Pseudophoenix vinifera* NC\_020364.1 (Barrett et al. 2013), *Arenga caudata* NC\_029971.1 (Barrett et al. 2016), *Serenoa repens* NC\_029953.1 (Barrett et al. 2016), *Nypa fruticans* NC\_029958.1 (Barrett et al. 2016), *Eremospatha macrocarpa* NC\_029964.1 (Barrett et al. 2016), *Metroxylon warburgii* NC\_029959.1 (Barrett et al. 2016), *Dasyopogon bromeliifolius* NC\_020367.1 (Barrett et al. 2013).

*chichagui*, to analyze the presence of Single Nucleotide Variants (SNVs), insertions and deletions (Altschul et al. 1990; Aggeli et al. 2018). IRscope was used to analyze chloroplast junctions between inverted repeats and single copy regions (Amiryousefi et al. 2018). Finally, a phylogenetic tree was constructed between closed species of the family Arecaceae.

We sampled 17 outgroup palm species covering all subfamilies (Baker et al. 2009), and one species from the sister family to palms *Dasyopogonaceae* (*Dasyopogon bromeliifolius*) (Givnish et al. 2018). We also included the recently sequenced plastome of the wild variety *B. gasipaes* var. *chichagui*. No large rearrangement was identified between the sequences using dot-plot alignments. Plastomes were aligned using MAFFT version 7 (Kato et al. 2019). Phylogenetic inferences were carried out using RAxML version 7.2.7 using GTRCAT substitution model with all sites of the chloroplast sequence without gaps using the maximum likelihood method with bootstrap of 1,000 replicates (Stamatakis 2015).

The botanically vouchered specimen was deposited at the Herbario QCA (<https://bioweb.puce.edu.ec/QCA>; Pontificia Universidad Católica del Ecuador, Quito; [thomas.couvreur@ird.fr](mailto:thomas.couvreur@ird.fr)) and WAG (Naturalis, Leiden, The Netherlands) herbaria under the number *Couvreur & Tranbarger 1192* (collected 28 august 2018) and the DNA is deposited at the IRD center Montpellier, France (<http://www.ird.fr>; UMR DIADE; [thomas.couvreur@ird.fr](mailto:thomas.couvreur@ird.fr))

## Results and discussion

This work exploits the ability of NGS sequencing to produce a large quantity of reads in a very short time from total DNA.

These reads can be used to explore genome composition, identify variations and SNP markers, or assemble chloroplast genomes. Here, we obtained the chloroplast sequence of the domesticated variety of *B. gasipaes*. This is an important step toward understanding the evolution of this species.

Among the 10 million pair end reads, 174,750 reads were retained for assembly, giving an average depth of coverage of 190 X. The size of the reconstructed chloroplast genome of *B. gasipaes* Kunth var. *gasipaes* was 156,580 bp (Figure 1). A comparison between the *B. gasipaes* Kunth var. *gasipaes* and *B. gasipaes* Kunth var. *chichagui* genomes showed a contiguity through all the sequence and the presence of two inverted repetitions, common to the majority of plant chloroplast genomes (Supplementary Figure 1; Heinhorst and Cannon 1993). Even though the chloroplast sequences between these two varieties are highly similar, we observed 20 SNVs (Single Nucleotide Variants), 17 insertions of 1 base, 3 insertions of 2 bases, 2 insertions of 3 bases, 1 insertion of 4 bases and 2 insertions of 6 bases in the *B. gasipaes* Kunth var. *gasipaes* sequence. Also, we observed seven regions with mismatches, including a region with 20 unidentified nucleotides in the *B. gasipaes* Kunth var. *chichagui* that was resolved in the *B. gasipaes* Kunth var. *gasipaes* sequence assembly. We identified ten of these mutations in different coding sequences including *matK*, *rpoB* and *psaA* gene, among others (Supplementary table 1). CPGAVAS2 has identified 61 microsatellites for the *B. gasipaes* Kunth var. *chichagui* and 68 for *B. gasipaes* Kunth var. *gasipaes*. Among those, four are specific to the var. *chichagui* plastome and nine are specific to the var. *gasipaes*. Eighteen are conserved between both plastome, but with a length variation (Supplementary table 2).

Based on this sequence comparison between the *B. gasipaes* Kunth var. *chichagui* and *B. gasipaes* Kunth var. *gasipaes* plastomes, discrimination between these two accessions can be considered at the molecular level. DNA barcoding relies on coding and non-coding plastid markers to identify species. Generally, it is recommended to use the two plastids *rbcl*+*matk* coding regions (core markers) with eventually additional markers (CBOL Plant Working Group 2009) such as *trnH-psbA*, *atpF-atpH*, *psbK-psbI* or *trnL* (Hollingsworth et al. 2011). For this species, two barcodes *rbcl* (NCBI accessions JQ590428, JQ590427, JQ590426) and *matk* (JQ586697, JQ586696, JQ586695) have been developed by the International Barcode of Life project (iBOL; <http://ibol.org>). Of these, only *matk* shows a variation at one base and therefore could potentially be used to discriminate between wild and cultivated *B. gasipaes*. However, our sampling size is minimal and more samples should be sequenced to confirm this. A study using several accessions of both wild and cultivated *B. gasipaes* individuals did not find any variation for two non-coding plastid markers *trnD-trnT* and *trnQ-rps16* (Couvreur et al. 2007). Alternatively, full plastomes could be used as ultra-barcodes to distinguish more reliably wild and cultivated accessions as was done in Cacao (Kane et al. 2012). Finally, different predicted chloroplast microsatellite markers could also be used for this purpose but would still need to be tested and validated.

Moreover, we annotated 89 genes, 37 tRNAs and 8 rRNAs. When comparing junctions between inverted repeats and single copy regions, we observed differences in distance between genes and junctions compared with *B. gasipaes* Kunth var. *chichagui* and other related species. These positions are crucial to understand chloroplast genome evolution because they are related with chloroplast sequence expansion or contraction (Amiryousefi et al. 2018).

The phylogenetic analysis was based on 138,382 aligned sites with no gaps and we identified previously described relationships (Figure 2), congruent with previous studies with the family (Baker et al. 2009). Indeed, phylogenetic relations between subfamilies were well supported (bootstrap support > 94). Both varieties of *B. gasipaes* were recovered with maximum support as sister varieties within the Bactridineae tribe as found in previous phylogenetic studies of short plastid markers (Couvreur et al. 2007).

This resource will be useful for unraveling the domestication history of the cultivated variety (Clement et al. 2017), in particular from the perspective of seed dispersal.

## Ethics permission

We are grateful to Alejandro Solano to have allowed us access to the cultivated individual sequenced in this study. This research was done with the authorization of the Ecuadorian Ministry of Environment (MAE-DNB-CM-2018-0082).

## Authors' contributions

*Maria Camila Buitrago*: Bioinformatic analysis and paper drafting; *Rommel Montúfar*: field work, supervision of the project and manuscript writing; *Romain Guyot*: Interpretation of data and manuscript writing, *Cedric*

*Mariac*: Technical support, DNA extraction; *Timothy J. Tranbarger*: Field work, DNA extraction, manuscript writing, *Silvia Restrepo*: manuscript writing, *Thomas L.P. Couvreur*: Supervision of the project, field work, DNA extraction and manuscript writing.

## Disclosure statement

No potential conflict of interest was reported by the author(s).

## Funding

The authors thank the LMI BIO\_INCA (<http://bioinca.org>) and labex CEBA (<http://www.labex-ceba.fr>) for financial support.

## Data availability statement

The genome sequence data that support the findings of this study are openly available in Zenodo (doi: 10.5281/zenodo.6337604) and GenBank of NCBI under the accession number: OM047178. The associated Bioproject, Bio-Sample and SRA, are PRJNA825158, SAMN27503645, and SRR18697342, respectively.

## References

- Aggeli D, Karas VO, Sinnott-Armstrong NA, Varghese V, Shafer RW, Greenleaf WJ, Sherlock G. 2018. Diff-seq: a high throughput sequencing-based mismatch detection assay for DNA variant enrichment and discovery. *Nucleic Acids Res.* 46(7):e42.
- Altschul SF, Gish W, Miller W, Myers EW, Lipman DJ. 1990. Basic local alignment search tool. *J Mol Biol.* 215(3):403–410.
- Amiryousefi A, Hyvönen J, Poczei P. 2018. IRscope: an online program to visualize the junction sites of chloroplast genomes. *Bioinformatics.* 34(17):3030–3031.
- Baker WJ, Savolainen V, Asmussen-Lange CB, Chase MW, Dransfield J, Forest F, Harley MM, Uhl NW, Wilkinson M. 2009. Complete generic-level phylogenetic analyses of palms (Arecaceae) with comparisons of supertree and supermatrix approaches. *Syst Biol.* 58(2):240–256.
- Barrett CF, Baker WJ, Comer JR, Conran JG, Lahmeyer SC, Leebens-Mack JH, Li J, Lim GS, Mayfield-Jones DR, Perez L, et al. 2016. Plastid genomes reveal support for deep phylogenetic relationships and extensive rate variation among palms and other commelinid monocots. *New Phytol.* 209(2):855–870.
- Barrett CF, Davis JI, Leebens-Mack J, Conran JG, Stevenson DW. 2013. Plastid genomes and deep relationships among the commelinid monocot angiosperms. *Cladistics.* 29(1):65–87.
- Bethune K, Mariac C, Couderc M, Scarcelli N, Santoni S, Ardisson M, Martin JF, Montúfar R, Klein V, Sabot F, et al. 2019. Long-fragment targeted capture for long-read sequencing of plastomes. *Appl Plant Sci.* 7(5):e1243.
- CBOL Plant Working Group. 2009. A DNA barcode for land plants. *Proceedings of the National Academy of Sciences* 106, p. 12794–12797.
- Clement CR. 1988. Domestication of the peijibaye palm (*Bactris gasipaes*): past and present. *Advances in economic botany*, 155–174.
- Clement CR, Casas A, Parra-Rondinel FA, Levis C, Peroni N, Hanazaki N, Cortés-Zárraga L, Rangel-Landa S, Alves RP, Ferreira MJ. 2021. Disentangling domestication from food production systems in the neotropics. *Quaternary.* 4(1):4.
- Clement CR, Cristo-Araújo MD, Coppens d'Eeckenbrugge G, Reis VMD, Lehnebach R, Picanço-Rodrigues D. 2017. Origin and dispersal of domesticated peach palm. *Front Ecol Evol.* 5:148.
- Clement CR, Urpí JEM. 1987. Peijibaye palm (*Bactris gasipaes*, Arecaceae): multi-use potential for the lowland humid tropics. *Econ Bot.* 41(2): 302–311.
- Couvreur TLP, Billotte N, Risterucci A-M, Lara C, Vigouroux Y, Ludeña B, Pham J-L, Pintaud J-C. 2006. Close genetic proximity between cultivated and wild *Bactris gasipaes* Kunth revealed by microsatellite

- markers in Western Ecuador. *Genet Resour Crop Evol.* 53(7): 1361–1373.
- Couvreur TLP, Hahn WJ, Granville JJD, Pham JL, Ludena B, Pintaud JC. 2007. Phylogenetic relationships of the cultivated Neotropical palm *Bactris gasipaes* (Arecaceae) with its wild relatives inferred from chloroplast and nuclear DNA polymorphisms. *Systematic Botany.* 32(3):519–530.
- de Santana Lopes A, Gomes Pacheco T, Nimz T, do Nascimento Vieira L, Guerra MP, Nodari RO, de Souza EM, de Oliveira Pedrosa F, Rogalski M. 2018. The complete plastome of macaw palm [*Acrocomia aculeata* (Jacq.) Lodd. ex Mart.] and extensive molecular analyses of the evolution of plastid genes in Arecaceae. *Planta.* 247(4):1011–1030.
- Dierckxsens N, Mardulyn P, Smits G. 2017. NOVOPlasty: de novo assembly of organelle genomes from whole genome data. *Nucleic Acids Res.* 45(4):e18–e18.
- Dransfield J, Uhl NW, Asmussen CB, Baker WJ, Harley MM, Lewis CE. 2008. *Genera Palmarum: The evolution and classification of palms.* Kew Publishing, Kew, 732 pp.
- Galluzzi G, Dufour D, Thomas E, Zonneveld M van, Salamanca AFE, Toro AG, Rivera A, Duque HS, Baron HS, Gallego G, Scheldeman X, Mejia AG. 2015. An Integrated hypothesis on the domestication of *Bactris gasipaes*. *PLOS ONE* 10: e0144644. doi:10.1371/journal.pone.0144644
- Givnish TJ, Zuluaga A, Spalink D, Soto Gomez M, Lam VKY, Saarela JM, Sass C, Iles WJD, de Sousa DJL, Leebens-Mack J. 2018. Monocot plastid phylogenomics, timeline, net rates of species diversification, the power of multi-gene analyses, and a functional model for the origin of monocots. *Am J Bot.* 105(11):1888–1910.
- Graefe S, Dufour D, Van Zonneveld M, Rodriguez F, Gonzalez A. 2013. Peach palm (*Bactris gasipaes*) in tropical Latin America: implications for biodiversity conservation, natural resource management and human nutrition. *Biodivers Conserv.* 22(2):269–300.
- Heinhorst S, Cannon GC. 1993. DNA replication in chloroplasts. *J Cell Sci.* 104(1):1–9.
- Henderson A. 2000. *Bactris* (Palmae). Bronx: Organization for Flora Neotropica.
- Hernández-Ugalde JA, Mora-Urpí J, Rocha OJ. 2011. Genetic relationships among wild and cultivated populations of peach palm (*Bactris gasipaes* Kunth, Palmae): evidence for multiple independent domestication events. *Genet Resour Crop Evol.* 58(4):571–583. doi: 10.1007/s10722-010-9600-6
- Hollingsworth PM, Graham SW, Little DP. 2011. Choosing and using a plant DNA barcode. *PLoS One.* 6(5):e19254.
- Huang YY, Matzke AJ, Matzke M. 2013. Complete sequence and comparative analysis of the chloroplast genome of coconut palm (*Cocos nucifera*). *PLoS One.* 8(8):e74736.
- Kane N, Sveinsson S, Dempewolf H, Yang JY, Zhang D, Engels JMM, Cronk Q. 2012. Ultra-barcoding in cacao (*Theobroma* spp.; Malvaceae) using whole chloroplast genomes and nuclear ribosomal DNA. *Am J Bot.* 99(2):320–329.
- Katoh K, Rozewicki J, Yamada KD. 2019. MAFFT online service: multiple sequence alignment, interactive sequence choice and visualization. *Brief Bioinform.* 20(4):1160–1166.
- Krumsiek J, Arnold R, Rattei T. 2007. Gepard: a rapid and sensitive tool for creating dotplots on genome scale. *Bioinformatics.* 23(8): 1026–1028.
- Liu YY, Zhang ZJ, Jiang SF, Wang DL, Gui LJ. 2020. The chloroplast genome of *Archontophoenix alexandrae* (Arecaceae): an important landscape tree for the subtropics. *Mitochondrial DNA B Resour.* 5(1): 746–747.
- Mariac C, Blanc O, Zekraoui L. 1970. High molecular weight DNA extraction from plant nuclei isolation optimized for long-read sequencing. *Protocols.io*
- Mariac C, Scarcelli N, Pouzadou J, Barnaud A, Billot C, Faye A, Kougbadjo A, Maillol V, Martin G, Sabot F, et al. 2014. Cost-effective enrichment hybridization capture of chloroplast genomes at deep multiplexing levels for population genetics and phylogeography studies. *Mol Ecol Resour.* 14(6):1103–1113.
- Montúfar R, Rosas J. 2013. Chontaduro, Chontilla. In: R. Valencia, R. Montúfar, H. Navarrete, H. Balslev, editors. *Bactris gasipaes*. Palmeras ecuatorianas: biología y uso sostenible. Quito: Publicaciones del Herbario QCA, Pontificia Universidad Católica del Ecuador.
- Rajesh MK, Gangaraj KP, Prabhudas SK, Prasad TSK. 2020. The complete chloroplast genome data of *Areca catechu* (Arecaceae). *Data Brief.* 33: 106444.
- Rodrigues DP, Astolfi Filho S, Clement CR. 2005. Molecular marker-mediated validation of morphologically defined landraces of Pejibaye (*Bactris gasipaes*) and their phylogenetic relationships. *Genet Resour Crop Evol.* 51(8):871–882. doi:10.1007/s10722-005-0774-2.
- Santos da Silva R, Clement CR, Balsanelli E, Baura VA de, Souza EM de, Fraga HP de F, Vieira L do N. 2021. The plastome sequence of *Bactris gasipaes* and evolutionary analysis in tribe Co-coseae (Arecaceae). *PLOS ONE* 16: e0256373. doi:10.1371/journal.pone.0256373
- Shi L, Chen H, Jiang M, Wang L, Wu X, Huang L, Liu C. 2019. CPGAVAS2, an integrated plastome sequence annotator and analyzer. *Nucleic Acids Res.* 47(W1):W65–W73.
- Stamatakis A. 2015. Using RAxML to infer phylogenies. *Curr Protoc Bioinform.* 51(1):6–14.
- Uthapaisanwong P, Chanprasert J, Shearman JR, Sangsrakru D, Yoocha T, Jomchai N, Jantasuriyarat C, Tragoonrun S, Tangphatsornruang S. 2012. Characterization of the chloroplast genome sequence of oil palm (*Elaeis guineensis* Jacq.). *Gene.* 500(2):172–180.
- Wood DE, Lu J, Langmead B. 2019. Improved metagenomic analysis with Kraken 2. *Genome Biol.* 20(1):1–13.
- Zheng S, Poczai P, Hyvönen J, Tang J, Amirousetfi A. 2020. Chloroplot: an online program for the versatile plotting of organelle genomes. *Front Genet.* 11:1123.