



**HAL**  
open science

## **The South Pacific Ocean Time series (SPOT) station : first focus on the diazotrophs community**

Isabelle Biegala, Jérôme Aucan, A Desnues, Martine Rodier, Cécile Dupouy, P Raimbault, Pascal Douillet, B Hunt, Marc Pagano, A Clavere-Graciette, et al.

### ► **To cite this version:**

Isabelle Biegala, Jérôme Aucan, A Desnues, Martine Rodier, Cécile Dupouy, et al.. The South Pacific Ocean Time series (SPOT) station : first focus on the diazotrophs community. ASLO-14, Mar 2014, Honolulu, United States. ird-03759292

**HAL Id: ird-03759292**

**<https://ird.hal.science/ird-03759292>**

Submitted on 24 Aug 2022

**HAL** is a multi-disciplinary open access archive for the deposit and dissemination of scientific research documents, whether they are published or not. The documents may come from teaching and research institutions in France or abroad, or from public or private research centers.

L'archive ouverte pluridisciplinaire **HAL**, est destinée au dépôt et à la diffusion de documents scientifiques de niveau recherche, publiés ou non, émanant des établissements d'enseignement et de recherche français ou étrangers, des laboratoires publics ou privés.



# THE SOUTH PACIFIC OCEAN TIME SERIES (SPOT) STATION: A FIRST FOCUS ON DIAZOTROPHS COMMUNITY



isabelle.biegala@univ-amu.fr

I.C. Biegala<sup>1</sup>, J. Aucan<sup>2</sup>, A. Desnues<sup>3</sup>, M. Rodier<sup>4</sup>, C. Dupouy<sup>1</sup>, P. Raimbault<sup>1</sup>, P. Douillet<sup>1</sup>, B. Hunt<sup>1</sup>, M. Pagano<sup>1</sup>, A. Clavere-Graciette<sup>1</sup>, A. Bonnefous<sup>1</sup>, M. Roumagnac<sup>1</sup>, J. Gasol<sup>6</sup>, M. Periot<sup>1</sup>, O. Schenkels<sup>1</sup>, P. Sharma<sup>1</sup>, J. Harlay<sup>5</sup>, G. Eldin<sup>2</sup>, S. Cravatte<sup>2</sup>, F. Marin<sup>2</sup>, D. Varillon<sup>3</sup>, F. Roubaud<sup>3</sup>, L. Jamet<sup>3</sup>, P. Gérard<sup>3</sup>, A. Goyaud<sup>3</sup>, H. Legrand<sup>3</sup>, Y. Gouriou<sup>3</sup>, A. Ganachaud<sup>2</sup>

<sup>1</sup> Aix Marseille Université, CNRS/INSU, IRD, Mediterranean Institute of Oceanography (MIO), UM 110, 13288 Marseille, FRANCE; et Centre IRD de Nouméa NEW CALEDONIA <sup>2</sup> Laboratoire d'Etudes en Géophysique et Océanographie Spatiale, UMR5566 UPS/IRD/CNRS/CNES, Observatoire Midi-Pyrénées, Toulouse, France, et Centre IRD de Nouméa NEW CALEDONIA <sup>3</sup> IRD, Unité de Service US-191 IMAGO Instrumentation, Moyens Analytiques, Observatoires en Géophysique et Océanographie Centre IRD de Bretagne, Centre IRD de Nouméa NEW CALEDONIA Technopole Pointe du Diable, B.P. 70, 29280 PLOUZANE, France, et Centre IRD de Nouméa NEW CALEDONIA <sup>4</sup> IRD - UMR 241 EIO (Ecosystèmes Insulaires Océaniques), Tahiti - French Polynesia <sup>5</sup> Chemical Oceanography Unit, UNIVERSITY OF LIEGE, Belgium <sup>6</sup> Biología marina i Oceanografia, Institut de Ciències del Mar- CMIMA, CSIC, Barcelona, Spain.

## INTRODUCTION

Nowadays it is difficult to predict the impact of global changes, such as the expansion of highly stratified oceanic gyre, on the functioning of our ecosystems without knowing plankton biodiversity, the metabolic rates of these species and their trophic relationships.

To predict planktonic changes we need to know from the different Plankton Functional Types (PFT) that have been identified (Le Quéré et al. 2005, Falkowski et al. 2008) « how many of who? is doing what? » and these PFT need to be investigated over large distance and long periods of time, with the help of oceanographic cruises and long term observation programs.

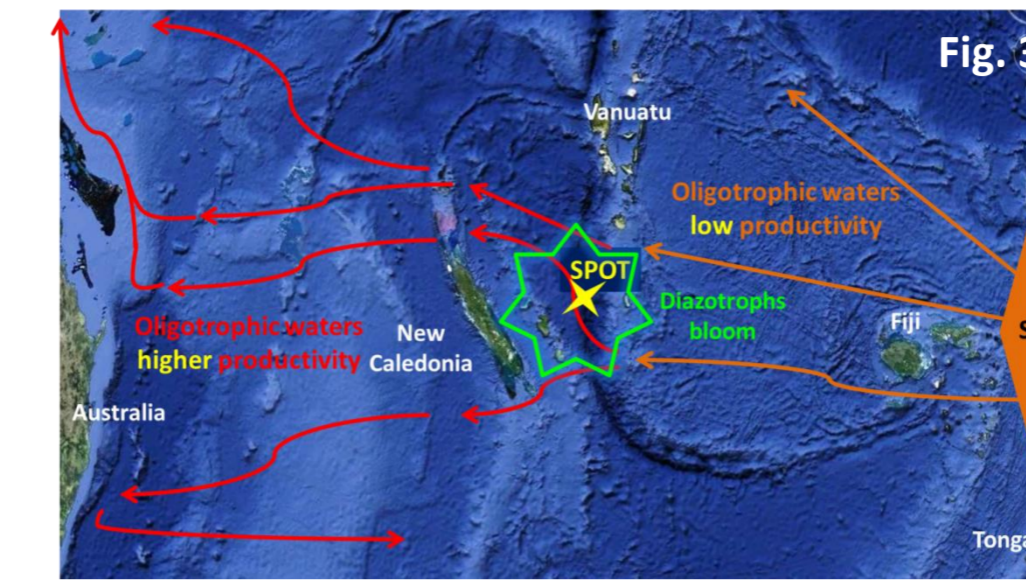
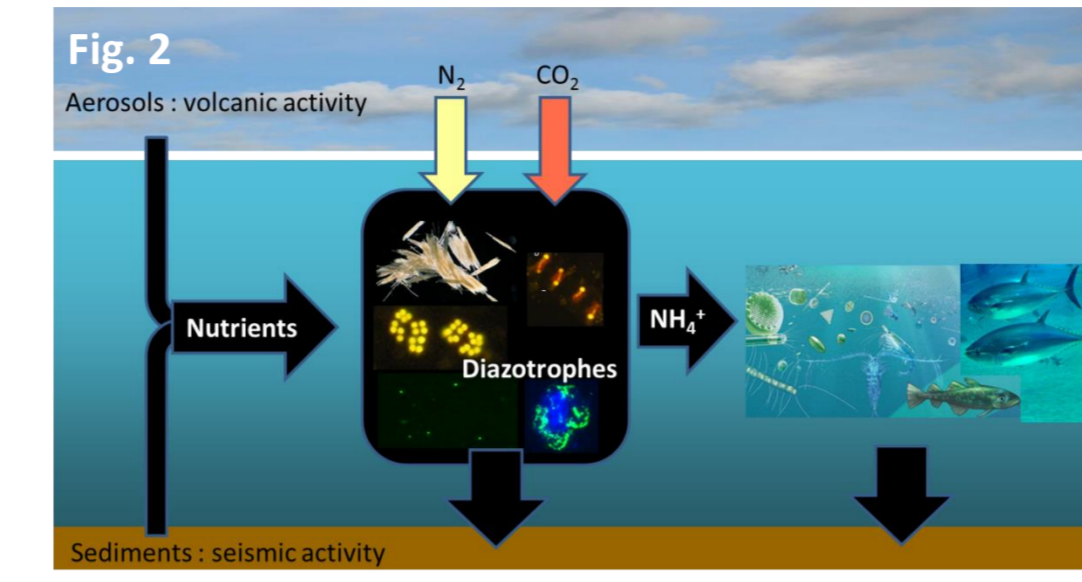
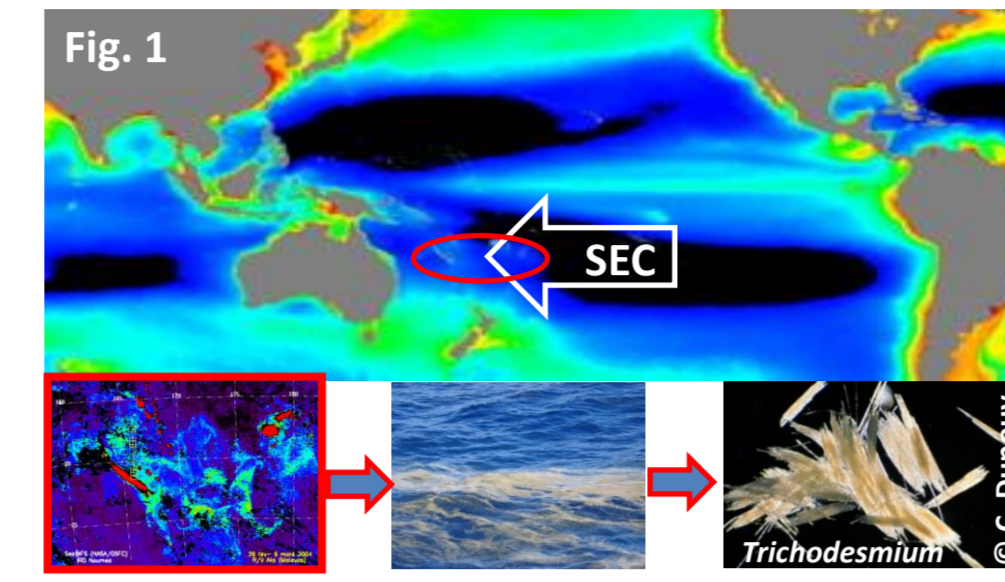
► However, long lasting ocean time series are rare and are mainly based in the Northern hemisphere, when the South West Pacific is the least known area in terms of plankton diversity.

New Caledonia oceanic region is located between tropical (warm and fresher) and sub-tropical (colder and saltier) water masses on the way of the deep (1000 m) South Equatorial Current (SEC, Ganachaud et al. 2013). The SEC is originated from the South Pacific Gyre in the French Polynesia region and it is part of El Niño-Southern Oscillation (ENSO). Changes on SEC properties will impact strongly the South-West Pacific climate and ecosystems up to Australia, going through the Coral Sea and the different ecosystems found on its way (Fiji, Tonga, Vanuatu and New Caledonia, Fig. 1 and 2).

Since several decades, researchers (Dandonneau 1986, Dupouy et al. 2011 and references therein) have observed, spectacular seasonal blooms of the PFT *N<sub>2</sub>-fixers Trichodesmium* with interannual fluctuations which are not explained yet.

*N<sub>2</sub>-fixers* have an ecological advantage compared to other phytoplankton PFTs they have a high degree of autonomy towards C and N requirements. They can as well stimulate the productivity of other bacteria, phytoplankton and zooplankton PFTs, through the (i) release of *NH<sub>4</sub><sup>+</sup>* during *N<sub>2</sub>-fixation*, (ii) their population growth and decay.

In addition of *Trichodesmium* many nano- and picoplanktonic *N<sub>2</sub>-fixers* cyanobacteria have been detected in the South-West Pacific (Biegala and Raimbault 2008, Bonnet et al. 2009, Moisaner et al. 2010, Fig. 3) which can contribute significantly to *N<sub>2</sub>-fixation* and the rise of plankton productivity of the different ecosystems on the way of the SEC current.



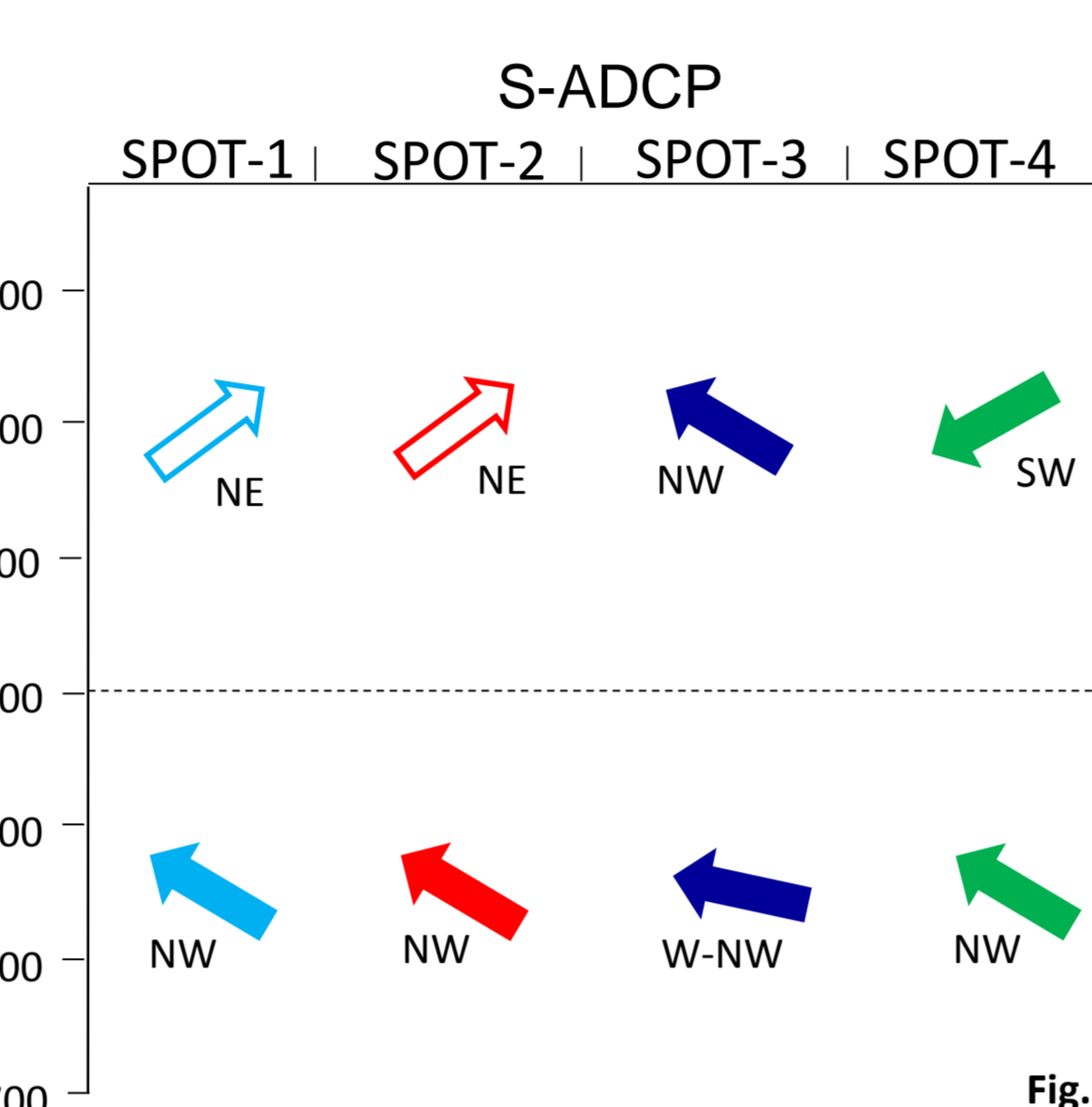
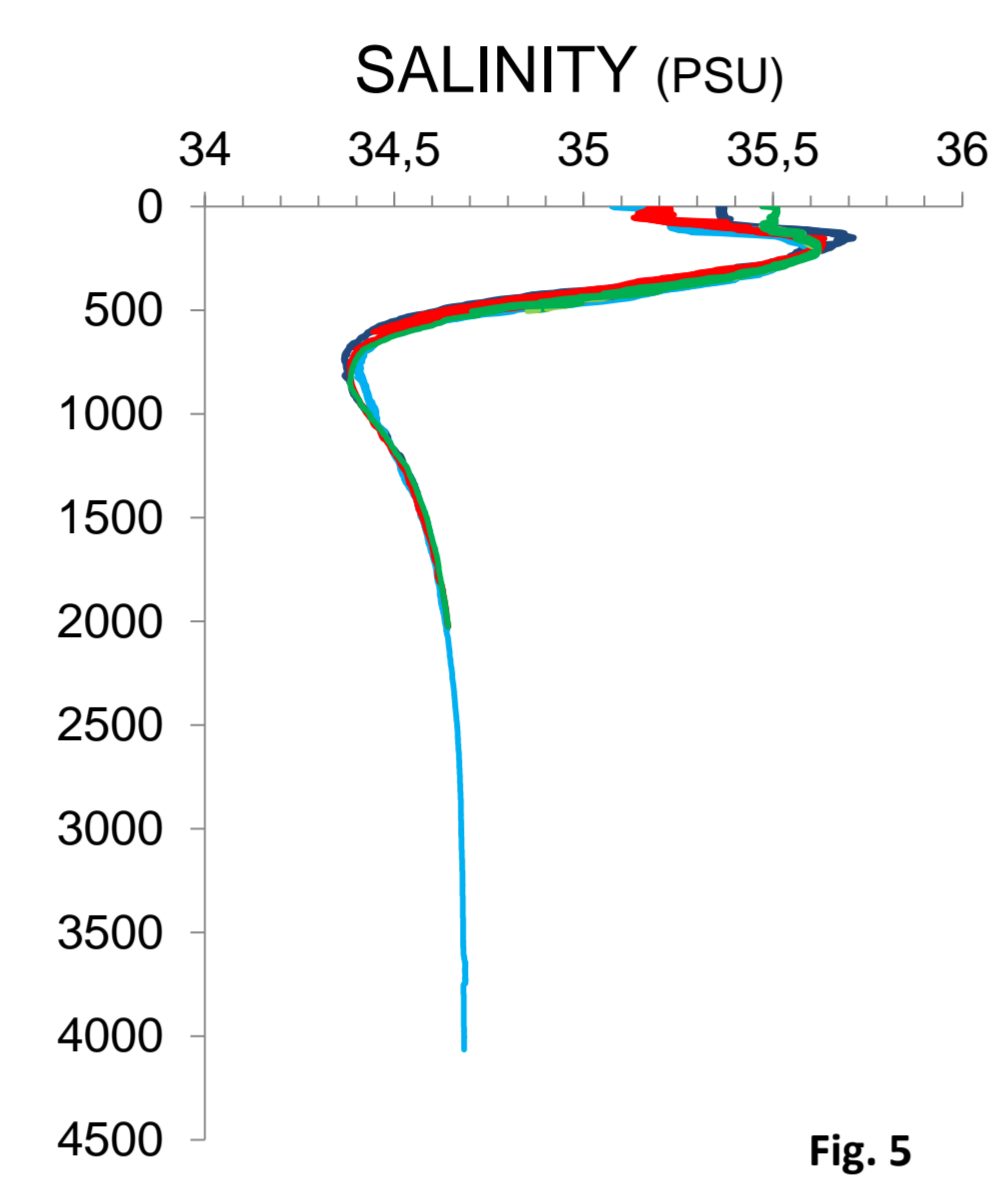
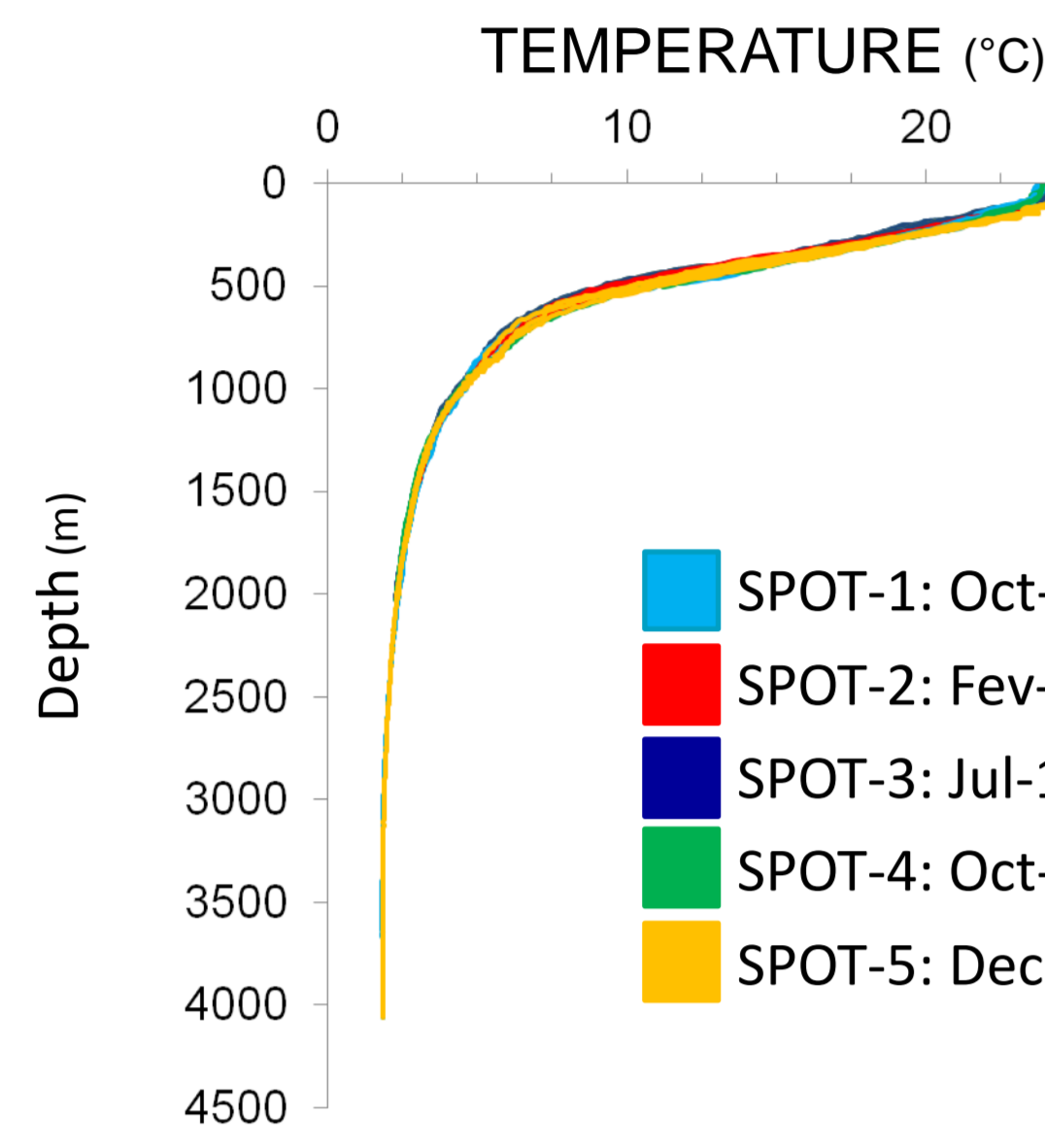
## AIMS

The SPOT station (168°E-20°S, -4500 m) is a recent deep-sea and multidisciplinary marine research observation station which objective is the establishment of the first long time series of basic parameters in the South West Pacific.

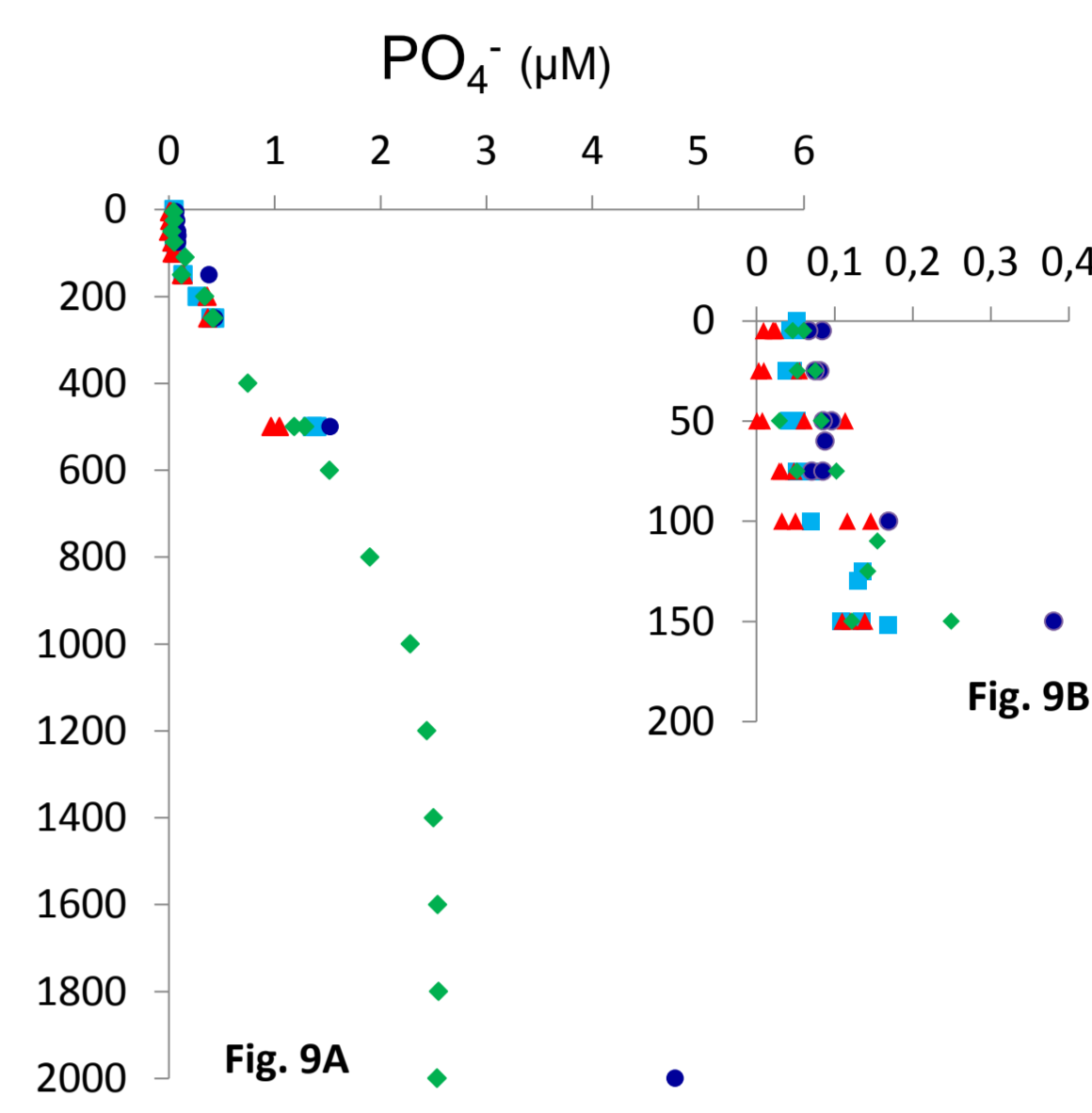
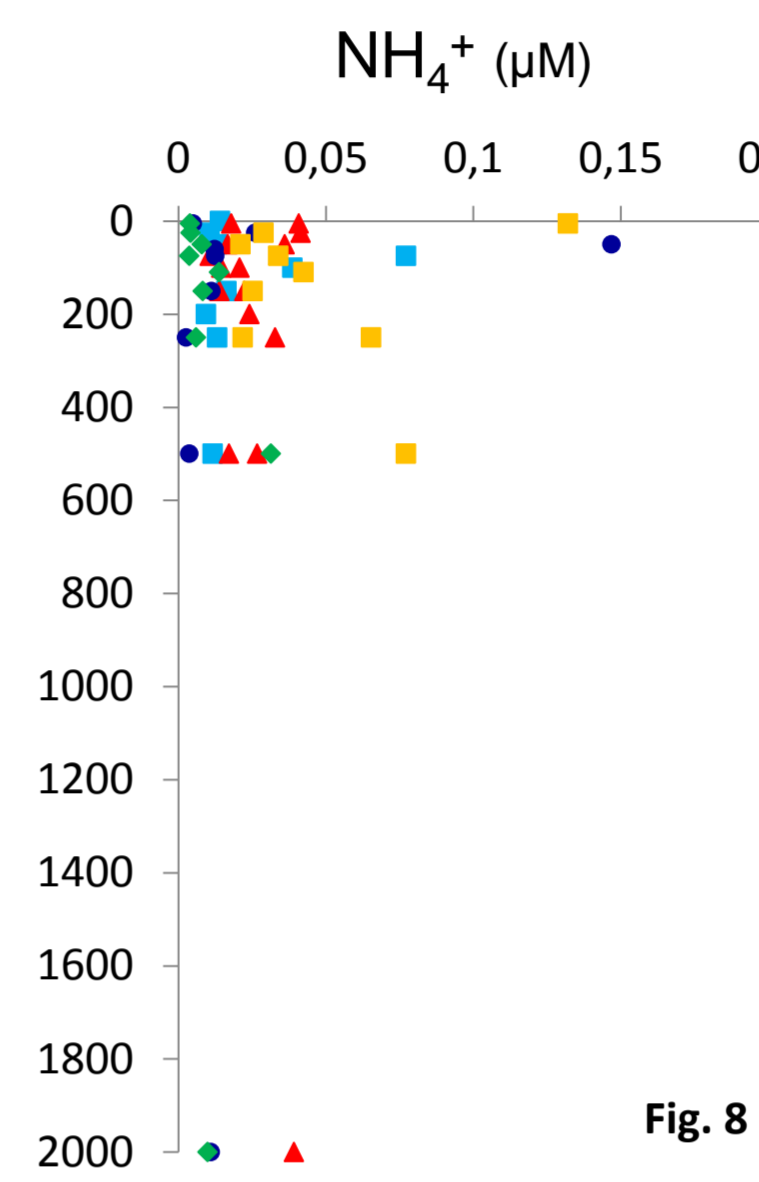
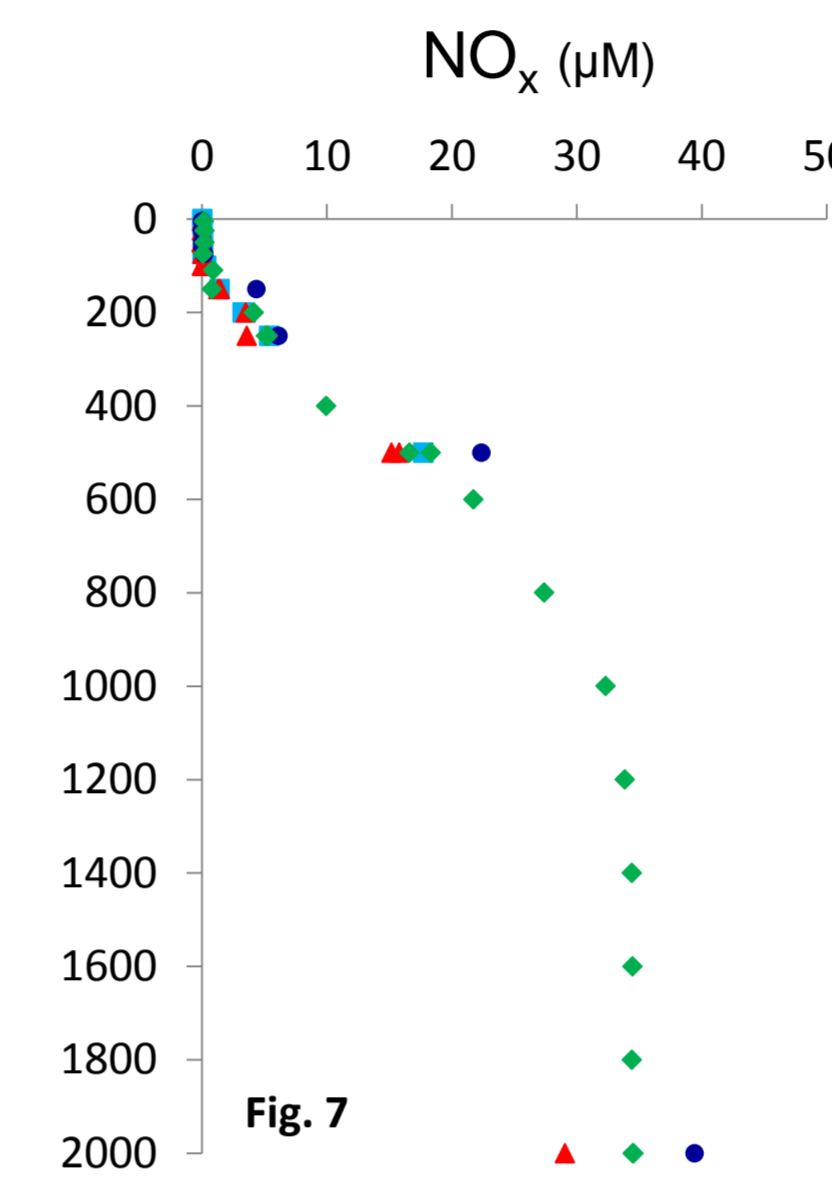
The main studies concerns the biodiversity, the productivity of key Plankton Functional Types, the biogeochemistry of carbon and nitrogen cycles, and their impact on the reef and coastal ecosystems productivity.

SPOT station is based on the same philosophy of long-lasting observation as HOT (Hawaii Ocean Time-series) and the data will be used to describe and understand the seasonal and long-term variations of the South-West Pacific ecosystem related to ENSO (El Niño Southern Oscillation).

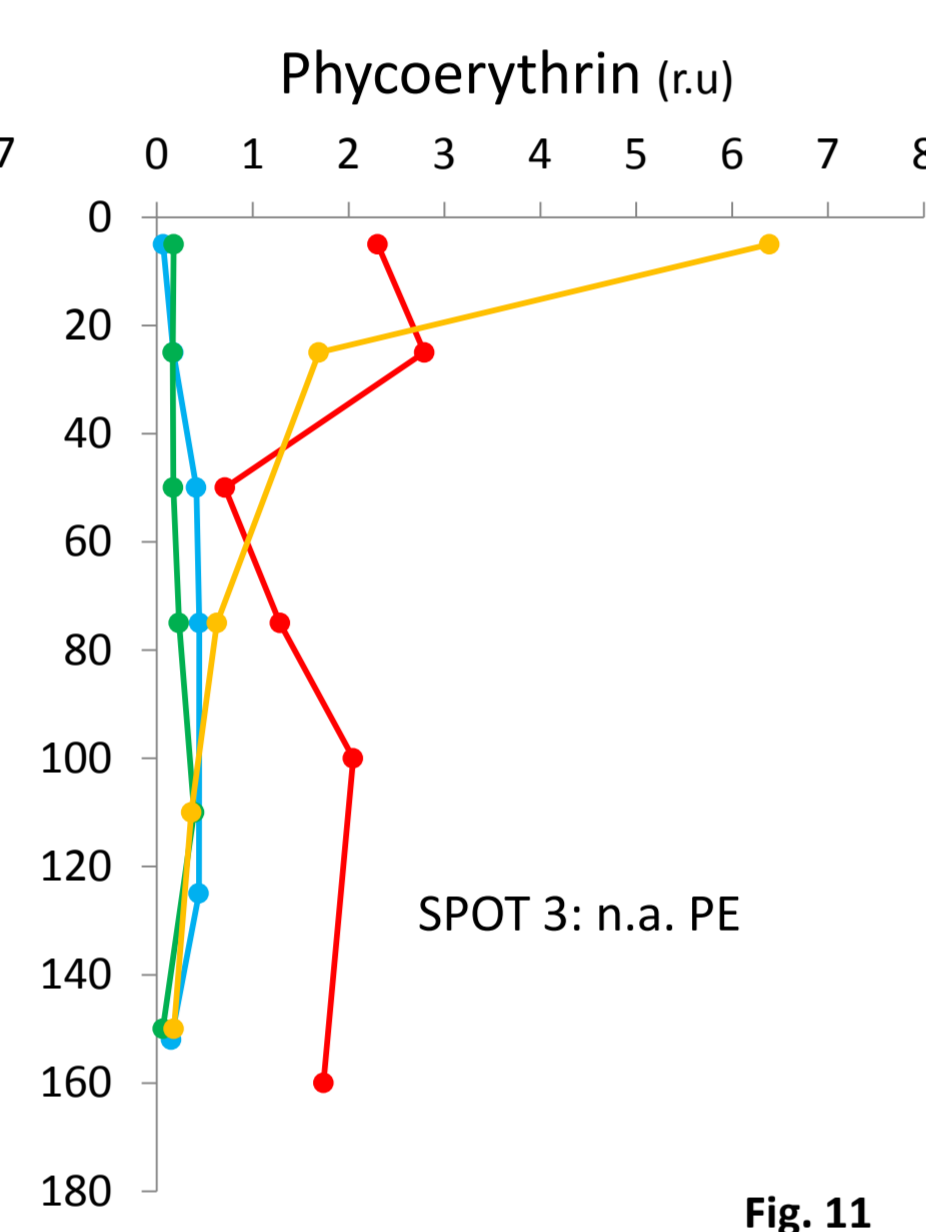
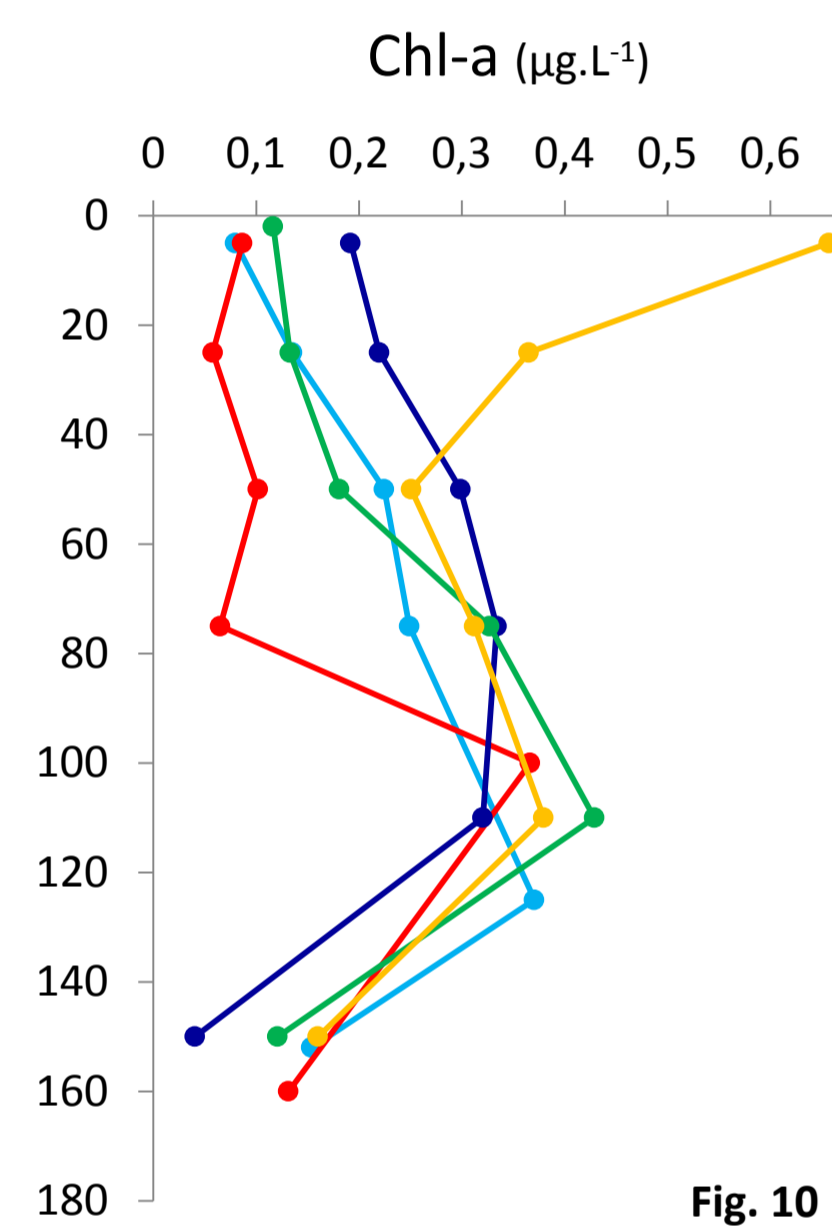
## PHYSICS



## CHEMISTRY



## PHYTOPLANKTON



## RESULTS & DISCUSSIONS

**PHYSIQUE:** Water masses at SPOT comes essentially from the SEC current orientated west (Fig. 6). Changes of orientation on surface water during SPOT-1 and 2 (Fig. 4 and 5) were from eddies formation on SEC current (AVISO Sea Level Anomalies, data not shown).

**CHEMISTRY:** Nutrients such as *NO<sub>x</sub>*, *NH<sub>4</sub><sup>+</sup>* and *PO<sub>4</sub><sup>3-</sup>* were typical of oligotrophic waters in the first 100 m and increased below the deep chlorophyll-a maximum (DCM = 100-130 m) to reach their maximum concentration at 1000 m and remained constant down to 2000 m (Fig. 7, 8, 9A). Among all the cruises the « winter » one (SPOT-3) had slightly higher concentrations of ammonium and phosphate in surface waters (Fig. 8, 9B). In winter, *NO<sub>x</sub>* and phosphate below the DCM 150 m were also the highest.

**PHYTOPLANKTON:** During all the SPOT cruises a maximum of Chl-a concentration and Phycoerythrin was reached between 80-130m (DCM), apart from SPOT-5 where the maximum was measured in surface waters (Fig. 10). The extent of Chl-a concentration in surface between New-Caledonia and Vanuatu waters was shown by satellite images (Fig. 12A-E) and counts of diazotrophic cyanobacteria community was done by microscopy down to 4000 or 2000 m (Fig. 13, 14).

The seasonal changes in surface phytoplankton biomass is explained by the variations in *Trichodesmium* sp. concentrations as revealed by Phycoerythrin measurements (Fig. 11) and microscopic counts (Fig. 14). Although the summer phytoplankton bloom was formerly attributed to *Trichodesmium*, the winter one was attributed to other eukaryotic species, october months being known as an « interseason » in terms of surface Chl-a biomass (Dupouy et al. 2011). In this study we confirmed that *Trichodesmium* sp. was also present during the winter 2013 bloom (Fig. 13C). This result is surprising and more data should be acquired on the eukaryotic phytoplanktonic community to fully characterise this bloom. It is important to stress that this winter Chl-a bloom occurred in surface every year within the last 11 years of observations, when the summer bloom was only detected six times over the same period (Dupouy et al. 2011). An important richness in *Trichodesmium* sp. was found all the year long even in low concentrations (Fig. 13E) and these filamentous cyanobacteria were observed in deep waters, up to 2000 m, during interseason cruises (Fig. 13B, 13D), which suggest cell sedimentation.

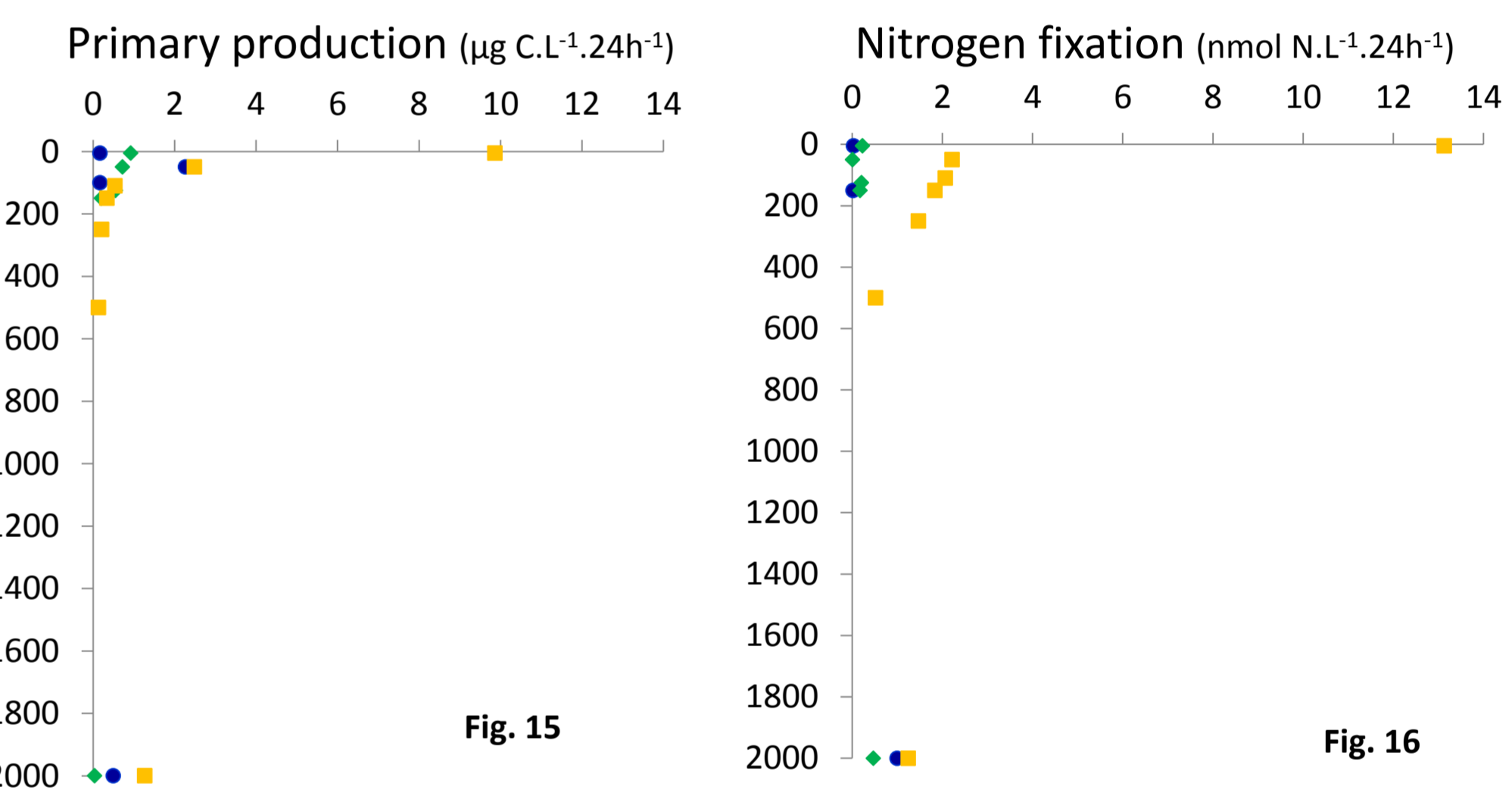
Overall the diazotrophic cyanobacterial community was largely dominated in abundance by small unicellular cells recovered within three size fractions (Fig. 14), although the picoplanktonic fraction was by far the most abundant and reached during interseason more than 300 cell.mL<sup>-1</sup> in surface waters (Fig. 14D). Similarly as *Trichodesmium* a large range of cell size/shape was recovered within the UCYN community (Fig. 14E). For the first time the vertical distribution of this UCYN community was investigated well below the euphotic zone down to 2000 and 4000 m and surprisingly some of the highest concentrations of picoplanktonic-unicellular cyanobacteria was detected below 500 m. Although the precise identity of these tiny cells is not yet known they could be attributed to UCYN-A, which are deprived of photosystem II (Zehr et al. 2008) and may be heterotrophic cyanobacteria, however a significant population of pigmented picocyanobacteria was detected by flow cytometry at these deep depths (data not shown), whose identity remained to be confirmed.

As UCYN community concentrations were obtained by fluorescent ribosomal stains (FISH technique, Biegala and Raimbault, 2008), all cells were active at time of sampling. This might not be the case for deep *Trichodesmium* concentration which physiological state remained to be characterised as their concentrations were obtained by DNA stain (DAP).

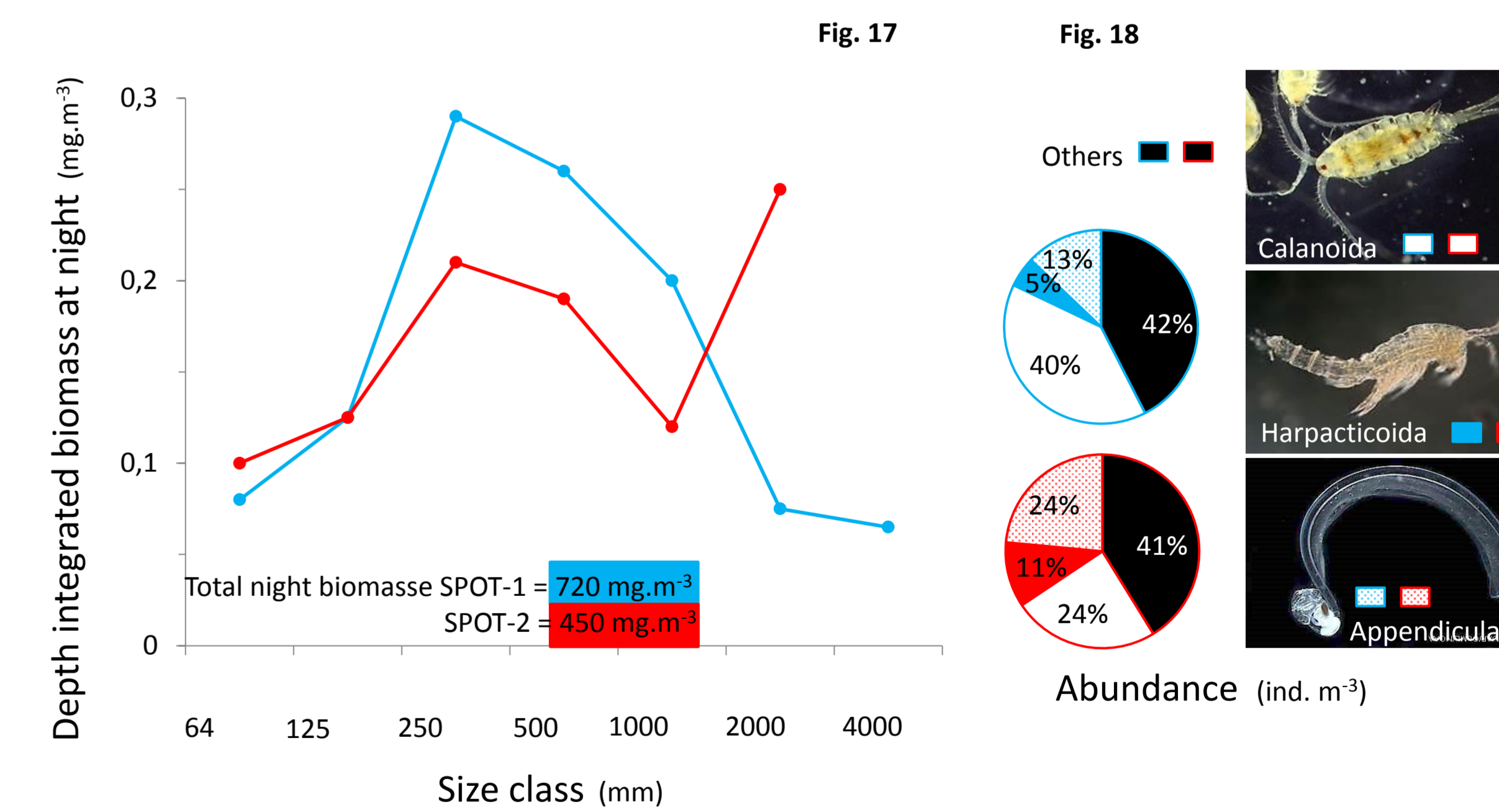
**METABOLIC RATES:** Primary production and nitrogen fixation (Montoya et al. 1996 modified according to Grosskopf et al. 2012) in surface waters increased significantly from winter (SPOT-3) to summer (SPOT-5) according to phycoerythrin riched phytoplankton biomass and diazotrophic cyanobacterial counts (Fig. 11, 14C-D, 15, 16).

However what was unexpected was the simultaneous carbon and nitrogen fixation at 2000 m, which may be related to the picoplanktonic UCYN simultaneously discovered (Fig. 14A-D, 15, 16). It is important to specify that great care was taken to maintain incubation bottles for C and N fixations in complete darkness and measurements were done in triplicates and show similar trends (data not shown).

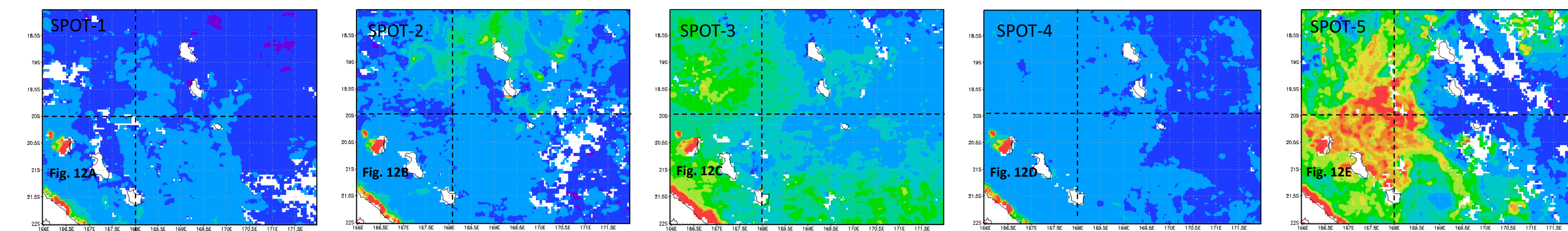
## METABOLIC RATES



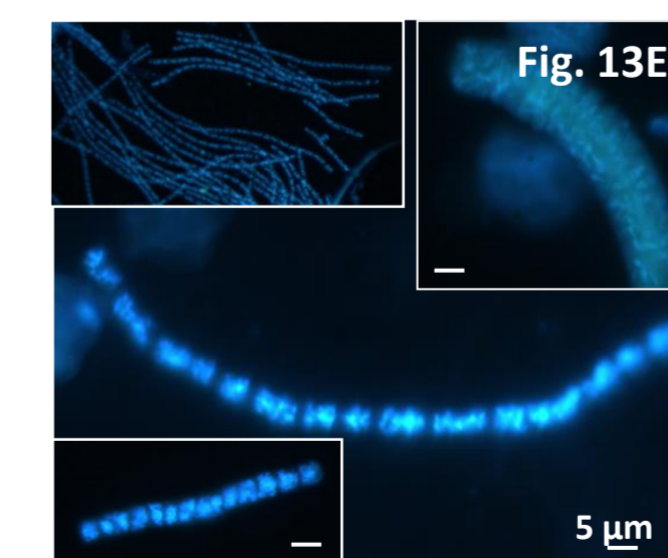
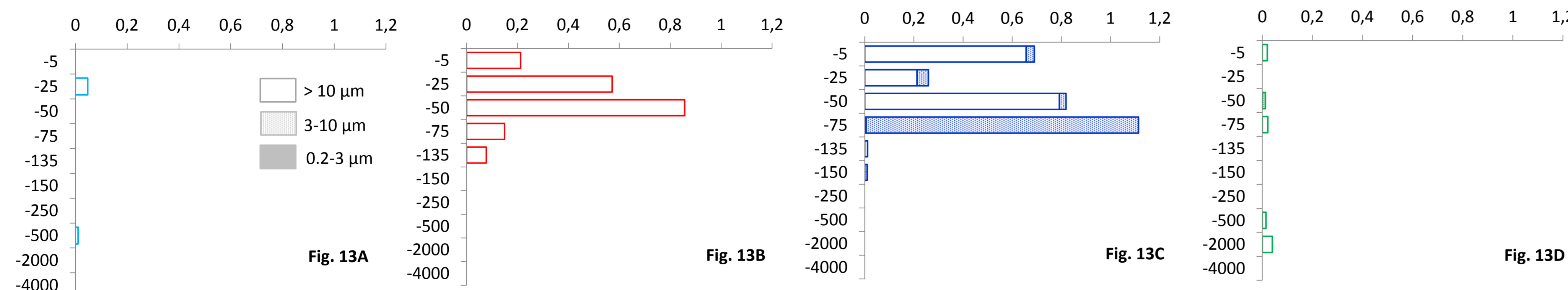
## ZOOPLANKTON



## MODIS-Satellite Chl-a concentration, 4 km (µg.m<sup>-3</sup>)

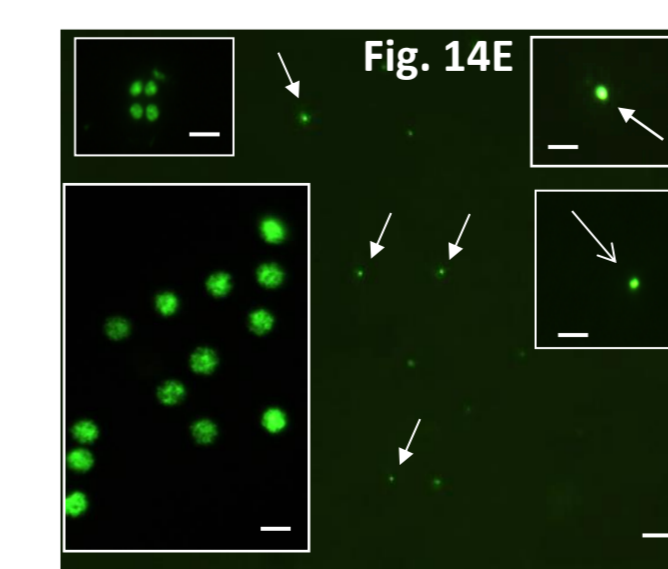
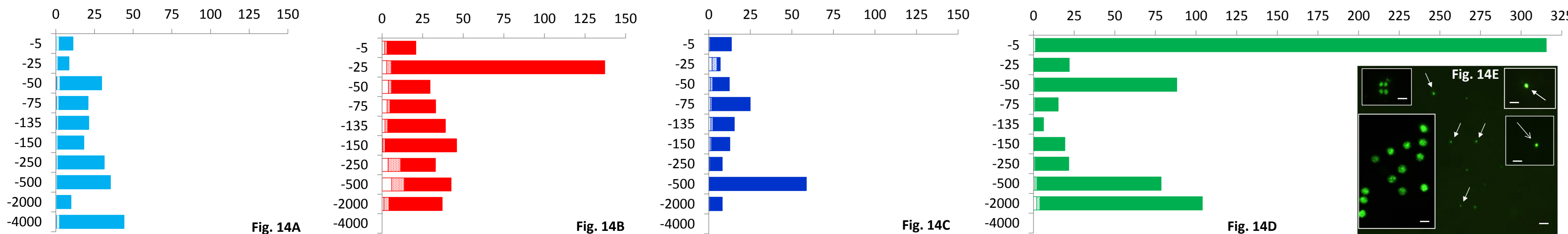


## Trichodesmium sp. concentrations (trichome.L<sup>-1</sup>)



Note that the counts are not available for SPOT-5 yet.

## UCYN concentrations (cell.mL<sup>-1</sup>)



**ZOOPLANKTON:** Interseason at SPOT shows a zooplankton biomass 1.6 times higher than in summer (insert in Fig. 17) and both seasons were characterised by a peak in zooplankton biomass within the 250 µm mesh size. An additional peak was reached in summer within the largest size fraction. Among the zooplankton community, copepod was the dominant group (data not shown). Calanoids represented 40% of the zooplankton abundance during the interseason, while in summer they reduced by half to the benefit of harpacticoid copepods and appendicularia, which both doubled their population (Fig. 18). Calanoid copepods are herbivorous and fed mainly on non-diazotrophic nanoeukaryotic phytoplankton from the DCM, when appendicularian feed on picoplanktonic cells and detritus and the planktonic harpacticoids are so far the only known predator of *Trichodesmium* sp. Although more data should be acquired on each SPOT cruises, our results suggest that surface *Trichodesmium* bloom can sustain a non negligible secondary production by enhancing the shift in species composition and inducing the development of larger organisms.

## CONCLUSIONS

The compilation of the results of this first year multidisciplinary study at SPOT station confirmed our hypothesis that while being on the way of the oligotrophic SEC current a significant and highly diverse community of diazotrophic cyanobacteria developed all the year long with seasonal shift among species and groups. In addition we show that this community is active in terms of C and N fixations and seems to sustain in summer time higher trophic level production.

We also made significant discovery of very deep population of picoplanktonic diazotrophic cyanobacteria which activity in both N and C fixations are suggested and remain to be confirmed.

REFERENCES:  
Biegala and Raimbault, 2008. High abundance of diazotrophic picocyanobacteria (3 µm) in a Southwest Pacific Coral Lagoon. *AGU* 51: 45-53.  
Bainnet et al. 2009. Nitrogen fixation in the western equatorial Pacific: rates, diazotrophic cyanobacterial size class distribution and biogeochemical significance. *Global Change Biology* 15: 1186-1196.  
Dandonneau Y. 1986. Monitoring the sea surface chlorophyll concentration in the tropical Pacific: consequences of the 1982-83 El Niño. *Prog. Fish. Cult.*, 48 (3): 187-195.  
Dupouy et al. 2011. An algorithm for detecting Trichodesmium surface blooms in the South West Pacific. *Biogeosciences* 8: 3633-3647.  
Falkowski et al. 2008. The microbial engines that drive Earth's biogeochemical cycles. *Science* 320: 1034-1039.  
Ganachaud et al. 2013. Advances from Southwest Pacific Ocean Circulation and Climate Experiments. *CSMAR Newsletter Exchanges* 61:16-23.  
Grosskopf et al. 2012. Doubling of marine diazotrophic fixation rates based on direct measurements. *Nature* 488:361-363.  
Le Quéré et al. 2005. Ecosystem dynamics based on plankton functional types for global ocean biogeochemistry models. *Global Change Biology* 11: 2016-2040.  
Moisaner et al. 2010. Unicellular cyanobacterial distribution broadens the oceanic N<sub>2</sub> fixation domain. *Science* 328: 1116-1119.  
Montoya et al. 1996. A simple, high-precision, high-sensitivity tracer assay for N<sub>2</sub> fixation. *AGU* 62:986-993.  
Zehr et al. 2008. Globally distributed unicellular oceanic N<sub>2</sub> fixing cyanobacteria lack oxygenic photosystem II. *Science* 322: 1110-1112.  
Acknowledgements: We thank all the crew of the RV ALIS as well as the NASA's Giovanni-4 MODIS Online Visualization and Analysis System\*