



**HAL**  
open science

## Does natural selection explain the fine scale genetic structure at the nuclear exon Glu-5' in blue mussels from Kerguelen ?

K Gerard, C Roby, N Bierne, Philippe Borsa, J.-P Féral, A. Chenuil

### ► To cite this version:

K Gerard, C Roby, N Bierne, Philippe Borsa, J.-P Féral, et al.. Does natural selection explain the fine scale genetic structure at the nuclear exon Glu-5' in blue mussels from Kerguelen?. *Ecology and Evolution*, 2015, 5, pp.1456-1473. 10.1002/ece3.1421 . ird-01366543

**HAL Id: ird-01366543**

**<https://ird.hal.science/ird-01366543>**

Submitted on 14 Sep 2016

**HAL** is a multi-disciplinary open access archive for the deposit and dissemination of scientific research documents, whether they are published or not. The documents may come from teaching and research institutions in France or abroad, or from public or private research centers.

L'archive ouverte pluridisciplinaire **HAL**, est destinée au dépôt et à la diffusion de documents scientifiques de niveau recherche, publiés ou non, émanant des établissements d'enseignement et de recherche français ou étrangers, des laboratoires publics ou privés.

To be cited as:

Gerard K, Roby C, Bierne N, Borsa P, Feral J-P, Chenuil A 2015. – Does natural selection explain the fine scale genetic structure at the nuclear exon *Glu-5'* in blue mussels from Kerguelen? *Ecology and Evolution* 5, 1456-1473.

## **Does natural selection explain the fine scale genetic structure at the nuclear exon *Glu-5'* in blue mussels from Kerguelen?**

K. Gerard,<sup>1</sup> C. Roby,<sup>1</sup> N. Bierne,<sup>2</sup> P. Borsa,<sup>3</sup> J.-P. Féral,<sup>1,4</sup> and A. Chenuil<sup>1,4</sup>

<sup>1</sup> Institut Méditerranéen de Biodiversité et d'Ecologie marine et continentale - CNRS UMR 7263, Aix-Marseille Université, Station marine d'Endoume, 13007 Marseille, France

<sup>2</sup> ISEM - CNRS UMR 5554, Station méditerranéenne de l'environnement littoral, 34200 Sète, France

<sup>3</sup> Institut de recherche pour le développement, UR227, Montpellier, France

<sup>4</sup> CNRS UMR 6540 – DIMAR, Centre d'océanologie de Marseille, Station marine d'Endoume, 13007 Marseille, France

*Keywords:* F-statistics, *mac-1*, local adaptive differentiation, neutral structure, AMOVA, environment.

Correspondence: Karin Gerard, E-mail: [gerardkarin@yahoo.fr](mailto:gerardkarin@yahoo.fr); Fax: +33 4 91 04 16 14; Phone: +33 4 91 04 16 17

Running title: Genetic structure in Kerguelen blue mussels

## Abstract

The Kerguelen archipelago, isolated in the Southern Ocean, shelters a blue mussel *Mytilus* metapopulation far from any influence of continental populations or any known hybrid zone. The finely carved coast leads to a highly heterogeneous habitat. We investigated the impact of the environment on the genetic structure in those Kerguelen blue mussels by relating allele frequencies to habitat descriptors. A total sample comprising up to 2248 individuals from 35 locations was characterized using two nuclear markers, *mac-1* and *Glu-5'*, and a mitochondrial marker (*COI*). The frequency data from 9 allozyme loci in 9 of these locations were also reanalysed. Two other nuclear markers (*EFbis* and *EFpre*'s) were monomorphic. Compared to Northern-Hemisphere populations, polymorphism in Kerguelen blue mussels was lower for all markers except for the exon *Glu-5'*. At *Glu-5'*, genetic differences were observed between samples from distinct regions ( $F_{CT}=0.077$ ), as well as within two regions, including between samples separated by less than 500 meters. No significant differentiation was observed in the AMOVA analyses at the two other markers (*mac-1* and *COI*). Like *mac-1*, all allozyme loci genotyped in a previous publication, displayed lower differentiation (Jost's D) and  $F_{ST}$  values than *Glu-5'*. Power simulations and confidence intervals support that *Glu-5'* displays significantly higher differentiation than the other loci (except a single allozyme for which confidence intervals overlap). AMOVA analyses revealed significant effects of the giant kelp *Macrocystis* and wave exposure on this marker. We discuss the influence of hydrological conditions on the genetic differentiation among regions. In marine organisms with high fecundity and high dispersal potential, gene flow tends to erase differentiation, but this study showed significant differentiation at very small distance. This may be explained by the particular hydrology and the carved coastline of the Kerguelen archipelago, together with spatially variable selection at *Glu-5'*.

## Introduction

In marine benthic organisms, a long planktonic larval stage generally allows gene flow between remote populations and consequently neutral genetic differentiation increases only slightly with geographical distance (Launey *et al.* 2002). Physical isolation (e.g. large distances, oceanic fronts, gyres) enhances genetic differences among populations. Differentiation may also arise locally through adaptation to localized environmental conditions (Maynard Smith 1966; Barton & Hewitt 1985). However, detecting adaptation through natural selection is difficult mainly because gene flow counters its effects at each generation (Kawecki & Ebert 2004; Sanford & Kelly 2011). Also large variance in reproductive success (see Hedgecock's sweepstake reproduction hypothesis: Hedgecock 1994; Hedgecock and Pudovkin 2011) can generate transient chaotic patterns of genetic structure, known as "chaotic genetic patchiness" (Johnson and Black 1984, Broquet *et al.* 2013) ) that sometimes resembles local adaptation. Differentiation between neighbouring populations may be initiated by localized spatial heterogeneity in the environment such as hydrological characteristics (currents, exposition to wave action, salinity, temperature) or a complex topography (coastal shape, depth). Under conditions of fine-grained environmental heterogeneity, genetic differentiation at a selected locus may be higher between populations that differ environmentally even over short distances, than at other loci (Kawecki & Ebert 2004; Gagnaire *et al.* 2012).

The present work takes place in the Kerguelen archipelago, isolated in the Southern Indian Ocean 4100 km southeast of South Africa and 4000 km west of Australia. The Kerguelen plateau is an obstacle to the eastward flow of the Antarctic Circumpolar Current and creates a large wake zone where water masses strongly mix (Park *et al.* 2008a; Park *et al.* 2008b). The cold Superficial Antarctic Waters reach the west coast of the archipelago and separate into two parts drifting along south- and northward (Murail *et al.* 1977; Edgar 1987; Blain *et al.* 2001). The morphology of the Kerguelen Archipelago is the result of the volcanic activity combined with glacial erosion that led to a carved coast with protected bays and fjords, and a large enclosed bay with particular environmental conditions, the Gulf of Morbihan. In the very coastal perimeter, the salinity decreases drastically due to the important hydrographical network, and decreases even stronger in the shallow waters of the gulf, or deep inside the bays and fjords like at the *Fjord des Portes Noires* and the *Fjord Henri Bossière* (Figure 1) (Arnaud 1974; Murail *et al.* 1977). This archipelago is also characterized by a high level of endemism (Briggs 1966; McDowall 1968; Poulin & Féral 1995; Hennion & Walton 1997; Brandt *et al.* 1999; Frenot *et al.* 2001; Emerson 2002). Given the discrete geographical nature (Emerson 2002) and spatial heterogeneity of the environment, Kerguelen Islands seem particularly suited to investigate the association of the environment and the population differentiation in a marine species with a long planktonic larval stage (thereby a putatively high dispersal potential), such as smooth-shelled *Mytilus* (L.) mussels.

The blue mussels from Kerguelen are mainly distributed in the intertidal zone from 0 to 2 m depth (Arnaud 1971; Arnaud 1974), where the environmental conditions are the most variable. Kerguelen blue mussels have been described as *M. desolationis* (Lamy, 1936). However, their current taxonomic status, determined from morphology, allozymes, and nuclear and mitochondrial DNA sequences is *M. edulis platensis*, the Southern-Hemisphere subspecies of *M. edulis* L. (McDonald *et al.* 1991; Borsa *et al.* 2012). Genetic differentiation between smooth-shelled *Mytilus* spp. mussels (*M. edulis* L., *M. galloprovincialis* Lmk., *M. trossulus* Gould) and the phylogeography of these species has been studied extensively (e.g. McDonald *et al.* 1991; Sanjuan *et al.* 1997; Daguin 2000; Daguin & Borsa 2000; Hilbish *et al.*

2000; Gérard *et al.* 2008), with particular focus on areas of hybridization (Skibinski *et al.* 1978; Skibinski 1983; Väinölä & Hvilsom 1991; Viard *et al.* 1994; Gardner 1996; Bierne *et al.* 2002a; Bierne *et al.* 2002b; Bierne *et al.* 2003). The most famous example of genetic differentiation linked to the environment in blue mussels is the gradient at the *lap* locus correlated with salinity gradient along the eastern coast of North America (Koehn 1978). The physiological and selective roles of the *lap* locus have been highlighted (Hilbish *et al.* 1982; Hilbish & Koehn 1985a, b) and further studied in blue mussels from Kerguelen (Blot *et al.* 1989) and New Zealand (Gardner & Kathiravetpillai 1997; Gardner & Palmer 1998). In Kerguelen blue mussels, genetic differences between populations were apparent at three (*lap*, *pgm*, *pgd*) allozyme loci (Blot *et al.* 1989), and the structure reported to be related to salinity, wave exposure and, to a lesser extent, to the maximum shell length (as a proxy of fitness). However, no statistical analyses were conducted to support this conclusion. Theoretically, genetic differentiation may be due to physical barriers to gene flow but also to local adaptation under selective constraints (Williams 1966; Kawecki & Ebert 2004; Perrin *et al.* 2004). In cases of barriers to gene flow, the differentiation will affect a majority of loci, whereas in cases of local adaptation only a few loci are concerned.

To determine whether the genetic polymorphism of the blue mussel population of Kerguelen is driven by neutral and/or adaptive forces, we (i) investigated the influence of the water circulation around Kerguelen, first on the total genetic structure and second within differentiated groups and (ii) tested the influence of the habitat type at a smaller scale. To fill in these objectives, we used two nuclear markers polymorphic in Kerguelen blue mussels: *Glu-5'* (Inoue *et al.* 1995; Rawson *et al.* 1996) and *mac-1* (Ohresser *et al.* 1997), and we also considered the sequence polymorphism at the mitochondrial DNA locus *COI* (Gérard *et al.* 2008). We tested the polymorphism at *EFbis* (Bierne *et al.* 2002a) and *EFprem's* (this study), two introns of the elongation factor 1 alpha gene, which are physically linked. We collected blue mussel samples from all around the Kerguelen Archipelago, from contrasted habitats roughly described by five qualitative environmental variables. At a finer grid, a dense network of sites in the complex of islands of the Gulf of Morbihan, were sampled to explore the distribution of the allele frequencies, taking into account the environmental changes over short distances.

## Material and methods

### *Sampling*

Blue mussel samples were collected between 1999 and 2003 from 35 sites in the Kerguelen Archipelago (Fig. 1). Sample size ranged from 27 to 130 individuals (Table 1). Five samples came from the north coast (PCh, PMt, PCx, I3B, AJ), two from the east coast (PMo, RdA), twenty-two from the Gulf of Morbihan (PAF, PR1, PR2, IH, IM, IGn, PF, BOCRD, BOCentre, BOCRG, BO100am, BO200am, BO100av, BO200av, BOCAB, BOFF, Ar1, Ar2, HdS, PJDA, PB, IS), six from the south coast (BdS, BM, FPN, BM) and one from the west coast (PCu). Pieces of mantle tissue were preserved in 95% ethanol. DNA was extracted using Chelex100<sup>®</sup> chelating resin (Walsh *et al.* 1991).

### *Molecular markers*

The locus *Glu-5'* (Inoue *et al.* 1995; Rawson *et al.* 1996) is located at the 5' extremity of exon *Glu* coding for an adhesive foot protein (Waite 1992). This locus contains an insertion/deletion (indel) zone, whose amplification reveals three alleles: (*T*, *E* and *G*) that respectively distinguish *M. trossulus*, *M. edulis* and *M. galloprovincialis* in the Northern Hemisphere (Borsa *et al.* 1999). The locus *mac-1* is the first intron of the *Mytilus* actin protein (Ohresser *et al.* 1997). Among the 49 size-alleles described in the entire range of *Mytilus* spp., 22 alleles occur in the Southern Hemisphere, 8 of which have not yet been sampled in the Northern Hemisphere (Daguin & Borsa 2000). The four alleles encountered in the Kerguelen blue mussel population in Kerguelen are all shared with Northern-Hemisphere populations (Daguin & Borsa 2000; Borsa *et al.* 2007). The polymorphism at locus *EFbis* has been tested in one location in Kerguelen (Mayes Island in the Gulf of Morbihan) and was low, with two alleles detected (160: frequency 0.01; 161: 0.99) (Daguin 2000). We scored locus *EFbis* in other samples from around the archipelago. A new EPIC marker (*EFprem's*) in the second intron of *EF1 $\alpha$*  was also scored. Both *EFbis* and *EFprem's* loci showed sample monomorphism (see Results). Table S1 summarizes primer names, sequences and annealing temperatures required for the amplification of the nuclear DNA loci. The genotypes at *Glu-5'* and *mac-1* were determined from fragment-length variation on, respectively 2% and 3% agarose gels. The amplification of the *Glu-5'* exon by primers *Me-15* and *Me-17* produced 210-bp (allele *E*) and 160-bp (allele *G*) fragments, typical of, respectively *M. edulis* and *M. galloprovincialis* from the Northern Hemisphere (Fig. 2A). At locus *mac-1*, fragments of 400 and 370-bp were revealed. According to Daguin (2000) and Borsa *et al.* (2007), the 400-bp fragment at locus *mac-1* corresponds to allele *a4*, whereas the 370-bp fragment corresponds to either allele *a2* or *a3*, which differ from one another by one base pair and cannot be distinguished on agarose gels (Fig. 2B). Consequently, the 370-bp fragment is here noted '*a*'. The denomination of *COI* haplotypes (KERF1 to KERF16) follows Gérard *et al.* (2008).

### Genetic analysis

Heterozygosity was estimated by Nei's (1978) non-biased heterozygosity index ( $H_{n.b}$ ).  $F_{IS}$  and  $F_{ST}$  values were estimated according to Weir & Cockerham (1984) using the FSTAT procedure in the program GENETIX 4.02 (Belkhir *et al.* 2000). The significance of  $F_{IS}$  (and respectively  $F_{ST}$ ) values was assessed after 5000 permutations of alleles (resp. individuals) within (resp. between) samples, thus obtaining the distribution of  $F_{IS}$  (resp.  $F_{ST}$ ) pseudo-values under the null hypothesis of panmixia (resp. a non-structured population). The probability ( $P$ ) values associated to  $F_{IS}$  or  $F_{ST}$  estimates was the proportion of pseudo-values generated by 5000 random permutations larger than, or equal to the observed value. Mantel tests were used to assess the correlation of pairwise  $F_{ST}$  values and geographical distances (by coastal line) between samples computing the association statistics  $Z$  (Mantel 1967). The  $P$ -value of  $Z$  was the proportion of pseudo-values generated by permutations under the null hypothesis of independence of genetic and geographical distances, larger than, or equal to the observed value of  $Z$ . Mantel tests and permutations were computed by the program GENETIX 4.02.

The False Discovery Rate correction for multiple comparisons was used to adjust levels of statistical significance (Benjamini & Hochberg 1995).

Analyses of molecular variance (AMOVA ; Excoffier *et al.* 1992) were done on *Glu-5'* and *mac-1* genotype data, as well as on *COI* sequences (conventional  $F_{ST}$  based on frequencies) for comparative purposes using ARLEQUIN 3.0

(Excoffier *et al.* 2005). Following the results of pairwise  $F_{ST}$  (see results), we defined and tested a geographical structure of three groups based on the origin of the samples (North + East, Gulf, South + West; Table 1). In the AMOVA grouping, the unique sample from the west coast (PCu) was lumped with the South group, from which it was not differentiated (see pairwise  $F_{ST}$  results). The exact test of sample differentiation (Raymond & Rousset 1995) was run (with 20,000 Markov chain, 1000 dememorization steps) using this same software based on mitochondrial haplotype frequency in the three groups. So-called “neutrality tests” (Fu’s  $F$  and Tajima’s  $D$ ) were run to check whether the double hypothesis of demographic stability and selective neutrality of the *COI* marker could be rejected.

We reanalysed gene frequency data of nine allozyme loci published in Blot (1989) and Blot *et al.* (1989). Genotypes were not available but we could compute  $F_{ST}$  from gene frequency data using the relationship  $F_{ST} = 1 - H_o / H_e$ , the exact tests of differentiation based on Jost’s differentiations (see below and Table 2), and the contingency tables of the numbers of each allele in each population (Table S2).

Two approaches were used to compare differentiation levels among markers or data sets with contrasted samples sizes and polymorphism levels. (1) Jost’s differentiation  $D$  parameters and confidence intervals were computed using the program SPADE (Jost 2008; Chao & Chen 2010). This was done for the common subset of seven populations which were analysed in the present study (for *Glu-5'* and *mac-1*), in Blot (1989) and Blot *et al.* (1989) for nine allozyme markers. The interest in this approach is that Jost’s  $D$  is much less affected by polymorphism level than  $F_{ST}$  and provides confidence intervals. (2) The Powsim application (Ryman & Palm 2006) was used to compare results among markers which did not display similar sample sizes and allele frequency distributions. This application uses simulated data sets corresponding to a model of diverging populations (no migration): a given  $F_{ST}$  level is chosen by the user, by selecting an appropriate pair of values for effective size and divergence time (in number of generations). We thus checked whether the small sample sizes or the reduced polymorphism for the *COI* and *mac-1* data sets respectively, relative to those of *Glu-5'* may affect our results in the finding of significant differentiation among regions. The simulations were run at the differentiation level found with the *Glu-5'* genotypic data (we used a value similar to both the overall  $F_{ST}$  among all populations and the global  $F_{CT}$  among regions), using the global frequency distributions of *COI* haplotypes and *mac-1* alleles and their respective sample sizes in the three groups of populations (North + East, Gulf, South + West). The output of the program provides the proportion of cases in which significant differentiation is found.

A median-joining parsimony network (Bandelt *et al.* 1999) of *COI* haplotypes was built using NETWORK 4.1.0.7 (available at [www.fluxus-technology.com/](http://www.fluxus-technology.com/)).

### *Environmental factors*

The habitat at each sampling site was described by five qualitative variables: (1) Substrate (rock, blocks, gravels, sand); (2) Wave Exposure (sheltered, exposed); (3) Slope (flat, steep, hangover); (4) Salinity (oceanic, influenced by freshwater); (5) *Macrocystis* (presence, absence). The Region (North, South, Gulf, and West) was also considered as a factor in the following statistical analyses. Correlation among environmental factors and frequency of allele *G* was assessed by pairwise Spearman’s  $\rho$  values (Spearman 1904).

We also used AMOVAs on *Glu-5'* and *mac-1* genotypic data and *COI* haplotype data, within each geographical region. For each environmental factor, we grouped samples according to the modality of the factor in order to test the effects of environment within regions ( $F_{CT}$ ,  $V_a$ ), within groups independently of the effects of population differentiation between regions. The AMOVA, although it is restricted to investigate nested factors, has two important advantages over parametric analyses (ANCOVAs were performed using the proportion of the *G* allele at *Glu-5'* as the variable to explain, but not shown): (i) it does not rely upon statistical conditions on the distribution of the data, since the P-value is assessed via permutations (Excoffier *et al.* 2005), and (ii) it takes into account the statistically important information of the number of individuals in each population.

## Results

### *Polymorphism*

The number of individuals characterized was 2248, 1511 and 83 for *Glu-5'*, *mac-1*, and *COI* (Table 3), respectively, and 20 for each *EFbis* and *EFprem's*.

We detected no polymorphism at loci *EFbis* and *EFprem's* scored on agarose gels. At locus *Glu-5'*, *G* and *E* allelic frequencies were of 41.6% and 58.4% in the total sample. In the Gulf of Morbihan, the *G* allele occurred in higher frequencies, sometimes over 50% (samples PR1, IGn, Ar1, Ar2, BoCRD, Bo100am, Bo200am, BoCentre; Table 3, Fig. 3). At *mac-1*, the allele *a* had a frequency of 91.9% in the total sample. Allele *a'* had the lowest frequency in all samples (from 4% to 19.7%; Table 3, Fig. 3). Average  $H_{n.b.}$  values were of 0.453 and 0.152 respectively for *Glu-5'* and *mac-1*.  $F_{IS}$  values at the two nuclear loci were generally non-significantly from 0 (Table 3), except for for the sample IH (northern part of the Gulf) which shows a heterozygote excess ( $F_{IS} = -0.186$ ;  $P = 0.0362$ ) but this significance level did not pass, by far, the correction for multiple tests. At locus *COI*, 16 haplotypes were found, haplotype diversity was about  $H_{n.b.} = 0.86$  within region (it was not computed within population due to a small sample sizes). Neutrality tests (Tajima's *D* and Fu's *F<sub>s</sub>*) within each region were non-significant and the haplotype network appeared balanced (Fig. 4).

### *Differentiation among populations*

Overall  $F_{ST}$  values at both nuclear DNA loci were significant (*Glu-5'*:  $F_{ST} = 0.0627 \pm 0.0176$ ,  $P \leq 0.0001$ ; *mac-1*:  $F_{ST} = 0.00945 \pm 0.00592$ ;  $P \leq 0.004$ ) establishing the presence of significant genetic structure for these loci in Kerguelen. By contrast, the exact test of global differentiation at the *COI* locus did not appear significant ( $P = 0.59856 \pm 0.08481$ ), and the single non-negative estimate of  $F_{ST}$  value among regions (pooling individuals from different populations) was 0.007 (NS).

At *Glu-5'*, pairwise  $F_{ST}$  values revealed a differentiation between samples depending on the region to which they belong. Three groups of genetically differentiated samples may be identified (Table 1 and 3): (1) the northern group presented the highest frequencies of the *E* allele, (2) the Gulf group presented the highest frequencies of the *G* allele; (3) the southern group was intermediate. The unique sample from the west coast (PCu) was less differentiated from



the southern group than from the northern group and the Gulf. At locus *Glu-5'* after the FDR correction, only *P*-values lower than 0.021 subsisted, mainly those concerning pairwise  $F_{ST}$  between samples from the North coast and the Gulf of Morbihan. At locus *mac-1*, fewer pairwise  $F_{ST}$  values were significant (Table 4). However, the samples RdA (East Coast) and PR2 (Gulf) are significantly differentiated from the majority of the other samples, due to the high frequency of allele *c4* (17 and 19.4%, respectively). Only PR2 remained differentiated from the remaining samples after FDR correction.

#### *AMOVAs among regions*

The differentiation between the three groups of samples (1: North + East coasts, 2: Gulf, 3: South + West coasts) was significant at *Glu-5'* ( $F_{CT}$ : 0.0773;  $P < 0.000001$ ), but neither at locus *mac-1* ( $F_{CT}$ : -0.0003;  $P = 0.394$ ), nor at *COI*. ( $F_{CT}$ : -0.01244,  $P = 0.67$ ).

#### *Within-region differentiation*

Genetic structure was also evidenced within the three groups of samples genetically differentiated at *Glu-5'* (North, Gulf, South). In the northern group, sample AJ was significantly differentiated to all other northern samples (due to its higher frequency of allele *G* at *Glu-5'*). In this group, the sample RdA was also differentiated from all northern samples (except I3B) and had the highest frequency of allele *E* of the whole data set. In the Gulf group, the sample Ar1 was differentiated from all samples of the Gulf except BoCentre, Bo100am and IGn. Consequently, a significant differentiation was highlighted between samples separated by no more than 500 m: Ar1 and Ar2. At locus *mac-1*, similarly, samples PR1 and PR2 appeared differentiated but only before FDR correction (Fig. 1, Table 4).

At the scale of the archipelago, no correlation was detected between genetic differentiation and genetic distance, at any locus. Except along the north coast, at locus *Glu-5'*, samples PCh to RdA (from north-west to east) ( $P \leq 0.04$ ).

#### *Confidence intervals of differentiations and power analyses*

Jost's *D* values were computed for a set of seven populations from the North, Gulf and the South regions, for *Glu-5'*, *mac-1* and nine allozymes. The maximum value ( $D = 0.049$ ) was obtained at *Glu-5'*, and its confidence interval only overlapped that of the enzyme *PGD* ( $D = 0.032$ ) which also appeared particularly differentiated (Table 2).  $F_{ST}$  values were all lower than those at *Glu-5'*. Additionally whereas Jost's *D* confidence intervals of all loci except *Glu-5'* and *PGD* included 0.000, the *P*-values of the exact tests of overall differentiation were generally significant or highly significant (Table S2).

For *mac-1* and *COI*, we used Powsim to simulate three populations with sample sizes and global allele frequencies corresponding to the three regions for these markers with an  $F_{ST}$  of 0.07 because *Glu-5'* displayed an overall  $F_{ST}$  of 0.067 in Kerguelen, and a  $F_{CT}$  of 0.077 in the AMOVA with regional groups. This value of  $F_{ST}$  was obtained by simulating a fission of three populations of  $N_e = 1000$  each, that occurred 145 generations ago, parameters which allowed maintaining the observed polymorphism after 145 generations. Sample sizes corresponded to samples sizes

for *mac-1* and *COI* in each region: 181, 725, 195 and 27, 19, 37, respectively. The allele frequencies used were 0.919 and 0.081 for *mac-1*, and 0.012, 0.012, 0.012, 0.012, 0.012, 0.012, 0.012, 0.012, 0.012, 0.012, 0.100, 0.144, 0.170, 0.060, 0.130, and 0.276, for *COI* simulations.

Powsim simulations indicated that an overall  $F_{ST}$  of 0.07 would generate significant differences in more than 99.5 % of the cases for the *COI* data set and in more than 92.9 % of the cases for the *mac-1* data set. When there is polymorphism within populations the maximum value of fixation indices such as  $F_{ST}$  does not reach one even when no allele is shared among populations (Jost 2008; Meirmans & Hedrick 2011). *Glu-5'* and *mac-1* both have only two alleles, thus when comparing only two populations,  $F_{ST}$  values can in theory reach one and the level of intra-population diversity should not affect the range of possible  $F_{ST}$  values. For *COI* however, the maximum possible value of  $F_{ST}$  was higher than at *Glu-5'*, thus a given  $F_{ST}$  value corresponds to less differentiation in *Glu-5'* than in *COI* (Jost 2008; Meirmans & Hedrick 2011). Thus, the value of 99.5 % of significant  $F_{ST}$  given by Powsim for *COI* is an overestimate.

#### *Statistical analyses with environmental variables.*

For each environmental variable, the genetic differentiation between samples grouped by category was assessed by pairwise  $F_{ST}$  for each nuclear marker (Table 5). None was significant at *mac-1* but many were significant at *Glu-5'*. For the variable "Substrate", samples collected on rocks, blocks, gravels or sand were not significantly differentiated between each other. Regarding "Slope", only samples collected on flat shores and hangovers were differentiated ( $P \leq 0.0001$ ) but steep shore samples appeared significantly differentiated neither from flat nor from hangover locations. For the three remaining factors "Macrocytis", "Wave exposure" and "Salinity" the samples grouped by category were highly differentiated ( $P \leq 0.0001$ ). Concerning the variable "Region", the single western sample was differentiated from northern samples only ( $P \leq 0.004$ ).

At *Glu-5'*, AMOVAs realized at the scale of the archipelago for each environmental variable, grouping the 35 samples by categories (Table 5) revealed a significant differentiation between the presence and absence of *Macrocytis* ( $F_{CT}$ : 0.0239,  $P = 0.00684$ ). The groupings were not significantly differentiated, neither for the other factors (at *Glu-5'*), nor at *mac-1* and *COI* loci. Since we tested five environmental variables, the  $P$ -values should be corrected taking into account multiple tests. The effect of "Macrocytis" presence remains significant after correction for multiple tests.

Environmental variables "Substrate", "Wave exposure", "Slope", "Salinity" and "Macrocytis" were significantly correlated to one another, except the pair "Substrate/Macrocytis". The frequency of allele G was correlated to "Macrocytis" and "Region" only, whereas the variable "Region" was correlated to none of the other variables (Table 6).

AMOVAs by environmental variables, restricted to the 22 Gulf samples revealed a significant effect of "Wave Exposure" (accounting for 1.23% of the molecular variance between groups;  $P=0.0088$ ) and also of the presence of "Macrocytis" ( $F_{CT}=0.0125$ ,  $P = 0.0489$ ), but they did not overcome the FDR correction for 5 tests. The presence of *Macrocytis* in a population was correlated with wave exposure in the Gulf, since most populations where *Macrocytis* occur, are exposed to waves (except PR2 which is sheltered). The effect of slope was nearly significant ( $P = 0.058 \pm 0.007$ ). At locus *mac-1*, samples from the Gulf were differentiated ( $F_{CT} = 0.0168$ ,  $P = 0.0289$ ) only when grouped by "Substrate" category but this significance level did not pass the FDR correction. In the regions North (8 samples) and

South (4 samples), the environmental groupings did not reveal any significant differentiation at *Glu-5'* or *mac-1*. At locus *COI*, none of the environmental grouping of samples was significant.

## Discussion

### *Polymorphism at the three loci and possible departures from neutral expectations*

The locus *Glu-5'* has traditionally been considered as diagnostic between smooth-shell *Mytilus* species in the Northern Hemisphere (Inoue *et al.* 1995; Rawson *et al.* 1996; Borsa *et al.* 1999; Daguin & Borsa 2000; Daguin *et al.* 2001; Luttikhuisen *et al.* 2002; Gilg & Hilbish 2003a; Gilg & Hilbish 2003b; Hilbish *et al.* 2003), although low frequencies of hetero-specific alleles have been reported (Hamer *et al.* 2012). At Kerguelen, *Glu-5'* is polymorphic for hetero-specific alleles and at Hardy-Weinberg equilibrium, which was unexpected in a genetic context other than the *M. edulis*/*M. galloprovincialis* hybrid zone in the Northern Hemisphere (Borsa *et al.* 2007). Mitochondria of Kerguelen blue mussels belong to the S1 clade which is endemic to the Southern Ocean (Gérard *et al.* 2008). The Kerguelen archipelago thus shelters the only wild and stable population (*i.e.* outside a hybrid zone) of *Mytilus* known so far, whose polymorphism at *Glu-5'* is not in linkage disequilibrium with any of the typical genomes of northern *M. edulis*, *M. galloprovincialis*, or *M. trossulus*.

Unexpected genetic structure was here revealed at *Glu-5'* not only at the scale of the archipelago, but also at a much smaller geographic scale, down to a few hundred meters. There was a clear break in allelic frequency at *Glu-5'* between samples from the Gulf and the north coast. The highest frequencies of the allele *G* occurred in the western part of the Gulf, far from the influence of outer marine waters, and reached 60% near Mayes Island (Fig. 1) (Daguin 2000; Borsa *et al.* 2007).

Some of *COI* haplotypes in Kerguelen blue mussels also occur in southern South-America (Gérard *et al.* 2008). Here, we confirm the homogeneity of *COI* haplotype frequencies across the four regions of the archipelago. The shape of the haplotype network is compatible with a stable effective size of Kerguelen blue mussel population and with selective neutrality at this locus.

To summarize, in Kerguelen the polymorphism at *Glu-5'* is higher than everywhere else, whereas the polymorphism at all other nuclear loci tested (*mac-1*, *EFbis* and *EFprem's*) is lower (Bierne *et al.* 2002b; this study). The haplotype diversity at the mitochondrial locus *COI* is also lower in Kerguelen than in Patagonia (Gérard *et al.* 2008) and allozyme loci are also less polymorphic in Kerguelen than in Northern-Hemisphere populations of *M. edulis* (Blot *et al.* 1988). The smaller size of the Kerguelen metapopulation, compared to other less isolated populations worldwide, may explain its lower polymorphism (except at locus *Glu-5'*). Local adaptation appears as a plausible cause for the maintenance of alleles at balanced frequencies at *Glu-5'* in the heterogeneous environment of the Kerguelen archipelago.

*The three markers revealed distinct patterns of differentiation between samples.*

The level of differentiation are much higher at *Glu-5'* than at *mac-1*, *COI* and eight allozyme loci out of nine. One can hypothesize that allele differences at locus *mac-1* may have escaped detection because of the low resolution of agarose gels and that the power to detect possible differences at locus *COI* may have been hampered by insufficient sample sizes. However, these hypotheses were ruled out by analyses of Jost's differentiation D and their confidence intervals, as well as the Powsim analyses suggesting that *Glu-5'* was subjected to different constraints.

Thus, *Glu-5'* actually reveals highly significant genetic differentiation at all levels, among and within region, and between environments. Three possible explanations arise: (i) the power analyses might be unreliable, because Powsim uses a model of fission which may not well represent the actual situation (but Jost's differentiation and confidence intervals are not subject to such doubts); (ii) larvae may preferentially settle (by habitat choice) in certain environments according to their genotype at *Glu-5'* or other physically linked loci; (iii) mortality or fecundity may vary among locations according to genotype at *Glu-5'* or physically linked genes (*i.e.* differential selection). Marine species may be subjected to high variance of reproductive success (Hedgecock's sweepstake reproduction hypothesis) which together with collective dispersal of related individuals can generate complex patterns of genetic structure known as chaotic genetic patchiness (Broquet *et al.* 2013). A skewed offspring distribution also generates departure from the standard Kingman's coalescent and an increased heterogeneity in differentiation levels (Eldon and Wakeley 2009). *Glu-5'* therefore seems to be an outlier displaying particularly high genetic differentiation among Kerguelen populations. However, this observation alone is not sufficient to support hypotheses of natural selection. We will thus use an additional prediction that is not well explained by purely neutral processes which is an association between genetic differentiation- and environmental distance (Coop *et al.* 2010).

#### *Geographic pattern of genetic differentiation associated to ocean circulation*

Patterns of genetic differentiation among Kerguelen blue mussels from different groups (North + East, South + West, and Gulf of Morbihan) similar to those here observed revealed at locus *Glu-5'* have been previously reported at allozyme loci (Blot *et al.* 1989).

After the FDR correction for multiple tests, the most significant differentiations were observed between the North coast and the Gulf. Indeed, the frontier between these regions displays the strongest break of allelic frequencies at *Glu-5'*, located between samples RdA and PAF. This sample RdA is also differentiated from all others at *mac-1*, suggesting restricted gene flow towards the most eastern point of Kerguelen. As did Blot *et al.* (1989), we relate the restricted gene flow to the hydrology and water masses circulation around the archipelago (Murail *et al.* 1977). All samples are located in the 'Coastal Hydrological Region' which has the most changing physical parameters even at fine scale and globally a lower salinity compared to offshore oceanic waters. However, at wider scale, the south coast and northern point of the archipelago receive the same water mass coming from the west (the ACC), but they remain isolated, thus driving to a genetic differentiation among samples from these two regions. The water masses flowing along the North and South coasts only mix far offshore in the north-eastern wake zone of the archipelago (Murail *et al.* 1977). The presence of eddies retaining larvae on the shelf and then dragging them from a site to another on relatively short distance may explain the pattern of isolation by distance observed along the north coast at *Glu-5'*. Koubbi *et al.* (2000) have suggested that *Lepidonotoboten squamifrons* larvae are retained by a costal gyre in the *Golfe des*

*Baleiniers* (the open area off *Port Couvreur* (PCx), North coast), and also noted the lability of this gyre and the consequent mixing of coastal and oceanic waters during the winter period when winds are the strongest (Razouls *et al.* 1996; Koubbi *et al.* 2000). Thus, at the inter-regional scale, hydrological characteristics are able to account for the main genetic differentiation observed, by their effect on migration (i.e. without necessity to invoke selection).

#### *Very fine scale differentiation does not support selective neutrality*

In the Gulf, a particular enclosure, genetic differentiations at very fine scale were observed: between samples from the Armor locality, Ar1 and Ar2, which are separated by very short distances (500 m) considering the dispersal potential attributed to the *Mytilus* mussels. No such differentiation is observed at the locus *mac-1*. In Armor (Ar), a marked difference in habitat occurs between samples (1 and 2). Ar1 is located near an important freshwater source, where *Macrocystis* are lacking, and has higher frequency in allele *G* than its neighbour Ar2. Out of the Gulf, in FPN a comparable habitat (Fjord with freshwater source), we also observed the same trend: a higher frequency of allele *G* compared to other south-coast samples (see Table 3). This trend suggests the influence of these protected, low-salinity, sandy habitat on the blue mussels that is expressed by a higher frequency of allele *G*. However, a sample with comparable habitat shows the opposite trend: RdA has the lowest frequency of allele *G* of the whole dataset (9%; see Table 3).

#### *Genetic differentiation caused by selective pressure from environment?*

At *Glu-5'*, at the scale of the archipelago, the differentiation between groups and between categories of samples with and without *Macrocystis*, were significant. Typical habitats of protected areas with flat sandy bottoms and low-salinity waters, which are more frequent in the Gulf of Morbihan lack *Macrocystis* kelp beds. Conversely, the open coasts are mostly exposed rocky shores, bordered by *Macrocystis* beds. Consequently, searching for differentiation between samples from the Gulf and those from the South and North coasts, leads to searching the differentiation between samples located in habitats, respectively without and with *Macrocystis* kelp beds. Finally, the genetic differentiation among the three main geographic regions may mask the environmental effect (or the reciprocal) on the genetic data. Then, analysing environmental effect within group would avoid the 'regions' effect. At the within-group scale, the results were distinct, mainly due to the contrasting samplings. More precisely, the absence of significant effect of all environmental factors on *Glu-5'* data in the North and South Coasts may be due to the low number of samples (8 and 5, respectively) and/or a lower power of *Glu-5'* in these regions compared to the Gulf. In the Gulf, the  $H_{n,b}$  is the highest and both alleles have similar frequencies, thus allowing better detection of small differences. Indeed, within the Gulf, the substantial effect of presence/absence of *Macrocystis* beds on the sample differentiation was recovered, and the effect of the wave exposure was also revealed (see AMOVAs results). A significant result after the FDR correction cannot be considered an artefact of the number of AMOVAs that were done. The environmental effects found by the AMOVAs (even within the Gulf of Morbihan) do not necessarily reflect habitat choice or differential selection linked to *Glu-5'* genotypes: geographically close populations tend to share environmental characteristics even within region (for instance, the numerous samples from the *Henri Bossière* Fjord are all similar) thus if there is fine scale

structure due to any other factor, by indirect correlation, a statistical effect of environment may arise even in the absence of causal relationship.

To conclude, three independent lines of evidence suggest that *Glu-5'* is affected by selection (or habitat choice): (i) the high polymorphism at this locus in Kerguelen, (ii) highest and more significant  $F_{ST}$  and  $F_{CT}$  at *Glu-5'* compared to other loci, (iii) the significant effects of environmental factors on AMOVAs even within region. However, none is a sufficient proof of selection by itself.

## Acknowledgements

We thank the French Polar Institute (IPEV) for the logistic support. Sampling was realised during scientific program IPEV-MACROBENTHOS n°195 (1999-2003) by the technical volunteers (VATs) from IPEV missions 49 to 53 in Kerguelen, with a special thanks to Thomas Abiven. We are grateful to Erwan Bronnec for the brave navigation through the Fjord *des Portes Noires*, to Denis, Jean-Marc and the whole crew of 'La Curieuse' ship for great sampling moments in open waters of the archipelago sometimes during very bad weather, and finally to all helping peoples from the 52<sup>nd</sup>, 53<sup>rd</sup> missions in Kerguelen. Abigail E Cahill corrected the English of newly written parts of the revised version.

## References

- Arnaud P (1971) Les moulières à *Mytilus* et *Anulacomya* des îles Kerguelen (sud de l'Océan Indien). Les "moulières de seuil" et leur intérêt possible pour l'aquaculture des pélécytopodes. Comptes Rendus de l'Académie des Sciences Série 3 272, 1423-1425.
- Arnaud PM (1974) Contribution à la bionomie marine benthique des régions antarctiques et subantarctiques. Théthys 6, 465-656.
- Bandelt H-J, Forster P, Röhl A (1999) Median-Joining networks for inferring intraspecific phylogenies. Molecular Biology and Evolution 16, 37-48.
- Barton NH, Hewitt GM (1985) Analysis of hybrid zones. Annual Review of Ecology and Systematics 16, 113-148.
- Belkhir K, Borsa P, Chikhi L, Raufaste N, Bonhomme F (2000) Genetix version 4.02, logiciel sous Windows™ pour la génétique des populations. CNRS UMR 5000, Université Montpellier 2, Montpellier, 2000  
<http://www.genetix.univ-montp2.fr/genetix/>
- Benjamini Y, Hochberg Y (1995) Controlling the false discovery rate: a practical and powerful approach to multiple testing. Journal of the Royal Statistical Society Series B 57, 289-300.
- Bierne N, Borsa P, Daguin C, et al. (2003) Introgression patterns in the mosaic hybrid zone between *Mytilus edulis* and *M. galloprovincialis*. Molecular Ecology 12, 447-461.
- Bierne N, David P, Boudry P, Bonhomme F (2002a) Assortative fertilization and selection at larval stage in the mussels *Mytilus edulis* and *M. galloprovincialis*. Evolution 56, 292-298.
- Bierne N, David P, Langlade A, Bonhomme F (2002b) Can habitat specialisation maintain a mosaic hybrid zone in marine bivalves ? Marine Ecology Progress Series 245, 157-170.
- Blain S, Tréguer P, Belviso S, Bucciarelli E, Denis M, Desabre S et al. (2001) A biogeochemical study of the island mass effect in the context of the iron hypothesis: Kerguelen Islands, Southern Ocean. Deep-Sea Research II 48, 163-187.

- Blot M (1989) Les populations de Mytilidae de Kerguelen (océan austral): génétique et adaptation à l'environnement de *Mytilus desolationis*, Université Paris 7.
- Blot M, Thiriot-Quievreux C, Soyer J (1988) Genetic relationships among population of *Mytilus desolationis* from Kerguelen, *M. edulis* from the North Atlantic and *M. galloprovincialis* from the Mediterranean. Marine Ecology Progress Series 44, 239-247.
- Blot M, Thiriot-Quievreux C, Soyer J (1989) Genetic differences and environments of mussel populations in Kerguelen Islands. Polar Biology 10, 167-174.
- Borsa P, Daguin C, Bierne N (2007) Genomic reticulation indicates mixed ancestry in Southern-Hemisphere *Mytilus* spp. mussels. Biological Journal of the Linnean Society 92, 747-754.
- Borsa P, Daguin C, Ramos Caetano S, Bonhomme F (1999) Nuclear-DNA evidence that northeastern Atlantic *Mytilus trossulus* mussels carry *M. edulis* genes. Journal of Molluscan Study 35, 524-527.
- Borsa P, Rolland V, Daguin-Thiébaud C (2012) Genetics and taxonomy of Chilean smooth-shelled mussels, *Mytilus* spp. (Bivalvia: Mytilidae). Comptes Rendus Biologies 335, 51-61.
- Brandt A, Linse K, Mühlenhardt-Siegel U (1999) Biogeography of Crustacea and Mollusca of the Subantarctic and Antarctic regions. Scientia Marina 63, 383-389.
- Briggs JC (1966) Oceanic islands, endemism and marine paleotemperatures. Systematic Zoology 15, 153-163.
- Broquet T, Viard F, Yearsley J M (2013) Genetic drift and collective dispersal can result in chaotic genetic patchiness. Evolution 67, 1660-1675.
- Chao A, Shen TJ (2010) Program SPADE (Species Prediction And Diversity Estimation). Program and User's Guide published at <http://chao.stat.nthu.edu.tw>.
- Coop G, Witonsky D, Di Rienzo A, Pritchard JK (2010) Using environmental correlations to identify loci underlying local adaptation. Genetics 185, 1411-1423.
- Daguin C (2000) Phylogéographie des moules du complexe d'espèces *Mytilus edulis*, Université Montpellier II.
- Daguin C, Bonhomme F, Borsa P (2001) The zone of sympatry and hybridization of *Mytilus edulis* and *M. galloprovincialis*, as described by intron length polymorphism at locus *mac-1*. Heredity, 86, 342-354.
- Daguin C, Borsa P (1999) Genetic characterisation of the *Mytilus galloprovincialis* Lmk. in North West Africa using nuclear DNA markers. Journal of Experimental Marine Biology and Ecology, 235, 55-65.
- Daguin C, Borsa P (2000) Genetic relationships of *Mytilus galloprovincialis* Lamarck populations worldwide: evidence for nuclear DNA markers. Geological Society of London Special Publications 177, 389-397.
- Edgar GJ (1987) Dispersal of fauna and floral propagules associated with drifting *Macrocystis pyrifera* plants. Marine Biology 95, 599-610.
- Eldon B, Wakeley J (2009) Coalescence times and  $F_{ST}$  under a skewed offspring distribution among individuals in a population. Genetics 181, 615-629.
- Emerson BC (2002) Evolution on oceanic islands: molecular phylogenetic approaches to understanding pattern and process. Molecular Ecology 11, 951-966.
- Excoffier L, Laval G, Schneider S (2005) Arlequin ver. 3.0: An integrated software package for population genetics data analysis. Evolutionary Bioinformatics Online 1, 47-50.
- Excoffier L, Smouse P, Quattro J (1992) Analysis of molecular variance inferred from metric distances among DNA haplotypes: Application to human mitochondrial DNA restriction data. Genetics, 131, 479-491.
- Folmer O, Black M, Hoeh W, Lutz R, Vrijenhoek R (1994) DNA primers for amplification of mitochondrial cytochrome c oxidase subunit I from diverse metazoan invertebrates. Molecular Marine Biology and Biotechnology 3, 294-299.
- Frenot Y, Gloaguen JC, Masse L, Lebouvier M (2001) Human activities, ecosystem disturbance and plant invasions in subantarctic Crozet, Kerguelen and Amsterdam Islands Biological Conservation 101, 33-50.
- Gagnaire P-A, Normandeau E, Côté C, Hansen M, Bernatchez L (2012) The genetic consequences of spatially varying selection in the panmictic American eel (*Anguilla rostrata*). Genetics 190, 725-736.

- Gardner JPA (1996) The *Mytilus edulis* species complex in southwest England: Effects of hybridization and introgression upon interlocus associations and morphometric variation. *Marine Biology* 125, 385-399.
- Gardner JPA, Kathiravetpillai G (1997) Biochemical genetic variation at a leucine aminopeptidase (LAP) locus in blue (*Mytilus galloprovincialis*) and greenshell (*Perna canaliculus*) mussel populations along a salinity gradient. *Marine Biology* 128, 619-625.
- Gardner JPA, Palmer NL (1998) Size dependant, spatial and temporal genetic variation at a leucine aminopeptidase (LAP) locus among blue mussel (*Mytilus galloprovincialis*). *Marine Biology* 132, 275-281.
- Gérard K, Bierne N, Borsa P, Chenuil A, Féral J-P (2008) Pleistocene separation of mitochondrial lineages of *Mytilus* spp. mussels from Northern and Southern Hemispheres and strong genetic differentiation among southern populations. *Molecular Phylogenetics and Evolution* 49, 84-91.
- Gilg M, Hilbish TJ (2003a) Patterns of larval dispersal and their effect on the maintenance of a blue mussel hybrid zone in Southwestern England. *Evolution* 57, 1061-1077.
- Gilg MR, Hilbish TJ (2003b) The geography of marine larval dispersal: coupling genetics with fine-scale physical oceanography. *Ecology* 84, 2989-2998.
- Hamer B, Korlevic M, Durmisi E, Nerlovic V, Bierne N (2012) Nuclear marker Me 15-16 analyses of *Mytilus galloprovincialis* populations along the eastern Adriatic coast. *Cahiers de Biologie Marine* 53, 35-44.
- Hedgecock D (1994) Temporal and spatial genetic structure of marine animal populations in the California Current. *California Cooperative Oceanic Fisheries Investigations Reports* 35, 75-81.
- Hedgecock D, Pudovkin AI (2011) Sweepstakes reproductive success in highly fecund marine fish and shellfish: a review and commentary. *Bulletin of Marine Science* 87, 971-1002.
- Hedrick PW (2005) A standardized genetic differentiation measure. *Evolution* 59, 1633-1638.
- Hennion F, Walton DWH (1997) Seed germination of endemic species from Kerguelen phytogeographic zone. *Polar Biology* 17, 180-187.
- Hilbish TJ, Deaton LE, Koehn RK (1982) Effect of an allozyme polymorphism on regulation of cell volume. *Nature London*, 298, 688-689.
- Hilbish TJ, Koehn RK (1985a) The physiological basis of selection at the LAP locus. *Evolution* 39, 1302-1317.
- Hilbish TJ, Koehn RK (1985b) Exclusion of the role of secondary contact in an allele frequency cline in the mussel *Mytilus edulis*. *Evolution*, 39, 432-443.
- Hilbish TJ, Mullinax A, Dolven SI, et al. (2000) Origin of the antitropical distribution pattern in the marine mussels (*Mytilus* spp.): routes and timing of transequatorial migration. *Marine Biology* 136, 69-77.
- Hilbish TJ, Timmons J, Agrawal V, Schneider KR, Gilg MR (2003) Estuarine habitats protect hybrids mussels from selection. *Journal of Experimental Marine Biology and Ecology*, 292, 177-186.
- Inoue K, Waite JH, Matsuoka M, Odo S, Harayama S (1995) Interspecific variations in adhesive protein sequences of *Mytilus edulis*, *M. galloprovincialis*, and *M. trossulus*. *Biological Bulletin* 189, 370-375.
- Johnson MS, Black R (1984) Pattern beneath the chaos: the effect of recruitment on genetic patchiness in an intertidal limpet. *Evolution* 38, 1371-1383.
- Jost L (2008) GST and its relatives do not measure differentiation. *Molecular Ecology* 17, 4015-4026.
- Kawecki TJ, Ebert D (2004) Conceptual issues in local adaptation. *Ecology Letters* 7, 1225-1241.
- Koehn RK (1978) Biochemical aspects of genetic variation at the LAP locus in *Mytilus edulis*. In: *Marine organism : Genetics, Ecology and Evolution*. (eds. Battaglia B and Beardmore JA). Plénum.
- Koubbi P, Duhamel G, Hebert C (2000) Role of bay, fjord and seamount on the early life history of *Lepidonotothen squamifrons* from the Kerguelen Islands. *Polar Biology* 23, 459-465.
- Launey S, Ledu C, Boudry P, Bonhomme F, Naciri-Graven Y (2002) Geographic structure in the European flat oyster (*Ostrea edulis* L.) as revealed by microsatellite polymorphism. *Journal of Heredity* 93, 331-338.
- Luttikhuisen PC, Koolhas A, Bol A, Piersma T (2002) *Mytilus galloprovincialis*-type foot-protein-1 alleles occur at low frequency among mussels in the Dutch Wadden Sea. *Journal of Sea Research* 48, 241-245.



- Mantel N (1967) The detection of disease clustering and a generalized regression approach. *Cancer Research* 27, 209–220.
- Maynard Smith J (1966) Sympatric speciation. *American Naturalist* 100, 637-650.
- McDonald JH, Seed R, Koehn RK (1991) Allozymes and morphometric characters of three species of *Mytilus* in the Northern and Southern Hemispheres. *Marine Biology* 111, 323-333.
- McDowall RM (1968) Oceanic Islands and Endemism. *Systematic Zoology* 17, 346-350.
- Meirmans PG, Hedrick PW (2011) Assessing population structure:  $F_{ST}$  and related measures. *Molecular Ecology Resources* 11, 5-18.
- Murail JF, David P, Panouse M (1977) Hydrologie du plateau continental des îles Kerguelen. *Bulletin du Comité National Français de la Recherche Antarctique* 42, 41-64.
- Nei M (1978) Estimation of average heterozygosity and genetic distance from a small number of individuals. *Genetics* 89, 583-590.
- Ohresser M, Borsa P, Delsert C (1997) Intron-length polymorphism at the actin gene locus *mac-1*: a genetic marker for population studies in the marine mussels *Mytilus galloprovincialis* Lmk and *M. edulis* L. *Molecular marine Biology and Biotechnology* 6, 123-130.
- Park YH, Gasco N, Duhamel G (2008a) Slope currents around the Kerguelen Islands from demersal longline fishing records. *Geophysical Research Letters* 35, L09604.
- Park YH, Roquet F, Durand I, Fuda J-L (2008b) Large-scale circulation over and around the Northern Kerguelen Plateau. *Deep-Sea Research II* 55, 566-581.
- Perrin C, Wing SR, Roy MS (2004) Effects of hydrographic barriers on population genetic structure of the sea star *Coscinasterias muricata* (Echinodermata, Asteroidea) in the New Zealand fjords. *Molecular Ecology* 13, 2183-2195.
- Poulin E, Féral J-P (1995) Pattern of spatial distribution of a brood-protecting schizasterid echinoid, *Abatus cordatus*, endemic to the Kerguelen Islands. *Marine Ecology Progress Series* 118, 179-186.
- Rawson PD, Joyner KL, Meetze K, Hilbish TJ (1996) Evidence for intragenic recombination within a novel genetic marker that distinguishes mussels in the *Mytilus edulis* species complex. *Heredity* 77, 599-607.
- Raymond M, Rousset F (1995) An exact test for population differentiation. *Evolution* 49, 1280-1283.
- Razouls S, Koubbi P, Mayraud P (1996) Spatio-temporal distribution of mesozooplankton in a sub-antarctic coastal basin of the Kerguelen archipelago (Southern Indian Ocean). *Polar Biology* 16, 581-587.
- Ryman N, Palm S (2006) POWSIM: a computer program for assessing statistical power when testing for genetic differentiation. *Molecular Ecology* 6, 600-602.
- Sanford E, Kelly MW (2011) Local adaptation in marine invertebrates. *Annual Review of Marine Science*, 3, 509-535.
- Sanjuan A, Zapata C, Alvarez G (1997) Genetic differentiation in *Mytilus galloprovincialis* Lmk. throughout the world. *Ophelia* 47, 13-31.
- Skibinski DOF (1983) Natural selection in hybrid mussel populations. In: Protein polymorphisms adaptive and taxonomic significance (eds. Oxford GS, Rollinson D), pp. 283-298. Academic Press, New York.
- Skibinski DOF, Ahmad M, Beardmore JA (1978) Genetic evidence for naturally occurring hybrids between *Mytilus edulis* and *Mytilus galloprovincialis*. *Evolution* 32, 354-364.
- Spearman C (1904) The proof and measurement of association between two things. *American Journal of Psychology* 15, 72-101.
- Väinölä R, Hvilsum MM (1991) Genetic divergence and a hybrid zone between Baltic and North Sea *Mytilus* populations. *Biological Journal of the Linnean Society* 43, 127-148.
- Viard F, Delay B, Coustau C, Renaud F (1994) Evolution of the genetic structure of bivalve cohorts at hybridization sites of the *Mytilus edulis*-*M. galloprovincialis* complex. *Marine Biology* 119, 535-539.

- Waite JH (1992) The formation of mussel byssus: anatomy of a natural manufacturing process. In: Structure, Cellular Synthesis and Assembly, of Biopolymers. Results and Problems in Cell Differentiation (ed. Case ST). Springer-Verlag, Berlin.
- Walsh PS, Metzger DA, Higushi R (1991) Chelex 100 as a medium for simple extraction of DNA for PCR-based typing from forensic material. *Biotechniques* 10, 506-513.
- Weir BS, Cockerham CC (1984) Estimating  $F$ -statistics for the analysis of population structure. *Evolution* 38, 1358-1370.
- Williams GC (1966) *Adaptation and natural selection* Princeton University Press, Princeton.

**Table 1.** Sample location of Kerguelen blue mussels. mb: mussel bed

Site	Abbreviation	Region	GPS coordinates
<i>Port Christmas</i>	PCh	North	48°40'58"; 69°02'12"
<i>Anse du Jardin</i>	AJ	North	48°50'14"; 69°00'43"
<i>Port Matha</i>	PMt	North	48°55'59"; 69°02'35"
<i>Port Couvreur</i>	PCx	North	49°17'07"; 69°41'50"
<i>Ilot des Trois Bergers</i>	I3B	North	49°17'17"; 69°42'23"
<i>Anse Sablonneuse</i>	AS	North	49°18'53"; 69°42'30"
<i>Pointe Morne</i>	PMo	East	49°22'47"; 70°26'36"
<i>Rivière des Albatros</i>	RdA	East	49°21'08"; 70°22'47"
<i>Port-aux-Français</i>	PAF	Gulf of M.	49°21'08"; 70°13'07"
<i>Port Raymond</i> (deep bay)	PR1	Gulf of M.	49°20'19"; 69°48'20"
<i>Port Raymond</i> (Hut)	PR2	Gulf of M.	49°20'27"; 69°49'22"
<i>Ile haute</i>	IH	Gulf of M.	49°23'13"; 69°56'20"
<i>Ile aux Moules</i>	IM	Gulf of M.	49°25'04"; 69°56'54"
<i>Ile Guillou</i> (north)	IGn	Gulf of M.	49°28'10"; 69°48'23"
<i>Portes de Fer</i>	PF	Gulf of M.	49°26'34"; 69°45'
<i>Henri Bossière</i> Fjord, 200 m downstream from mb	BO200av	Gulf of M.	See Fig. 1
<i>Henri Bossière</i> Fjord, 100 m downstream from mb	BO100av	Gulf of M.	See Fig. 1
<i>Henri Bossière</i> Fjord, eastern part of mb	BOCRD	Gulf of M.	See Fig. 1
<i>Henri Bossière</i> Fjord, center of mb	BOCentre	Gulf of M.	49°24'28"; 69°40'06"
<i>Henri Bossière</i> Fjord, western part of mb	BOCRG	Gulf of M.	See Fig. 1
<i>Henri Bossière</i> Fjord, 100 m upstream from mb	BO100am	Gulf of M.	See Fig. 1
<i>Henri Bossière</i> Fjord, 200 m upstream from mb	BO200am	Gulf of M.	See Fig. 1
<i>Henri Bossière</i> Fjord, front of hut	BOCAB	Gulf of M.	49°24'07"; 69°38'37"
<i>Henri Bossière</i> Fjord, deep part	BOFF	Gulf of M.	49°23'36"; 69°37'48"
<i>Armor</i>	Ar1	Gulf of M.	49°27'50"; 69°43'40"
<i>Armor</i>	Ar2	Gulf of M.	49°27'50"; 69°43'40"
<i>Halage des Swains</i>	HdS	Gulf of M.	49°32'57"; 69°48'05"
<i>Port Jeanne d'Arc</i>	PJDA	Gulf of M.	49°33'07"; 69°49'26"
<i>Port Bizet</i>	PB	Gulf of M.	49°31'02"; 69°54'13."
<i>Ile Subm</i>	IS	Gulf of M.	49°30'18"; 70°09'38"
<i>Baie des Swains</i>	BdS	South	49°33'02"; 69°46'23"
<i>Baie de la Table</i>	BT	South	49°31'; 69°11'15"
<i>Fjord des Portes Noires</i>	FPN	South	49°29'; 69°06'06"
<i>Baie de la Mouche</i>	BM	South	49°32'56"; 69°05'10"
<i>Port Curieuse</i>	PCu	West	49°21'41"; 68°48'35"

**Table 2.** Kerguelen blue mussels. Jost’s D differentiation estimates and its confidence interval (CI) calculated using a set seven populations common to the allozyme study of Blot (1989) and Blot *et al.* (1989) and present study. Populations were PMt and PCx from the North region, PAF, IS, HdS, and BOS from the Gulf of Morbihan (all samples within the Bossière Fjord were pooled), and BT (*Glu-5’* and *mac-1*) or “Larose” (allozymes) from the South region. Bold values have confidence intervals that do not include zero

Locus	D	CI
<i>Glu-5’</i>	<b>0.049</b>	<b>0.023-0.075</b>
<i>Mac-1</i>	0.002	0.000-0.008
<i>LAP1</i>	0.014	0.000-0.032
<i>LAP2</i>	0.011	0.000-0.025
<i>PGD</i>	<b>0.032</b>	<b>0.017-0.047</b>
<i>PGI</i>	0.009	0.000-0.027
<i>PGM</i>	0.007	0.000-0.018
<i>GOT1</i>	0.000	0.000-0.000
<i>GOT2</i>	0.001	0.000-0.002
<i>MDH1</i>	0.001	0.000-0.003
<i>MDH2</i>	0.001	0.000-0.003

**Table 3.** Allelic frequencies at loci *Glu-5'*, *mac-1* and haplotype composition at locus *COI* for each sample. *N*: sample size;  $H_{n.b.}$ : non-biased estimate of genetic diversity; *f*: Weir & Cockerham's (1984) estimate of Wright's  $F_{IS}$ ; \*: significant values at the 5% level; ns: non-significant. Substrate: rock (R), blocks (B), gravels (G), sand (S). Slope: flat (F), steep (St), hangover (H). Wave exposure: sheltered (Sh), exposed (E). Salinity: oceanic water (OW), low-salinity water (LSW). *Macrocystis*: presence (P) / absence (A)

Region	Sample	Locus								Environmental factor						
		<i>Glu-5'</i>				<i>mac-1</i>				<i>COI</i>		Substrate	Slope	Exposure	Salinity	<i>Macrocystis</i>
		<i>N</i>	Frequency of allele <i>G</i>	$H_{n.b.}$	<i>f</i>	<i>N</i>	Frequency of allele <i>a</i>	$H_{n.b.}$	<i>f</i>	<i>N</i>	Haplotype					
North	PCh	51	0.26	0.393	-0.149 ns	49	0.9	0.185	0.346 ns	4	F1, F3 (3)	R	H	Sh	OW	P
North	AJ	106	0.41	0.485	-0.091 ns	49	0.92	0.152	-0.079 ns	-		G	St	Sh	OW	P
North	PMt	50	0.24	0.369	0.133 ns	48	0.88	0.221	-0.134 ns	2	F1, F5	G	St	Sh	OW	P
North	PCx	109	0.2	0.324	0.150 ns	48	0.96	0.081	-0.033 ns	4	F4, F5 (2), F12	B	H	E	OW	P
North	I3B	50	0.17	0.285	0.230 ns	49	0.94	0.116	0.303 ns	4	F4 (2), F5, F12	R	H	E	OW	P
North	AS	54	0.21	0.338	-0.151 ns	50	0.94	0.114	0.304 ns	-		G	F	Sh	OW	A
North	PMo	50	0.24	0.369	-0.086 ns	50	0.92	0.149	-0.078 ns	2	F2, F16	B	St	E	OW	P
North	RdA	50	0.09	0.166	0.155 ns	50	0.83	0.285	0.233 ns	3	F1 (3)	S	F	Sh	LSW	A
Gulf of M.	PAF	50	0.45	0.500	0.161 ns	48	0.93	0.137	-0.069 ns	2	F2, F4	B	St	E	OW	P
Gulf of M.	PR1	50	0.52	0.504	0.129 ns	49	0.93	0.134	-0.067 ns	4	F4, F5 (4)	S	F	Sh	LSW	A
Gulf of M.	PR2	50	0.45	0.500	0.000 ns	49	0.81	0.316	0.031 ns	-		G	F	Sh	LSW	P
Gulf of M.	IH	116	0.44	0.495	-0.186 *	79	0.95	0.097	-0.047 ns	5	F1, F5, F13, F14, F15	R	H	E	OW	P
Gulf of M.	IM	118	0.44	0.494	0.091 ns	78	0.94	0.121	-0.062 ns	1	F5	R	St	E	OW	P
Gulf of M.	PJDA	115	0.48	0.501	0.168 ns	79	0.94	0.119	-0.062 ns	-		B	St	E	OW	P
Gulf of M.	HdS	71	0.48	0.503	0.048 ns	69	0.95	0.097	-0.046 ns	3	F3, F5 (2)	B	F	Sh	OW	A
Gulf of M.	PB	127	0.46	0.500	0.086 ns	79	0.91	0.163	-0.091 ns	3	F1, F2 (2)	R	H	E	OW	P
Gulf of M.	IGn	77	0.6	0.484	0.035 ns	61	0.93	0.124	0.207 ns	3	F4, F5 (2)	B	F	Sh	OW	A
Gulf of M.	Ar1	50	0.72	0.407	-0.081 ns	48	0.93	0.137	-0.069 ns	2	F1, F2	R	F	Sh	LSW	A
Gulf of M.	Ar2	28	0.54	0.506	0.013 ns	30	0.87	0.235	0.151 ns	-		R	H	Sh	OW	A
Gulf of M.	BO200av	19	0.47	0.512	-0.029 ns	-	-	-	-	-		G	F	Sh	LSW	A
Gulf of M.	BO100av	49	0.47	0.503	0.109 ns	-	-	-	-	-		G	F	Sh	LSW	A
Gulf of M.	BOCRD	50	0.55	0.500	-0.243 ns	-	-	-	-	-		S	F	Sh	LSW	A
Gulf of M.	BOCentre	50	0.6	0.485	0.093 ns	49	0.94	0.116	-0.055 ns	5	F2, F3, F5, F9, F10	S	F	Sh	LSW	A
Gulf of M.	BOCRG	50	0.54	0.502	0.044 ns	-	-	-	-	-		S	F	Sh	LSW	A
Gulf of M.	BO100am	50	0.57	0.495	0.072 ns	-	-	-	-	-		G	F	Sh	LSW	A
Gulf of M.	BO200am	49	0.51	0.505	0.112 ns	-	-	-	-	-		G	F	Sh	LSW	A
Gulf of M.	BoFF	50	0.46	0.502	-0.198 ns	49	0.95	0.098	-0.044 ns	3	F2, F4, F5	S	F	Sh	LSW	A
Gulf of M.	BoCAB	49	0.45	0.500	-0.145 ns	50	0.96	0.078	0.494 ns	-		B	F	Sh	LSW	A
Gulf of M.	PF	27	0.43	0.498	0.335 ns	26	0.92	0.145	-0.065 ns	2	F1, F4	R	H	E	LSW	A
Gulf of M.	IS	40	0.39	0.481	0.222 ns	29	0.88	0.216	-0.122 ns	4	F2, F3, F4, F5	B	St	E	OW	P
South	BdS	69	0.37	0.469	0.167 ns	75	0.88	0.212	-0.129 ns	3	F1, F4, F5	B	F	Sh	OW	P
South	BT	50	0.32	0.440	-0.093 ns	30	0.85	0.259	-0.150 ns	3	F5 (2), F11	R	H	E	OW	P
South	FPN	130	0.37	0.470	0.001 ns	50	0.94	0.114	-0.054 ns	3	F1, F4, F12	S	F	Sh	LSW	P
South	BM	108	0.28	0.403	0.035 ns	56	0.92	0.149	-0.079 ns	2	F5, F8	R	H	E	OW	P
West	PCu	36	0.4	0.488	-0.083 ns	35	0.96	0.083	-0.031 ns	16	F1 (3), F2 (3), F3 (2), F4 (1), F5 (3), F6, F7, F12 (2)	R	H	E	OW	P

**Table 4.** Kerguelen blue mussels. Pairwise  $F_{ST}$  (Weir & Cockerham 1984) values at *Glu-5'* (above diagonal) and *mac-1* (below diagonal) loci. \*:  $P \leq 0.05$ ; \*\*:  $P \leq 0.01$ . *In bold*: significant values after FDR correction for multiple tests (Benjamini & Hochberg 1995). *Bold values without asterisks* have  $P \leq 0.001$

Sample	North							Gulf				
	PCh	AJ	PMt	PCx	I3B	AS	PMo	RdA	PAF	PR1	PR2	IH
PCh	-	<b>0.036*</b>	0	0.004	0.016	0	0	<b>0.091</b>	<b>0.063**</b>	<b>0.119**</b>	<b>0.063</b>	<b>0.057**</b>
AJ	0	-	<b>0.051**</b>	<b>0.09</b>	<b>0.111</b>	<b>0.073</b>	<b>0.052</b>	<b>0.202</b>	0	0.019*	0	0
PMt	0	0.001	-	0	0.003	0	0	<b>0.068*</b>	<b>0.082**</b>	<b>0.144</b>	<b>0.083**</b>	<b>0.075**</b>
PCx	0.014	0.004	0.035*	-	0	0	0	<b>0.036*</b>	<b>0.133</b>	<b>0.205</b>	<b>0.134</b>	<b>0.117</b>
I3B	0	0	0.013	0	-	0	0.004	0.016	<b>0.158</b>	<b>0.23</b>	<b>0.159</b>	<b>0.139</b>
AS	0	0	0.015	0	0	-	0	<b>0.048*</b>	<b>0.111</b>	<b>0.177</b>	<b>0.112**</b>	<b>0.099</b>
PMo	0	0	0.002	0.003	0	0	-	<b>0.07**</b>	<b>0.083**</b>	<b>0.145</b>	<b>0.084**</b>	<b>0.075</b>
RdA	0.007	0.024	0	0.071**	0.044*	0.046*	0.025*	-	<b>0.274</b>	<b>0.351</b>	<b>0.275</b>	<b>0.232</b>
PAF	0	0	0.006	0	0	0	0	0.032*	-	0	0	0
PR1	0	0	0.007	0	0	0	0	0.033*	0	-	0	0.006
PR2	0.021	0.042*	0.008	0.096**	0.065**	0.068**	0.044*	0	0.051*	0.053*	-	0
IH	0.010	0	0.030*	0	0	0	0	0.069**	0	0	<b>0.095</b>	-
IM	0	0	0.01554	0	0	0	0	0.049**	0	0	0.072**	0
PJDA	0.001	0	0.01636	0	0	0	0	0.050**	0	0	0.074**	0
HdS	0.009	0	0.023*	0	0	0	0	0.066**	0	0	<b>0.091**</b>	0
PB	0	0	0	0.009	0	0	0	0.022	0	0	0.04**	0.005
IGn	0	0	0.012	0	0	0	0	0.042*	0	0	0.064	0
Ar1	0	0	0.006	0	0	0	0	0.032*	0	0	0.051*	0
Ar2	0	0.001	0	0.043*	0.016	0.017	0.002	0	0.007	0.008	0	0.037*
BOCRD	-	-	-	-	-	-	-	-	-	-	-	-
BOCentre	0	0	0.015	0	0	0	0	0.045*	0	0	0.066**	0
BO100av	-	-	-	-	-	-	-	-	-	-	-	-
BO200av	-	-	-	-	-	-	-	-	-	-	-	-
BO100am	-	-	-	-	-	-	-	-	-	-	-	-
BO200am	-	-	-	-	-	-	-	-	-	-	-	-
BOCRG	-	-	-	-	-	-	-	-	-	-	-	-
BOFF	0.006	0	0.025*	0	0	0	0	0.058*	0	0	0.081**	0
BOCab	0.015	0.004	0.037*	0	0	0	0.003	0.074*	0	0	0.099**	0
PF	0	0	0.012	0	0	0	0	0.037	0	0	0.057*	0
IS	0	0	0	0.034	0.008	0.009	0	0	0.001	0.002	0.006	0.027
BdS	0	0	0	0.025*	0.008	0.009	0	0.005	0.002	0.002	0.018	0.020*
BT	0	0.012	0	0.063**	0.031	0.033	0.014	0	0.020	0.022	0	0.057**
FPN	0	0	0.016	0	0	0	0	0.047*	0	0	0.069**	0
BM	0	0	0.002	0.004	0	0	0	0.027*	0	0	0.045*	0
PCu	0.009	0.001	0.029	0	0	0	0	0.061*	0	0	0.084**	0

**Table 4** (continued)

Sample	Gulf											
	IM	PJDA	HdS	PB	IGn	Ar1	Ar2	CRD	Centre	100av	200av	100am
PCh	<b>0.053</b>	<b>0.082</b>	<b>0.084</b>	<b>0.072**</b>	<b>0.193</b>	<b>0.338</b>	<b>0.136**</b>	<b>0.149</b>	<b>0.198</b>	<b>0.077**</b>	<b>0.08*</b>	<b>0.167**</b>
AJ	0	0.006	0.005	0.003	<b>0.066</b>	<b>0.172</b>	0.024	<b>0.035**</b>	<b>0.066</b>	0.001	0	<b>0.0461**</b>
PMt	<b>0.071</b>	<b>0.103**</b>	<b>0.106**</b>	<b>0.092</b>	<b>0.220</b>	<b>0.369</b>	<b>0.163**</b>	<b>0.175</b>	<b>0.226</b>	<b>0.099**</b>	0.103*	<b>0.194</b>
PCx	<b>0.114</b>	<b>0.152</b>	<b>0.158</b>	<b>0.138</b>	<b>0.283</b>	<b>0.432</b>	<b>0.229</b>	<b>0.238</b>	<b>0.293</b>	<b>0.153</b>	<b>0.162</b>	<b>0.26</b>
I3B	<b>0.135</b>	<b>0.173</b>	<b>0.181</b>	<b>0.159</b>	<b>0.306</b>	<b>0.463</b>	<b>0.26</b>	<b>0.264</b>	<b>0.319</b>	<b>0.178</b>	<b>0.197</b>	<b>0.285</b>
AS	<b>0.095</b>	<b>0.123</b>	<b>0.135</b>	<b>0.118</b>	<b>0.254</b>	<b>0.406</b>	<b>0.201</b>	<b>0.21</b>	<b>0.263</b>	<b>0.129</b>	0.139**	<b>0.23</b>
PMo	<b>0.071</b>	<b>0.103</b>	<b>0.106</b>	<b>0.092</b>	<b>0.221</b>	<b>0.369</b>	<b>0.164</b>	<b>0.176</b>	<b>0.227</b>	<b>0.1**</b>	0.105**	<b>0.195</b>
RdA	<b>0.228</b>	<b>0.269</b>	<b>0.289</b>	<b>0.253</b>	<b>0.415</b>	<b>0.579</b>	<b>0.403</b>	<b>0.386</b>	<b>0.441</b>	<b>0.3</b>	<b>0.354</b>	<b>0.407</b>
PAF	0	0	0	0	0.034*	<b>0.13**</b>	0	0.01	0.033	0	0	0.017
PR1	0.006	0	0	0	0.003	<b>0.072**</b>	0	0	0.002	0	0	0
PR2	0	0	0	0	0.035*	<b>0.131</b>	0.001	0.011	0.034*	0	0	0.018
IH	0	0	0	0	<b>0.044</b>	<b>0.14</b>	0.01	0.02*	<b>0.044**</b>	0	0	<b>0.027*</b>
IM	-	0	0	0	<b>0.045</b>	<b>0.141</b>	0.008	0.02	<b>0.045**</b>	0	0	0.028*
PJDA	0	-	0	0	0.022*	<b>0.104</b>	0	0.003	0.021	0	0	0.009
HdS	0	0	-	0	0.021	<b>0.105</b>	0	0.002	0.020*	0	0	0.007
PB	0	0	0.005	-	<b>0.023*</b>	<b>0.115</b>	0	0.008	0.029*	0	0	0.014
IGn	0	0	0	0	-	0.024*	0	0	0	0.024	0.014	0
Ar1	0	0	0	0	0	-	<b>0.06**</b>	<b>0.05*</b>	0.022	<b>0.113</b>	<b>0.109**</b>	0.038
Ar2	0.019	0.020	0.035*	0	0.014	0.007	-	0	0	0	0	0
BOCRD	-	-	-	-	-	-	-	-	0	0.003	0	0
BOCentre	0	0	0	0	0	0	0.018	-	-	0.023	0.013	0
BO100av	-	-	-	-	-	-	-	-	-	-	0	0.009
BO200av	-	-	-	-	-	-	-	-	-	-	-	0
BO100am	-	-	-	-	-	-	-	-	-	-	-	-
BO200am	-	-	-	-	-	-	-	-	-	-	-	-
BOCRG	-	-	-	-	-	-	-	-	-	-	-	-
BOFF	0	0	0	0.003	0	0	0.03*	-	0	-	-	-
BOCab	0	0	0	0.01	0	0	0.045	-	0	-	-	-
PF	0	0	0	0	0	0	0.012	-	0	-	-	-
IS	0.011	0.012	0.025	0	0.006	0.001	0	-	0.011	-	-	-
BdS	0.01	0.01	0.012*	0	0.006	0.002	0	-	0.008	-	-	-
BT	0.035*	0.04*	0.054**	0.01	0.03	0.02	0	-	0.033*	-	-	-
FPN	0	0	0	0	0	0	0.02	-	0	-	-	-
BM	0	0	0	0	0	0	0.003	-	0	-	-	-
PCu	0	0	0	0.006	0	0	0.035	-	0	-	-	-

**Table 4** (continued)

Sample	Gulf	o	South								West
	200am	CRG	BdS	BT	FPN	BM	FF	Cab	PF	IS	PCu
PCh	<b>0.111**</b>	<b>0.138**</b>	0.016	0	0.019*	0	<b>0.072**</b>	<b>0.063**</b>	0.044*	0.023	0.033*
AJ	0.015	<b>0.029*</b>	0	0.009	0	<b>0.031**</b>	0	0	0	0	0
PMt	<b>0.135</b>	<b>0.164</b>	0.03*	0.006	<b>0.032*</b>	0	<b>0.092**</b>	<b>0.083*</b>	<b>0.062*</b>	0.037*	0.049*
PCx	<b>0.198</b>	<b>0.227</b>	<b>0.063</b>	0.030*	<b>0.064</b>	0.011	<b>0.144</b>	<b>0.133</b>	<b>0.112**</b>	0.078	<b>0.092**</b>
I3B	<b>0.22</b>	<b>0.252</b>	<b>0.084**</b>	<b>0.049*</b>	<b>0.084</b>	0.023	<b>0.17</b>	<b>0.159</b>	<b>0.140</b>	0.102**	<b>0.118**</b>
AS	<b>0.168</b>	<b>0.198</b>	<b>0.048**</b>	0.021*	<b>0.050**</b>	0.004	<b>0.122</b>	<b>0.112</b>	<b>0.092**</b>	0.061**	<b>0.074**</b>
PMo	<b>0.136</b>	<b>0.165</b>	0.029*	0.007	<b>0.032**</b>	0	<b>0.093</b>	<b>0.084*</b>	<b>0.064*</b>	0.038*	<b>0.05*</b>
RdA	<b>0.341</b>	<b>0.373</b>	<b>0.179</b>	<b>0.142</b>	<b>0.167</b>	<b>0.091</b>	<b>0.287</b>	<b>0.275</b>	<b>0.276</b>	<b>0.22</b>	<b>0.239</b>
PAF	0	0.005	0.003	0.025	0.005	<b>0.057**</b>	0	0	0	0	0
PR1	0	0	<b>0.035*</b>	<b>0.069</b>	<b>0.036*</b>	<b>0.113</b>	0	0	0	0.022	0.015
PR2	0	0.006	0.004	0.026*	0.005	<b>0.057**</b>	0	0	0	0	0
IH	0.003	0.014	0.005	0.023*	0.005	<b>0.051</b>	0	0	0	0	0
IM	0.003	0.014	0.003	0.021*	0.004	<b>0.049</b>	0	0	0	0	0
PJDA	0	0	0.017	<b>0.042**</b>	0.018*	<b>0.077</b>	0	0	0	0.007	0.001
HdS	0	0	0.016	<b>0.043*</b>	0.017*	<b>0.079</b>	0	0	0	0.006	0.001
PB	0	0.004	0.012	<b>0.035**</b>	0.013*	<b>0.067</b>	0	0	0	0.003	0
IGn	0.006	0	<b>0.092</b>	<b>0.136</b>	<b>0.091</b>	<b>0.186</b>	0.03*	0.036*	0.044*	<b>0.075</b>	<b>0.064**</b>
Ar1	<b>0.079**</b>	<b>0.06**</b>	<b>0.211</b>	<b>0.27</b>	<b>0.206</b>	<b>0.323</b>	<b>0.123</b>	<b>0.133</b>	<b>0.153</b>	<b>0.193</b>	<b>0.179</b>
Ar2	0	0	0.042*	<b>0.080**</b>	0.043*	<b>0.127**</b>	0	0.002	0.003	0.027	0.02
BOCRD	0	0	<b>0.056**</b>	<b>0.095</b>	<b>0.056</b>	<b>0.141</b>	0.008	0.012	0.017	0.041*	0.033*
BOCentre	0.005	0	<b>0.092**</b>	<b>0.138**</b>	<b>0.092</b>	<b>0.19</b>	0.029*	0.035	0.043	<b>0.074*</b>	<b>0.064**</b>
BO100av	0	0	0.011	0.036*	0.012	<b>0.071**</b>	0	0	0	0	0
BO200av	0	0	0.004	0.033	0.006	<b>0.07*</b>	0	0	0	0	0
BO100am	0	0	<b>0.07**</b>	<b>0.11</b>	<b>0.069**</b>	<b>0.16</b>	0.015	0.019	0.025	0.052*	0.043*
BO200am	-	0	0.03*	<b>0.062*</b>	<b>0.031*</b>	<b>0.1042</b>	0	0	0	0.017	0.011
BOCRG	-	-	<b>0.05*</b>	<b>0.085**</b>	<b>0.049*</b>	<b>0.131</b>	0.004	0.007	0.01	0.033	0.025
BOFF	-	-	0.008	0.032*	0.009	<b>0.065</b>	-	0	0	0	0
BOCab	-	-	0.004	0.026*	0.005	<b>0.057**</b>	0	-	0	0	0
PF	-	-	0	0.009	0	0.038	0	0	-	0	0
IS	-	-	0	0	0	0.019	0.021*	0.034	0.007	-	0
BdS	-	-	-	0	0	0.013	0.016	0.0262*	0.006	0	0
BT	-	-	0	-	0	0	0.047	0.065**	0.028*	0	0.004
FPN	-	-	0.01	0.035*	-	0.016*	0	0	0	0.012	0
BM	-	-	0	0.014	0	-	0	0.004	0	0	0.027*
PCu	-	-	0.02	0.053*	0	0.001	0	0	0	0.027	-



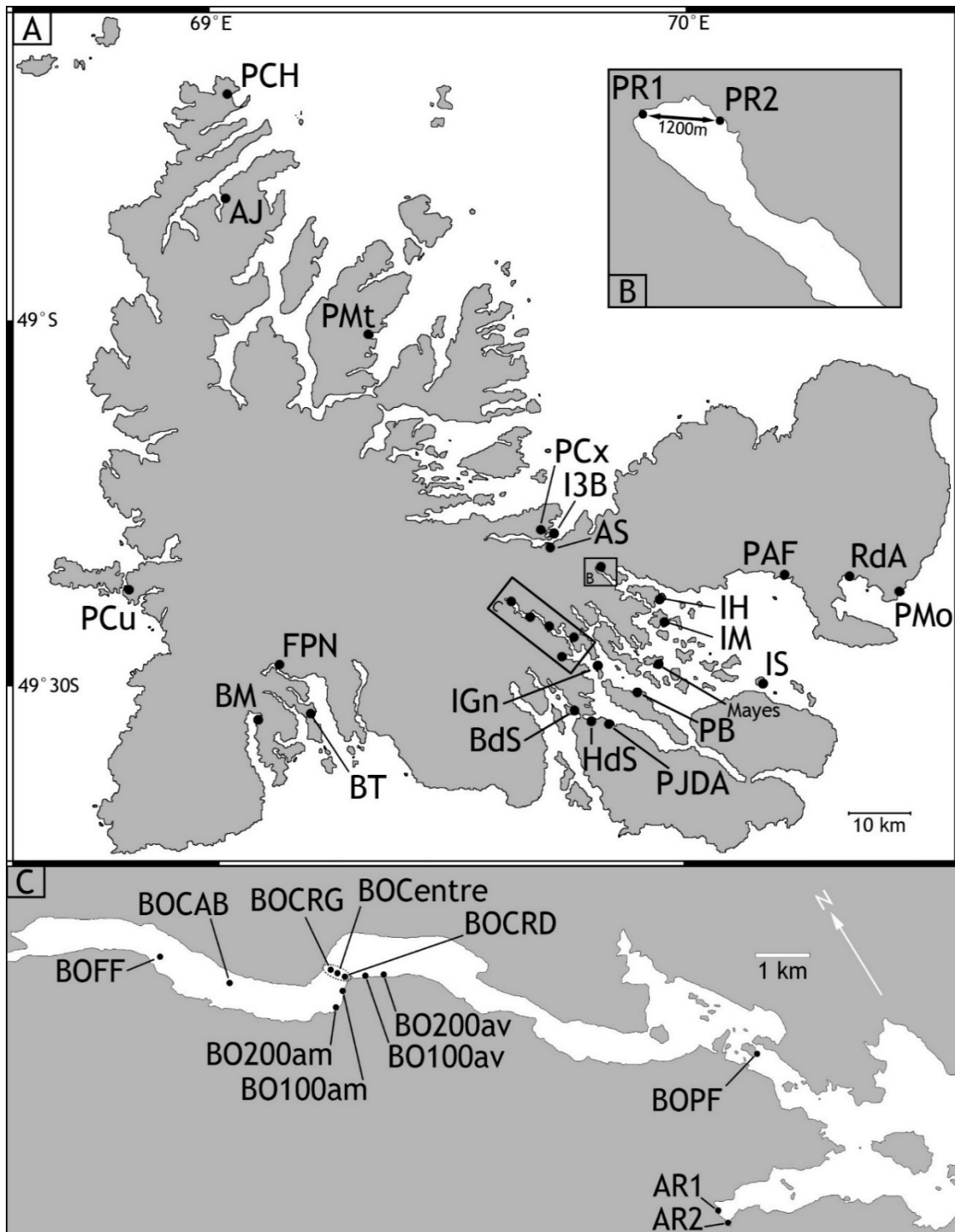
## *CAPTIONS TO FIGURES*

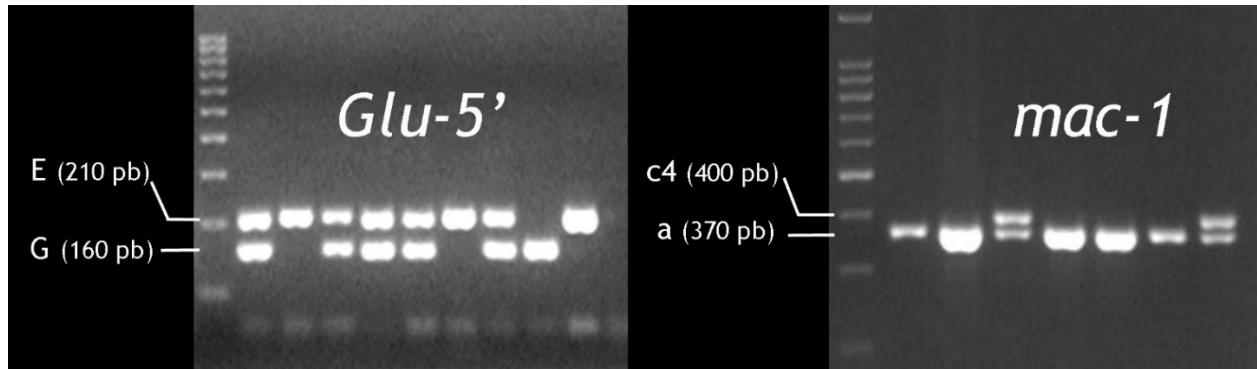
**Figure 1.** Sampling sites of Kerguelen blue mussels. Sampling details in Table 1; (A) Main map. (B) Detail of locations for samples PR1 and PR2. (C) Enlarged map of Henri Bossière Fjord with locations of samples AR and BO. *Mages* is the location of the sample 'KER' in Borsa et al. (2007).

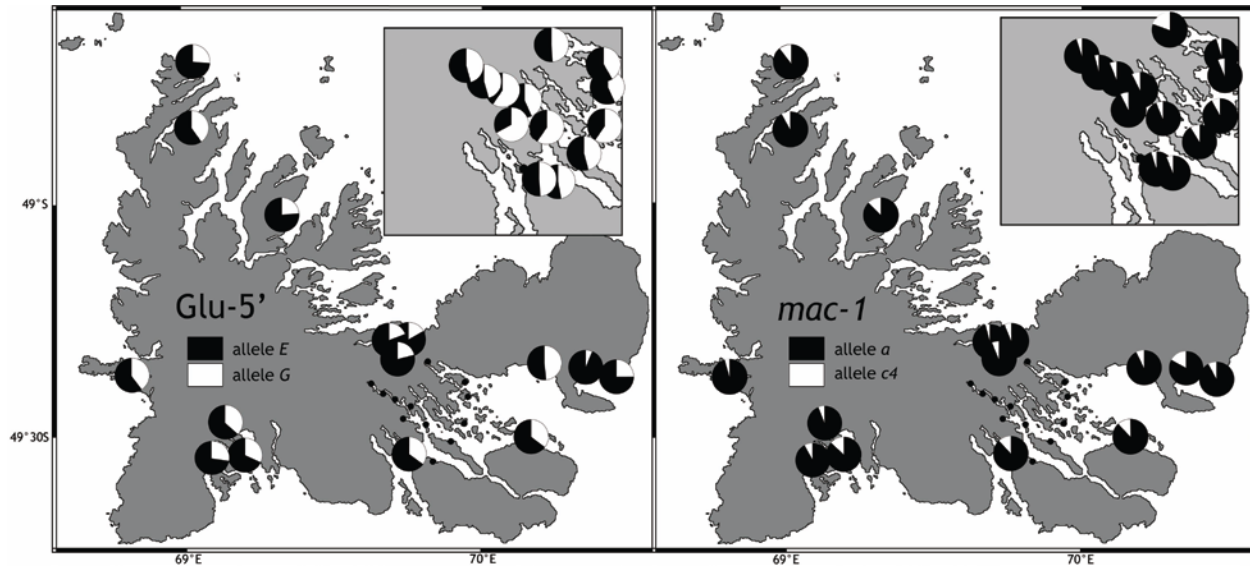
**Figure 2.** Kerguelen blue mussels. Individual phenotypes scored on agarose gels at nuclear loci. The left lane is a 100 pb DNA ladder.

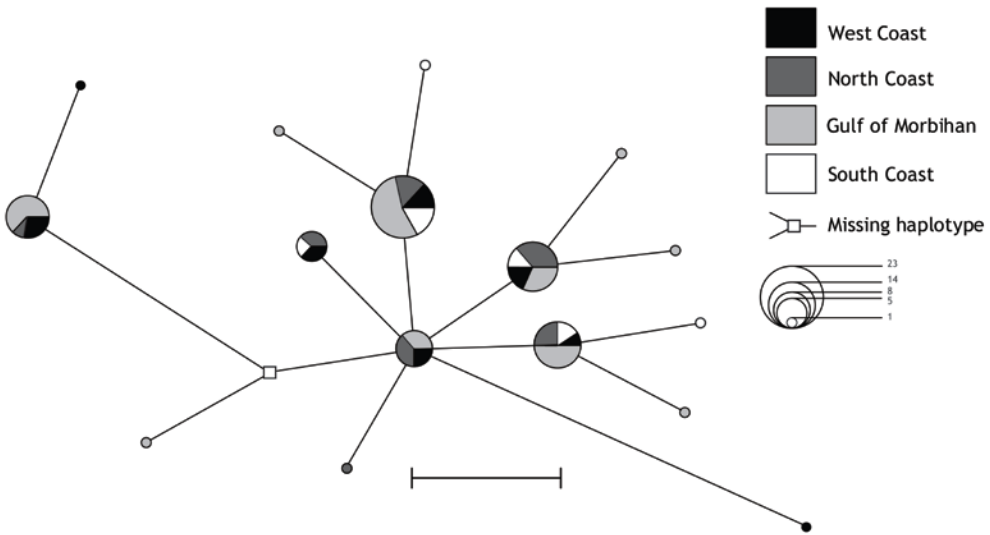
**Figure 3.** Kerguelen blue mussels. Geographic distribution of allele frequencies at the nuclear loci *Glu-5'* and *mac-1*. Insets: samples from the fjords and islands in the western part of the Gulf of Morbihan.

**Figure 4.** Median-joining parsimony network of *COI* haplotypes sampled in Kerguelen blue mussels. Scale bar represents one mutational step.









**SUPPLEMENTARY MATERIAL**

***Does natural selection explain the fine scale genetic structure at the nuclear exon Glu-5' in blue mussels from Kerguelen?***

by. K. Gerard, C. Roby, N. Bierne, P. Borsa, J.-P. Féral and A. Chenuil

**Table S1.** Molecular markers: locus name, source, primer sequence, annealing temperature (T°C) and fragment length (L) in base pairs

Locus	Primer	Sequence	T°C	L	Reference
<i>Glu-5'</i>	<i>Me15</i>	CCAGTATACAAACCTGTGAAGAC	54°C	210/160	Inoue et al. (1995) Daguin (2000)
	<i>Me17</i>	CTGGTGGATAATTTGTCT TTGC			
<i>mac-1</i>	<i>Mac1ex1-F</i>	GCTGTATTTCCATCAATTGTTGG	58°C	370/470	Daguin & Borsa (1999)
	<i>Macmyt-R</i>	CGAAAAATTGTAGTCTAGTTTTGTG			
<i>EFbis</i>	<i>EFbis-F</i>	ACAAGATGGACAATACCGAACCACC	52°C	400	Bierne et al. (2002)
	<i>EFbis-R</i>	CTCAATCATGTTGTCTCCATGCC			
<i>EFprem's</i>	<i>EFprem's-F</i>	TTCATCAAGAACATGATCACTGG	54°C	400	N.B. unpublished
	<i>EFprem's-R</i>	CACAGCACAATCAGCTTGAGATG			
<i>COI</i>	<i>LCO1490</i>	GGTCAACAAATCATAAAGATATTGG	59	645	Folmer <i>et al.</i> (1994) Gérard et al. (2008)
	<i>AM-HCO</i>	TAAACYTCAGGGTGMCCAAAAAYCA			

**Table S2.** Kerguelen blue mussels. Average  $H_S$ : within population average expected heterozygosity;  $H_T$ : total expected heterozygosity as estimated from electromorph frequency data at 9 allozyme loci (Blot 1989; Blot et al. 1989). Nine population samples (54-80 individuals, all but one 'locus x population combination' having more than 71 individuals genotyped) were genotyped from a similar regional sampling as ours. NA: allele numbers;  $F_{ST}$ : computed  $F_{ST}$  based on allele frequency data using  $F_{ST} = 1 - (\text{Average } H_S / H_T)$ ;  $P$ : P-values obtained from an exact test based on contingency tables of allele numbers per population and testing the null hypothesis that allele frequencies are similar among populations, using the nine population sample; P (North): same as P among the three North populations; P (South): same as P among the four Gulf populations

Locus	Average $H_S$	$H_T$	NA	$F_{ST}$	P	P (North)	P (Gulf)
<i>LAP1</i>	0.644	0.651	5	0.010	<b>0.000</b>	<b>0.000</b>	0.078
<i>LAP2</i>	0.405	0.417	3	0.027	<b>0.000</b>	0.063	<b>0.000</b>
<i>PGD</i>	0.317	0.334	3	0.052	<b>0.000</b>	<b>0.001</b>	<b>0.000</b>
<i>PGI</i>	0.642	0.649	4	0.012	<b>0.002</b>	0.884	<b>0.003</b>
<i>PGM</i>	0.402	0.412	4	0.023	<b>0.000</b>	<b>0.019</b>	0.341
<i>GOT1</i>	0.016	0.015	2	-0.005	0.175	ns	ns
<i>GOT2</i>	0.040	0.040	2	0.018	<b>0.001</b>	0.265	<b>0.000</b>
<i>MDH1</i>	0.078	0.079	2	0.009	0.005	0.606	0.335
<i>MDH2</i>	0.041	0.042	2	0.023	<b>0.000</b>	0.366	<b>0.036</b>