



**HAL**  
open science

## Can traditional forest management buffer forest depletion? Dynamics of Moroccan High Atlas Mountain forests using remote sensing and vegetation analysis

S. Hammi, Vincent Simonneaux, J.B. Cordier, Didier Genin, M. Alifriqui, N. Montès, L. Auclair

### ► To cite this version:

S. Hammi, Vincent Simonneaux, J.B. Cordier, Didier Genin, M. Alifriqui, et al.. Can traditional forest management buffer forest depletion? Dynamics of Moroccan High Atlas Mountain forests using remote sensing and vegetation analysis. *Forest Ecology and Management*, 2010, 260, pp.1861-1872. 10.1016/j.foreco.2010.08.033 . ird-00556984

**HAL Id: ird-00556984**

**<https://ird.hal.science/ird-00556984v1>**

Submitted on 11 Feb 2011

**HAL** is a multi-disciplinary open access archive for the deposit and dissemination of scientific research documents, whether they are published or not. The documents may come from teaching and research institutions in France or abroad, or from public or private research centers.

L'archive ouverte pluridisciplinaire **HAL**, est destinée au dépôt et à la diffusion de documents scientifiques de niveau recherche, publiés ou non, émanant des établissements d'enseignement et de recherche français ou étrangers, des laboratoires publics ou privés.

1 **Can traditional forest management buffer forest depletion?**

2 **Dynamics of Moroccan High Atlas Mountain forests using remote**  
3 **sensing and vegetation analysis.**

4  
5 **Sanae HAMMI<sup>1\*</sup>, Vincent SIMONNEAUX<sup>2\*\*</sup>, Jean Baptiste CORDIER<sup>3</sup>, Didier**  
6 **GENIN<sup>4</sup>, Mohamed ALIFRIQUI<sup>1</sup> Nicolas MONTES<sup>5</sup>, Laurent AUCLAIR<sup>4</sup>**

7 \* First corresponding author

8 \*\* Second corresponding author

9 <sup>1</sup> Equipe d'Ecologie Végétale Sol et Environnement, Faculté des Sciences Semlalia,  
10 Université Cadi Ayyad, Bd Prince Moulay Abdallah, BP 2390, 40000 Marrakech, Maroc

11 hammi.sanae@gmail.com / s.hammi@ucam.ac.ma ; alifriqui@ucam.ac.ma

12 Phone: +212 78 55 18 78 / Fax: +212 24 43 74 12

13 <sup>2</sup> CESBIO (Centre d'Etudes Spatiales de la Biosphère, UMR 5126, Université de Toulouse,  
14 CNES, CNRS, IRD) 18 avenue. Edouard Belin. Bpi 2801. 31401 Toulouse Cedex 9, France.

15 vincent.simonneaux@ird.fr

16 <sup>3</sup> AgroParisTech – ENGREF, Centre de Montpellier- Campus d'Agropolis - 648 Rue de Jean  
17 François Breton- BP 7355- 34086 Montpellier cedex 4

18 <sup>4</sup> IRD, Laboratoire Population- Environnement- Développement, UMR 151, IRD-Université  
19 de Provence. Université de Provence, Centre St Charles case 10. 3 place Victor Hugo, 13331  
20 Marseille cedex 3, France.

21 laurent.auclair@ird.fr ; didier.genin@ird.fr

1 <sup>5</sup> Institut Méditerranéen d'Ecologie et de Paléoécologie (IMEP), Equipe Diversité  
2 Fonctionnelle des Communautés Végétales (UMR CNRS 6116) – Aix-Marseille Université,  
3 Centre Saint-Charles – Case 4, 3, place Victor Hugo, 13331 Marseille Cedex 03, France  
4 nicolas.montes@univ-provence.fr

5  
6  
7  
8  
9  
10  
11  
12  
13  
14  
15  
16  
17  
18  
19  
20  
21  
22  
23  
24  
25  
26  
27  
28  
29  
30  
31  
32  
33

1 **Abstract**

2 On the south shore of the western Mediterranean Basin, mountain forest ecosystems are  
3 degraded, mainly due to their overexploitation. Topographic, edaphic and climatic conditions  
4 create stressful growing conditions and sensitive ecosystems. Nonetheless, in these  
5 ecosystems, forests remain an important resource for the subsistence of local populations.  
6 Historically the vulnerability of this resource has prompted mankind to establish traditional  
7 control forms of forest and pastoral areas. These common resource management systems are  
8 still functioning in the Moroccan High Atlas Mountains under the name of *agdal* which refers  
9 to the territory, the resources and access rules laid down by the local population in order to  
10 manage the territory.

11 The estimation of land cover changes was a suitable method to evaluate the effectiveness of  
12 these community-based systems for forest conservation. In this paper we highlight the impact  
13 of this traditional management on woodland dynamics in a mountainous area (Aït Bouguemez  
14 Valley) through the use of remote sensing approaches, associated with forest structure  
15 characterisation and the analysis of social mechanisms. A diachronic analysis based on the  
16 comparison of aerial photographs (dated 1964) with a recent Spot 5 satellite image (from  
17 2002, 2.5 meters resolution) was performed. Estimation of changes in canopy cover  
18 percentage was achieved using a graphic chart as a base for the photo-interpretation, and a  
19 subsequent validation by field sampling. A map of canopy cover changes between 1964 and  
20 2002 was produced. Ecological measurements of trees were also achieved on field plots.

21 The results indicate that in the past 38 years, forest ecosystems have been affected by a  
22 relative decrease of 20.7% of the total forest area, and 8.7% for the mean canopy cover  
23 percentage. However, strong disparities in forest dynamics arose according to the *agdal* or  
24 non-*agdal* status of the forest. Significant progression in canopy cover is noted in controlled  
25 *agdal* areas but large degradation has occurred outside. Regarding the stand ecological

1 conditions, we observed significant differences in the stand structure, according to the  
2 management mode. We suggest through this study increased recognition of customary forest  
3 regulations, which may be adapted and extrapolated to other communities. However, from an  
4 ecological point of view, the *agdal* system alone is not sufficient to reach a viable  
5 management mode in the long term.

6

7 **Keys Words:** Moroccan High Atlas – Forest - *Agdal* – Remote sensing – Canopy cover -  
8 Vegetation structure – Traditional management

9

10

11

12

13

14

15

16

17

18

19

20

21

22

# 1 Introduction

2 In various marginal areas all over the world, exploitation of natural resources has long been  
3 controlled by traditional community-based rules of appropriation and extraction (Masri, 1991;  
4 Colchester, 1994; Genin et al., 1995; Berkes, 1999; Uprety, 2008). Niamir (1990) achieved an  
5 extensive inventory of the management rules encountered in African sylvo-pastoral resources.  
6 Considered for a long time as a relic of past, these practices — showing a good knowledge of  
7 ecosystems functioning and a good adaptability to changes — are nowadays subject of  
8 renewed interest especially due to the generalization of sustainable development rhetoric. One  
9 major debate is to know how to combine these traditional systems with modern state policies  
10 (Folke, 2004; Armitage, 2005).

11 In the Atlas Mountains a similar system is found under the name of *agdal* (Berque, 1978).  
12 *Agdal* is a Berber generic term designating areas where access rights and uses of natural  
13 resources are governed by a local institution – usually the village, inter-village or intertribal  
14 assembly – which fixes rules concerning boundaries, periods and modalities of natural  
15 resource exploitation (Artz, 1986; Auclair, 1996; Ilahiane, 1999; Venema, 2002; Auclair and  
16 Alifriqui, 2005). Although *agdals* exist all over Morocco in various environments, our  
17 concerns will focus here on forest *agdals* which are less widespread and have been studied  
18 less than pastoral *agdals*. The valorisation of this local knowledge is also nurtured in Morocco  
19 by the widely accepted evidence of the general failure of modern institutions to manage the  
20 common sylvo-pastoral resources (Auclair, 2005). Many conservation programs in the world  
21 realized the necessity to have recourse for forest co-management in order to involve different  
22 actors: local communities, state-based authorities and nongovernmental organizations (Berkes  
23 et al., 2000; Plummer and FitzGibbon, 2004; Gautam et al., 2004; Michon et al., 2005).

1 However impacts of this type of management on forest dynamics and health are poorly  
2 documented and need to be objectively assessed. This aspect is critical, particularly since  
3 various authors argue that Moroccan sylvo-pastoral ecosystems experience a significant  
4 degradation of vegetation cover (Gauquelin et al., 2000; Lamb et al., 1991). This trend is due  
5 to the severity of topo-edaphic and climatic conditions, and to the anthropogenic pressure  
6 exerted on these areas (MCEF, 1999; Montès et al., 2000; Nygard et al., 2004). This pressure  
7 on forests can be interpreted as a consequence of four main factors: (1) the livelihood of rural  
8 peoples still relies quite exclusively on the self-sustaining exploitation of local natural  
9 resources for firewood, foliage fodder and timber wood; (2) a marked population growth in  
10 the last decades — especially since 1960; (3) a bioclimatic context limiting forest productivity  
11 (summer droughts and cold winters) strengthened by the recent climatic changes — Over the  
12 last fifty years the mean temperature in Morocco increased by 1°C (RDH50, 2006); (4)  
13 finally, in a broader historical context, a past colonial environmental policy that has led to a  
14 dispossession and a lack of responsibility of the indigenous to their territories (Davis, 2005).

15 The assessment of changes in forest canopy cover by using remote-sensing data is an  
16 objective method to evaluate the impact of human management (Taillefumier and Piégay,  
17 2003, Wimberly and Ohmann, 2004, Dalle et al., 2006). The inventories and analyses of the  
18 social processes affecting forest use, and the interactions between the different users and  
19 decision-makers, however, remain necessary to interpret the changes revealed by remote  
20 sensing (Berkes, 1999; Olsson et al., 2000; Mascia et al., 2003; Semwal et al., 2004).

21 The general aim of this study is to assess the impact of *agdal* management on the dynamics of  
22 the woodlands in the Aït Bouguemez Valley, since it is one of the rare zones in the High Atlas  
23 where the legitimacy and the influence of local institutions (e.g. *agdal*) have less been  
24 curtailed by the extension of government bureaucracy. More specifically, we want first to  
25 assess the ability of remote sensing for forest canopy mapping in a context of mountainous

1 area and open canopy cover. Secondly, beyond the widespread narratives of forest decline, we  
2 intend to quantify, in a spatialized manner, the actual past changes of forests, using also  
3 ground data for validation. Finally, the third objective is to get insights into the *agdal* actual  
4 ecological efficiency and its ability to ensure the sustainability of forest management.

5

## 6 **2 Description of the study area**

7 The Aït Bouguemez Valley is located in the middle of the Central High Atlas Mountains  
8 (Morocco) in the Azilal province. The study area is the upper part of this valley, covering an  
9 area of 13000 ha, with a mean elevation of 2000 m.a.s.l. (Fig. 1). It includes two valleys  
10 oriented East-West sheltering thirty villages: the *Ait Hkem* Valley in the North and *Ait Rbat*  
11 Valley in the South. These two valleys are delimited in the North and in the South by high  
12 mountainous ranges reaching 3700 m.a.s.l. (*Azourki, Waougoulzat*).

13 This valley occupies a wide syncline with a marl-chalky flat-bottom from the Superior Lias.  
14 Its geomorphology includes carbonate-bearing layers (calcareous and dolomite) and layers of  
15 marls organised in powerful syncline and anticline folds. Its flat bottom was formed during  
16 the quaternary era by alluvial deposits resulting from the closing of the valley by a landslide  
17 which created a lake, which later filled with sediments and deep deposits of fertile soil  
18 (Couvreur, 1968; Lecestre-Rollier, 1992).

19 This valley has a Mediterranean highland-type climate, with a semi-arid variant in the bottom  
20 of the valley and sub-humid on the most watered mountain sides (Couvreur 1968). The  
21 average monthly temperatures range between 5 and 20°C. The annual rainfall varies between  
22 350 and 750 mm, and precipitations are irregularly distributed in time and space, but they are  
23 more abundant during autumn and spring.



1 The bottom of the valley includes annual crops (cereals, potatoes, market gardening) as well  
2 as tree crops (apple, walnut) irrigated by traditional channels (*seguias*) diverting water from  
3 the rivers. The village boundary is organised perpendicularly to the mountainous axis. One  
4 can find, from the bottom to the top, the irrigated crops, the villages (*douars*), and some plots  
5 of dry cultivation (*bour*). The mid and high parts of the slopes are occupied by communal  
6 woody territories supplying firewood, leaf fodder and supporting grazing flocks. The lower  
7 parts of the wooded area close to the villages are often managed as *agdal*, while the high  
8 forest areas (outside *agdal*) are subjected to uninhibited forest utilization. The asylvatic areas  
9 in high altitudes constitute collective rangelands for ovine and caprine flocks. Some parts of  
10 these pastoral areas are also managed in *agdal* (Genin et al., 2009).

11 Forests and shrublands cover the north and south sides up to 2400-2700 m.a.s.l. and show  
12 contrasted densities and degradation levels. The vegetation is arranged in levels according to  
13 the altitudinal gradient: with phoenician (or red) juniper (*Juniperus phoenicea*) more  
14 abundant at the low and mid elevations as well as on the sunny south-facing sides. At medium  
15 altitude, we find holm oak (*Quercus ilex* L.) and prickly juniper (*Juniperus oxycedrus* L.).  
16 Finally, at higher altitudes appears the Spanish juniper (*Juniperus thurifera* L.) in open stands,  
17 representing the upper tree-line.

### 18 **3 Forest management, the opposition between *agdals* and** 19 **government policy**

20 *Agdal* always consists of a temporary suspension of resource gathering aimed at preserving  
21 resources and creating stocks for critical periods. The subject of control mainly concerns  
22 pastoral resources in the asylvatic upper parts of mountains (Bourbouze, 1982; Gilles et al.,  
23 1992; Ilahiane, 1999), but other resources such as forest products, fruits, and crops may be  
24 concerned. Sacred areas (sanctuaries) are also affected by this type of collective land  
25 management. A village's forest territory in the Central High Atlas is usually divided in two

1 parts: a weakly regulated area where the major extractions of firewood and fodder occur, and  
2 one or two *agdal* areas (between 20 and 200 ha), representing between 10 and 40% of the  
3 total available forest territory. The management rules of *agdal* usually refer to standing wood  
4 and foliage fodder collection, while grazing is authorized year-round. During periods of  
5 cutting exclusion (usually from March to November), people obtain their supplies from areas  
6 outside of the forest *agdal*. These areas are then submitted to higher harvest pressure. Some  
7 villages have framed resource use for extra-*agdal* territories also. Regarding tree foliage  
8 collection, which constitutes up to 20% of the annual diet of non-transhumant small livestock  
9 (Genin et al., 2009), four types of rules can be prescribed, which vary depending on villages:

- 10 - Cutting Period: In the villages we studied it covers the periods when snow covers the  
11 area, possibly from December to April. Cutting can be authorized every day or only  
12 during specific days of the week.
- 13 - Quantities Harvested: Different configurations occur: no quotas or quotas based on the  
14 size of the family flock or fixed equal quotas for each family.
- 15 - Division of *agdal* in sector in order to allow collection rotation.
- 16 - Specifying Tree Species for Cutting: In some villages only holm oak is authorized for  
17 foliage cutting while cutting junipers is strictly forbidden. The motive adduced by  
18 peasants is that holm oak is more able to produce leaf regrowth.

19 This body of rules can fluctuate depending on the size of forest *agdals*, occurrence of extreme  
20 climatic events, perceptions concerning the state of natural resources and battles of wills  
21 within village assemblies (Lecestre-Rollier, 1986). Other products from forest *adgals*, such as  
22 firewood or timber for roof construction, are submitted to prior authorization by the village's  
23 assembly who determine in a timely manner how they are to be used. Custodians of the  
24 *agdals* are sometimes designated locally and contraveners are fined or handed over to local  
25 authorities.

1 Overlapping with the *agdal* management are the state forestry policies in Morocco, which  
2 were conceived during the French protectorate period (1912 – 1956). They were essentially  
3 based on “declensionist” narratives of the decline of a previously fertile landscape by  
4 centuries of deforestation and overgrazing by Arab nomads and later by the Berber  
5 indigenous (Davis, 2005). However, recent paleoecological studies have questioned the rates  
6 of deforestation in Africa (Fairhead and Leach, 1996). The strategy adopted afterwards by the  
7 forest department to reconstitute the assumed degraded lands consisted of restricting access to  
8 “forest lands” — including all forested areas and rangelands outside irrigated farmlands.  
9 These areas came under the review of the forestry department; in these spaces cutting green  
10 wood is forbidden, while the right to gathering deadwood on the ground and grazing are  
11 granted to the local population (*Dahir* from 1917: Moroccan Royal Decree that constitutes the  
12 basis of the Moroccan forest code). However, the Moroccan Forest Code was not enforced in  
13 the Aït Bouguemez Valley until the implementation of a Forest Guard in 1985. Despite his  
14 presence, federal law enforcement measures were ineffective in practical terms, in view of the  
15 dominance and power of local law (Lecestre-Rollier, 1992; Aubert et al., 2009).

16 The environmental and socio-economic services delivered by *agdals* are closely linked to the  
17 overall functioning of the local agro-sylvo-pastoral system and the socio-territorial  
18 organization of Berber society (Bourbouze, 1999). Thus, exogenous state regulation is poorly  
19 compatible with local lifestyles (Aubert, 2009). Despite the progressive introduction of gas  
20 for cooking in the last few years, wood harvesting is still necessary for heating and to provide  
21 leaf fodder, especially for the poorest families whose purchase capacities are very limited.  
22 Over time, a status quo has set in between the traditional rules and the Moroccan forest law.

## 1 **4 Materials and methods**

2 The analysis of the actual forest structure and its comparison with canopy cover obtained  
3 from remote sensing are both important for assessing the accuracy of changes which have  
4 occurred (Hudak and Wessman, 1998; Ingram and Dawson, 2006), and also for better  
5 understanding different factors leading to these changes. Many authors have successfully  
6 mapped forest changes from satellite images (Hall et al., 1991, Cayuela et al., 2006, Dalle et  
7 al., 2006), as long as variations in species and densities were significant enough to influence  
8 the spectral signatures. However, for an accurate assessment of a canopy cover percentage,  
9 especially when variations are subtle, aerial photographs are more suitable (Hudak and  
10 Wessman, 1998, Carmel and Kadmon, 1998, Kadmon and Harari-Kremer, 1999, Tuominen  
11 and Pekkarinen, 2005). In order to observe the changes that occurred during the last forty  
12 years on canopy cover, we compared aerial photographs from 1964 with a very high  
13 resolution Spot 5 panchromatic image (2.5 meters resolution) from 2002. To go further and  
14 reveal the influence of the management practices on the characteristics of vegetation  
15 (Vermeulen, 1996), field measurements describing forest structure were conducted inside and  
16 outside *agdal*. We put emphasis on holm oak because of its extensive use as forage and  
17 firewood, and on juniper as endangered species (Gauquelin et al., 2000). This synchronic  
18 approach enabled us to establish the compatibility between the changes observed from remote  
19 sensing and the current state of the forest structure, which is useful for refining the analysis of  
20 change processes (Ingram and Dawson, 2006). Enquiries on land-use regulations, local  
21 perceptions, and interferences between the different actors who were part of this study  
22 provided more arguments to better interpret and understand the changes that occurred in  
23 forest stands (Dalle et al., 2006).

## 1 **4.1 Remote sensing data processing**

2 The data used for this study include:

- 3 - A SPOT 5 panchromatic satellite image dated 13 October 2002, at 2.5 m resolution.
- 4 - A set of aerial photographs dated August 1964 at 1:40000 scale. They were scanned at  
5 300 dpi resolution resulting in an approximate ground resolution of 3.4 meters.
- 6 - A digital elevation model at about 80 m spatial resolution (SRTM mission,  
7 <http://seamless.usgs.gov/>).
- 8 - Topographic maps at 1:100000 scale (Zaouiat Ahansal sheet, issued from aerial  
9 photographs from 1964).

10 The aerial photographs and the SPOT image were orthorectified using image processing  
11 software (ENVI 4.2 © RSI), using the digital elevation model and the georeferenced  
12 topographic map.

13 In order to choose a suitable method to derive the canopy cover from aerial photographs, a  
14 review was made. Digital processing has often been used, either applying texture analysis  
15 (Hudak and Wessman, 1998, Tuominen and Pekkarinen, 2005), or simple thresholding  
16 techniques (Epp et al. 1983; Warren and Dunford. 1986; Spencer and Hall, 1988). Tree  
17 canopies generally appear dark on clear soil. It is thus possible to threshold the images to  
18 distinguish between soil and canopy, generating a binary image giving their areas. However,  
19 the heterogeneity of grey levels for the same objects in one document — especially due to  
20 variable ground illumination, variable soil brightness and photographic vignetting effect —  
21 made it impossible to apply a single threshold for a whole photo or image, and required  
22 complex radiometric corrections (Carmel and Kadmon, 1998, Tuominen and Pekkarinen,  
23 2004). We chose instead to use visual photo interpretation to derive the canopy cover  
24 percentage from the orthorectified black and white documents, on which homogeneous

1 polygonal units were delineated using a GIS software (Arcview © ESRI). During the same  
2 process, the extent of villages and irrigated areas was delineated.

3 The canopy cover percentage of these units was estimated visually based on a graphic chart  
4 figuring various cover percentages (Godron et al. 1983). Rousset (1999) also used this method  
5 and estimated a mean error of 10%, or 20% for a non specialist. Moreover, Defourny (1990)  
6 and Kadmon and Harari-Kremer (1999) showed that the visual estimates of canopy covers  
7 were equivalent to numerical thresholding. To reduce interpretation errors, the task was  
8 subsequently validated by a second photo interpreter. A limitation of this method lies in the  
9 confusion between the trees and their shadows, these two elements having the same grey  
10 level. The shadow is determined by three factors: the morphology of the trees (height –  
11 diameter ratio), the slope and aspect of the ground relatively to the sun (thus the time and date  
12 of acquisition of the data), and the observation angle of the sensor. As it is impossible to  
13 account for all these factors during interpretation, the visually estimated percentages we  
14 subsequently scaled based on ground measured percentages (Ko et al., 2009). Ground  
15 measurements of canopy cover percentage were achieved as explained in the following  
16 section, and they were compared with visual estimates of the 2002 image. A regression line  
17 was obtained and was applied to estimated percentages for both dates, assuming the  
18 correction was the same. The map of changes between both dates was obtained by overlaying  
19 the maps for each date and computing the differences in estimated canopy cover percentage.

## 20 **4.2 Ground characterization of forest stands**

21 The *agdals* were delineated by walking along the boundary with a GPS receiver with the help  
22 of the local natural resource managers. *Agdal* management practices were characterised in  
23 2004-2005 during an earlier interdisciplinary survey using anthropological enquiries with  
24 stakeholders and local authorities (Auclair, 2005; Cordier and Genin, 2008).

1 The ground sampling was done for 85 plots (fig.3) with a stratified distribution covering the  
2 diversity of forest types and management, during the period from April to July 2007 (Cordier  
3 and Genin, 2008). The plots were squares of 20 or 40 meters per side, depending on the tree  
4 density — at least twelve trees per plot (Pardé and Bouchon, 1988), covering a total area of 3  
5 ha. In order to compare the visually interpreted percentages with ground values, the plots  
6 were also spatially clustered in 27 sites homogeneous regarding canopy cover percentage,  
7 each of them including three plots, exceptionally two or four. The visual percentage cover for  
8 each site was linked with the average of the corresponding plots. The area sampled ranged  
9 over the entire canopy cover percentage values, and over various types of change (decrease,  
10 increase, stability).

11 In order to measure the canopy cover for each plot, the crown projection of each tree (Cp) was  
12 calculated with the mean of perpendicular diameters (D1, D2) and using the oval area  
13 equation:  $Cp = 0.25 * \pi * D1 * D2$ .

14 In order to assess the changes observed between the two dates, a description of the ecological  
15 conditions of individual trees and of the stand as a whole was achieved. The following  
16 parameters were recorded in each plot (Montès et al 2000, 2002; Cordier and Genin, 2008):

- 17 - Species and morphology of each tree: well-defined multi-stemmed or single-stemmed trees,  
18 and bushy stature (includes multi-stemmed and less than 1,80m height).
- 19 - Tree's height, and tree diameter at breast height from which the tree basal area was  
20 calculated
- 21 - As an indicator of pressure on forage resources, the net foliage volume was measured using  
22 the ellipsoid volume formula, on the basis of the two diameters and the height of the crown.

1 - The numbers of regenerations and stumps were also listed. Regenerations considered here  
2 are isolated young trees, resulting from natural seeding, layering or sprouting from root  
3 systems.

4 Specific variables were observed for holm oak stands, which represent the majority of the  
5 forest cover. They are the most prone to harvesting to ensure leaf fodder and combustible  
6 supply, and have a good capacity of regeneration due to their sprouting ability (Retana et al.,  
7 1992; Espelta et al., 2006). Thus, cuttings produce coppice stands that may get higher if they  
8 are not cut again. The inventories carried out for holm oak included: tree crown's  
9 transparency by estimating the holes in crown — taken into account for computing the net  
10 crown volume, the distribution of stem diameters and the coppice cover percentage.

11 To assess the differences between management and change classes, ANOVA (Analysis of  
12 Variance) was applied for each variable observed, and MANOVA (Multiple Analysis of  
13 Variance) was also used for global discrimination between classes. The analyses were  
14 achieved including all species. For the analysis of *agdal* management, holm oak and juniper  
15 species were also considered alone, taking into account only plots where they were present  
16 and only the data regarding each species. We considered that a difference was significant  
17 below a probability of 0.05.

## 18 **5 Results**

### 19 **5.1 Accuracy assessment of canopy cover percentage estimates**

20 There was a general agreement between the ground cover percentages and the visual estimates  
21 for the 27 sites plots available ( $R^2 = 0.77$ ) (Fig.2). However, a bias appeared between the two  
22 variables since the visual estimations showed an overestimate of about 7.5% compared to the  
23 actual percentage. This bias is due to the shadows which were confused with the crowns on a  
24 black and white document. The linear relation is nevertheless well determined, and it was  
25 applied to all polygons on the map. The outlier with high cover percentage was kept as it is



1 not an error, but a site including big trees on a very steep slope, producing a lot of shadow.  
2 However, removing this point would decrease the overestimation to 4.5%. This shows that the  
3 absolute canopy cover percentage may still be affected by errors, but they are not affecting the  
4 relative 1964-2002 difference we are focusing on. The relation was defined for 2002, but we  
5 assumed a similar overall effect of shadows for the 1964 photographs and applied the relation  
6 to this date also. After correction, the residual RMS between estimated and ground cover  
7 percentages was 6.2%.

## 8 **5.2 Trends in land cover**

9 Changes in land use between 1964 and 2002 are presented in table 1. The area of irrigated  
10 perimeters shows a slight extension, and the village areas have almost doubled in the last 38  
11 years (Table 1). This is especially the case in the *Ait Hkem* Valley where the population is  
12 more numerous than in the *Rbat* Valley. The forested areas showed a strong reduction by  
13 1192 ha, meaning a drop of 20.7% in 38 years. This overall trend mainly included  
14 deforestation (total removal of the trees), but also some local spots of forest regeneration  
15 (trees recovery on previously bare soils) encountered on 35 ha (0.6%), and some plantations  
16 extending on 7 ha. Large changes affect the canopy cover percentages, with areas of  
17 regression, increase or stability (Fig. 3 - 4).

18 The overall change in the canopy cover percentage between 1964 and 2002 was estimated by  
19 computing the average value for each date on the basis of the same area, i.e. the union of areas  
20 occupied by forest at either date (5784 ha). For each date, we computed the average of the  
21 percentage of all polygons weighted by their area. The result was a decrease of the average  
22 canopy cover percentage of -1.3% (from 15 to 13.7%), which means a relative variation of -  
23 8.7% in 38 years. However, the average canopy cover percentage computed for each date  
24 taking into account only the forested areas, raised from 15.1% to 17.4%.

### 1 **5.3 Changes in canopy cover inside *agdals***

2 The *agdal* forest stands occupy an area of about 1667 ha, which represents 36% of the total  
3 forest stands. Some errors of delineation are however possible, especially as these entities are  
4 not immutable but may be modified throughout the years according to the resource evolution  
5 or to the villagers' needs. *Agdals* concentrate all the positive changes of canopy cover:  
6 progression in canopy cover percentage on 54,4% of the *agdal* areas against 5.4% of  
7 regression (fig.3). They show an increase of the canopy cover percentage of 3.1% in 38 years  
8 (from 15.8% to 18.9%), which represents a relative progression of about 19.6%, that is to say  
9 0.5% per year.

10 The results of the management practices survey show that the canopy cover may increase for  
11 several reasons (table 2). In some cases, the locals themselves notice an overexploitation of  
12 the *agdal*, consequently they modify its boundaries (Genin et al 2009). The competition  
13 between neighbouring villages may also trigger the creation of *agdals* by legal claimants to  
14 better control any intrusions. The plantations established by the Forest Office have also  
15 contributed to the local increase of canopy cover percentages. These plantations have  
16 contributed to the regeneration of 23 hectares of *agdals* which were bare in 1964. In some  
17 cases, forest exploitation is shifting inside the *agdal* area according to a rotation system,  
18 driven by the village council and linked to the stands' state so that the harvesting is done in  
19 the most productive areas, allowing the most degraded ones to regenerate.

20 In spite of this dominant tendency, some *agdals* were subjected to degradation between the  
21 two dates. The main reason was pressure on resources in the villages with scarce forest areas.

22 In some cases the claimants had to switch to gas for cooking in the last few years and to buy  
23 firewood and wood charcoal from a neighbouring valley. The difficult regeneration of  
24 Spanish Juniper (Gauquelin et al 2000) may also explain the decrease of tree cover.

1 Deforestation in *agdals* can also be the result of unresolved conflicts between villages. The  
2 map shows that 45 hectares are deforested within the *agdals* mainly due to this reason (Fig.3).

### 3 **5.4 Changes in canopy cover outside of *agdals***

4 As opposed to the *agdal* areas, the extra-*agdal* areas are marked by regressive changes. From  
5 the 4066 ha of forest located outside *agdals*, 1187 ha were deforested (29%). On the basis of  
6 the union of forested areas of 1964 and 2002, 42.7% shows a decrease of the canopy cover  
7 percentage (Fig. 5) — which includes the above mentioned deforested areas. Moreover the  
8 average percentage of areas outside *agdal* areas decreased by 3.1% in 38 years — from 14.6%  
9 to 11.5% — which means a relative decrease of 21.5%. The survey showed that extra-*agdal*  
10 areas are often remote from the villages and are the subject of conflicts over their use (Table  
11 2). They were formerly shared between several *tribes*, and are still today claimed by the  
12 neighbouring villages, which encourages excessive exploitation.

### 13 **5.5 Analysis of the stand's characteristics according to canopy cover** 14 **changes and management modes**

15 The analysis of canopy cover change that has been done so far has shown that changes  
16 observed in the map were corroborated by the history and the practices linked to these  
17 territories. In order to validate and detail this analysis, the relation between these changes,  
18 stand characteristics and management modes, was studied quantitatively for the 85 field plots.  
19 The measurements concerned only natural woodlands. Plantations are described in this study  
20 only by their stem density.

21 The overall comparison of the three classes of canopy cover change based on all variables  
22 using MANOVA shows a highly significant difference between change classes ( $P < 0.0001$ ).  
23 The ANOVA for each individual variable is presented in table 3. The canopy cover  
24 percentage decrease significantly from progression zones (29%) to regression zones (11%).  
25 The net crown volume, which is an indicator of harvesting of leaf fodder and branches, also

1 drops markedly from progression ( $5602\text{m}^3.\text{ha}^{-1}$ ) to regression zones ( $1767\text{m}^3.\text{ha}^{-1}$ ).  
2 Regenerations are more abundant in areas of stability and regression. These classes are indeed  
3 the most exploited and are likely to produce sprouts since the dominant species is the holm  
4 oak, which is known for its regrowth and coppicing ability. Tree density is also much higher  
5 in areas of stability because the regrowth capacity is balancing exploitation, which is not the  
6 case in regression areas. The number of stumps is significantly lower in areas of canopy cover  
7 progression, which are less exploited, but the maximum is not observed in regression areas,  
8 because stump extraction is often carried out in these areas.

9 A comparative analysis of the ecological characteristics of the stands according to the status  
10 of *agdal* or *extra-agdal* forest was achieved based on ground observations (Table 4 and 5).  
11 The MANOVA applied on all variables showed very significant difference between *agdal* and  
12 *extra-agdal* areas ( $P < 0.0001$ ) (Table 4). The canopy cover percentage dropped significantly  
13 from *agdal* areas (27%) to *extra-agdal* ones (12%) (Fig.6). *Agdal* areas contain significantly  
14 more tree stems, higher tree basal area, higher crown volumes, and slightly higher trees.  
15 Although the significance is poor, the number of stumps and regenerations is higher outside  
16 of *agdal* areas because of wood exploitation, as explained previously. Almost all of the  
17 plantations are observed outside of *agdal* areas, which corroborates the fact that planting  
18 operations prioritize the most degraded areas. Most of these plantations are less than 10-years  
19 old, thus their positive effect on the canopy cover is not apparent on the remotely sensed data  
20 from 2002.

21 Considering the importance of holm oak in the study area, a specific analysis was done for  
22 these stands (Table 5). The MANOVA also show a significant difference between *agdal* and  
23 *extra-agdal* areas ( $P < 0.0001$ ) (Table 4). As a whole, the same tendencies as the global  
24 analysis are observed. *Agdal* areas show a significantly higher canopy cover percentage but  
25 fewer bushy trees. Crown transparency is higher outside of *agdals*, emphasizing the leaf

1 fodder exploitation. There is a lower density of poles and medium stems outside *agdal* areas,  
2 but the number of big stems is the same. Conversely, more stumps are found outside *agdal*  
3 areas. This shows that exploitation may have first targeted areas with high wood potential,  
4 from which remain today large degraded trees, but with a significantly higher crown  
5 transparency and smaller crown volume. Indeed, the largest trees are not cut but only pruned  
6 because of the limited technical capabilities of the exploiters, usually women using axes and  
7 carrying wood on their backs.

8 A specific analysis was also conducted for junipers alone (Table 4), indicating no overall  
9 discrimination regarding the management type. However, regeneration densities — young  
10 trees and seedlings — are much lower than for holm oak, and regeneration is also higher in  
11 *agdal* areas ( $3.74 \text{ ha}^{-1}$ ) than outside of *agdal* areas ( $0.75 \text{ ha}^{-1}$ ) ( $P < 0.05$ ). Crown volumes and  
12 tree heights are also significantly higher inside *agdals*.

13

## 14 **6 Discussion**

15 Our study highlights first the contribution and limits of remote sensing and GIS to carry out a  
16 diachronic analysis of forest dynamics by using the canopy cover percentage as an indicator  
17 of forest resources — since it is the main indicator accessible for panchromatic remote sensing  
18 data. Despite the methodological problems linked to the interpretation of photographs  
19 (crown's shadow, slope, subjectivity, etc.), ground observations — either regarding the canopy  
20 cover percentage or the stands' ecological description — corroborate the canopy cover  
21 estimates and their changes issued from visual interpretation. Furthermore, polygons of  
22 complete deforestation are easily validated as trees that are disappearing. This can be  
23 confirmed on the ground, as some stumps are often still visible. Therefore, the influence of

1 these methodological limits remains relative and does not seem to significantly affect the  
2 mapping of canopy cover percentages.

### 3 **6.1 Insights in landcover changes gained from remote sensing**

4 Changes in land cover distribution were moderate and the valley still maintained the same  
5 landscape structure (Table 1). However, the change map shows that marked changes have  
6 occurred in forest areas since 1964. Despite the differential evolution of vegetation inside and  
7 outside *agdal* areas, the overall trend is a decrease in the wooded areas at an annual  
8 deforestation rate of 0.55% (disappearance of 20.7% of the forest areas since 1964, which  
9 means 31.5 ha each year). This figure may be compared with previous studies: the FAO  
10 (1995) statistics point out an annual deforestation of around 0.7% for Morocco which is  
11 consistent with Barbéro et al (1990) that suggests an annual rate of about 0.6% on the  
12 Moroccan scale. Indeed deforestation is very widespread outside *agdals* and especially the  
13 inter-village areas, in remote places away from the villages and also around the disputed  
14 boundaries of forest village territories. This decline of forest area is also linked with a drop in  
15 average canopy cover percentage (from 15 to 13.7%). However a closer analysis showed that  
16 this overall decrease of canopy cover was hiding an increase in density when considering only  
17 forested areas for each date (+2.3%). This densification effect is due to the fact that forest  
18 clear-cutting mainly affected areas of very low density, generally outside *agdals*, so that only  
19 dense forest patterns remain.

20 The overall forest decline hides significant contrasts regarding management modes. Canopy  
21 cover percentages increased in almost all *agdal* areas, and conversely it decreased almost  
22 everywhere outside *agdal* areas. This shows that this concept is still functioning, with the  
23 customary rules regulating access and uses. Moreover, we found during the survey that it is  
24 subject to adaptations through modifications of its boundaries or exploitation modes, to  
25 actually contribute to the resource preservation. We also observed the capacity of these stands

1 to grow when protected, despite their age and the severity of the bio-physical conditions they  
2 are subjected to. Deforestation observed outside *agdal* is particularly intense in the *Ait Hkem*  
3 Valley, where strong tribal conflicts lead to severe tree pruning and even to land cultivations.  
4 In many cases, only the arbitrary power of forest administration may resolve these conflicts  
5 by replanting the stands claimed by the villagers (Fig. 6). Quite the opposite of the *Ait Hkem*  
6 Valley, degradation is almost nonexistent in the *Rbat* Valley. This contrast may be related to  
7 the fact that the first valley shows a much higher human pressure, showed by the larger  
8 increase of population (resp. +160% and +85%) and cultivated areas (resp. +10% and 0%),  
9 favoured by a softer topography. According to the last population census in 2006, the  
10 population in the studied part of the *Ait Hkem* Valley was 5182 inhabitants, compared to only  
11 1610 in the *Ait Rbat* area, which represents a forest area per inhabitant of 0.67 and 2.3  
12 hectares respectively. Moreover, the population of the *Ait Bouguemez* area has more than  
13 doubled since 1960 (Auclair 2005), especially in the *Ait Hkem* Valley where this demographic  
14 growth has correlated with the forest degradation.

15 Considering all forest areas, a positive gradient of degradation appears from the valley to the  
16 summits, which contradicts the classical areola model according to which the closer to the  
17 villages, the higher the degradation should be (Vermeulen, 1996; Ingram and Dawson, 2006).  
18 This fact is mostly due to the positioning of *agdals* near the villages. Despite the greater  
19 efforts required to exploit the forest far from the village, what prevails here is the necessity to  
20 keep a security stock of biomass close to the village for winter use. The *agdal* system leads  
21 therefore to a transfer of pressure from areas near the bottom of the valley towards remote  
22 areas closer to the top as well as towards other valleys (*Ait Abbas*, *Ait Bou Oulli*). Such a  
23 transfer from highly controlled areas to remote less controlled ones was also observed in the  
24 Himalayas (Jackson et al., 1998; Gautam et al., 2004). Our study emphasizes the major  
25 interest of spatialized analysis of local changes as opposed to global statistics, which in our

1 case would have masked the *agdal* effect on forest changes. This point was also already  
2 mentioned in previous studies (Wimberly and Ohmann, 2004; Cayuela et al., 2006; Ingram  
3 and Dawson, 2006).

## 4 **6.2 Insights gained from the ground observation of vegetation**

5 The analysis of vegetation for the three types of change corroborated the mapping obtained  
6 from remote sensing. However, it appears that many areas mapped as “stable” also  
7 experienced a strong exploitation of vegetation which may have led to qualitative changes.  
8 More generally, the various canopy cover mapped using remote sensing may show very  
9 different morphology, which means that the changes in terms of area and percentage cover  
10 revealed by remote sensing analysis may neglect, at least locally, the qualitative changes of  
11 the vegetation. This fact underlines the limitation of remote sensing, which is efficient for  
12 mapping large areas, but fails when a detailed characterisation of vegetation is required, here  
13 for detailed change and management assessment (Wimberly and Ohmann, 2004; Cayuela et  
14 al., 2006; Ingram and Dawson, 2006).

15 Regarding the management modes, the analysis of vegetation characteristics shows that in  
16 *agdal* areas, stands are in better condition, with bigger trees showing larger basal area and  
17 larger crowns, showing evidence of little exploitation. The low wood exploitation is also  
18 unfavourable to the activation of vegetative regeneration for holm oak stands, which may in  
19 the long term endanger its sustainability. Conversely, outside of *agdals* the coppice resource  
20 dominates, trees are degraded and the abundance of holm oak coppices emphasizes the  
21 intensity of wood exploitation. When tree cover is maintained, it is often due to bushy stands,  
22 resulting from the degradation of previous tree clusters. The extensive wood and leaf fodder  
23 exploitation, combined with overgrazing, might even lead to the steppisation of these stands.  
24 These conclusions confirm a clear positive link between *agdal* management modes, the  
25 stands' health condition and the stands' *de facto* dynamic.



1 A high regeneration was observed for areas outside *agdals* because these areas include mainly  
2 holm oaks, known for their sprouting ability. However, this regeneration is only linked to  
3 previously existing trees which have been cut, and rarely to seedlings. Regeneration is thus  
4 lower inside *agdals*, which are less exploited. As opposed to holm oak, regeneration of  
5 junipers is higher in *agdals* compared to outside *agdals*, and it is also on the whole much lower.  
6 This feature may be related to the poor sprouting ability of junipers, even if Bertaudière et al.  
7 (2001) found that crown mutilations affecting the apical bud could lead to multi-stemmed  
8 junipers with higher biomass. This low regeneration may also be linked with the known great  
9 difficulty of this species in germinating related to seed dormancy (Fromard and Gauquelin,  
10 1993) and the elimination of seedlings by grazing. In our case the driving factor is grazing by  
11 small ruminants (sheep and goats), endangering the regeneration of these stands. The higher  
12 regeneration inside *agdals* can be linked with the higher proportion of this species in these  
13 areas, as grazing is the same in both areas. From this point of view, we can have doubts about  
14 the *agdals*'s capacity to assure the long-term durability of juniper stands. However some rare  
15 *agdals* have been tied to religious beliefs for many years and for this reason, have remained.  
16 In such spaces, which were not the focus of this study, various plant species were found as  
17 well as young tree shoots, and also well-developed undergrowth. Those spaces are likely to  
18 become an important reservoir of biodiversity in forest systems (Ilahiane, 1999; Becker and  
19 Ghimire, 2003; Bray et al., 2004).

### 20 **6.3 Implications for forest management**

21 The mean canopy cover percentage on the basis of the forest area in 1964 had a relative drop,  
22 - 8.7% in the last 38 years (from 15 to 13.7%), which means that two hectares of wood  
23 vegetation disappeared every year. This general trend encompasses two opposite evolutions,  
24 on one hand, an annual increase of canopy coverage by 1.4 ha in the *agdals*, and on the other  
25 hand, an annual decrease of 3.4 ha outside *agdals*. If we assume that the average conditions

1 prevailing since 1964 remain almost the same, the crude temporal extrapolation of these two  
2 trends would show that there will not be any vegetation left outside the *agdals* in 2140. From  
3 this date, if the decreasing rate observed until this point in the extra-*agdal* spaces is applied,  
4 the vegetation will have totally disappeared by 2400. This extrapolation, although not realistic  
5 as a scenario, allows us to better realise the magnitude of the dynamics over these last 38  
6 years. However, it may not absolutely represent the real future changes because of the  
7 difficulty of modelling the factors influencing this trend and the magnitude of human reaction  
8 capacity. On the other hand, the pressure exerted on forest depends on the socio-economic  
9 context and may change in the future, according to the changes that these societies are  
10 experiencing. Indeed, the rapid opening up of the valley due to tourism since the 1980's, the  
11 development of commercial agriculture and the national and international development  
12 initiatives — electrification in 2002, the introduction of the gas stove, the emergence of the  
13 cell phone in 2005, foreign aid offered by different NGOs — have widely contributed to  
14 accelerating the change of practices, as well as creating new production systems likely to  
15 partially reduce the pressure exerted on the forest. One example of these tendencies is the  
16 slight decline of pastoralism, which reduces the cutting of leaf fodder during the cold season,  
17 thanks to the increasing capacity of farmers to buy cereals instead (Aubert et al., 2009).  
18 However, in spite of the wide availability of gas, the use of wood is still essential to heat  
19 houses during the cold season and to operate the *hammams* (traditional baths).

20 The differential evolution of forests inside and outside the *agdal*, and the overall degradation  
21 of forest, emphasizes the failure of state-based policies to articulate with the traditional  
22 management of forest resources (Stevenson, 2004), especially in areas where customary  
23 management is absent. The same Moroccan forest code of 1917 implemented by the  
24 protectorate administration is still applicable. In other case studies, community management  
25 succeeded in preserving forest, with lower deforestation rates (Gautam et al., 2002; Bray et

1 al., 2004; Dalle et al., 2006), or progression (Gautam et al., 2004). However it seems that each  
2 context is specific, and the question is not to know whether or not community management  
3 can lead to sustainable management of forest, as there is no general answer, but “what  
4 physical, economical and sociological conditions will make a community system succeed or  
5 not in this task ?” Indeed it is clear that communities have a strong interest in a good  
6 management of their resources (Kelbessa, 2005). However, as in any system, a sustainability  
7 crisis may appear due to the emergence of uncontrolled factors (e.g. population growth,  
8 climate, conflicts). To find a path towards a new equilibrium, all skills need to be mobilized,  
9 and the fusion of traditional and external (e.g. scientific) knowledge may bring the solution  
10 (Becker and Ghimire, 2003; Mascia et al., 2003; Kelbessa, 2005; Dalle et al., 2006).

11 In this case study, our findings indicate that the rationality in forest use still remains  
12 unworkable due to the absence of alternatives that would reconcile the ecological resilience,  
13 the mitigation of the current degradation trends, and the population’s needs for livelihood.  
14 More specifically, the failure of forest management seems also to rely on the impossible  
15 equation between growing population needs and the physically limited production capacity of  
16 the natural environment (soils, climate) leaving no place to intensification, except with  
17 substantial inputs from outside the system. Such a saturation of traditional systems, triggered  
18 mainly by the population growth, is widely occurring in many places throughout the world  
19 (Niamir, 1990; Semwal et al., 2004). The solution relies on a deep transformation of the  
20 traditional system, typically changing from self-sufficiency to a higher level of connection  
21 with the external economy (people working in cities, multiplication of income sources). This  
22 explains why some forests close to urban areas may be in better condition than forests located  
23 in remote traditional areas (Gautam et al., 2004). A comparable environmental breakpoint was  
24 reached in the south of France in the 19<sup>th</sup> century, with a very strong degradation of  
25 mountains areas triggered by population growth, and was overcome during the 20<sup>th</sup> century

1 with the transition from a self-sufficient agriculture to a wider opening to the national  
2 economy (Taillefumier and Piégay, 2003). It is worth mentioning that ironically in some  
3 marginal areas abandonment of farmland may even lead to a strong progression of forests  
4 which may in turn pose other problems (Olsson et al., 2000; Taillefumier and Piégay 2003).

5 In the Aït Bouguemez Valley, given the central role of forests in these agro-pastoral systems  
6 and the pressure exerted on it, no miracle solution exists which allows for forest conservation,  
7 as long as the populations do not get alternative resources out — or by transformation — of  
8 the traditional system. It would be desirable for the state-based institutions (forest office,  
9 universities...) to redefine, in agreement with the local population, enhanced models of forest  
10 management. Forest administrations should be asked to promote new approaches including  
11 decentralized and participatory management of forest resources. The implementation and  
12 generalization of the ministerial decree launched in 2002, regarding monetary compensation  
13 for the exclusion of grazing flocks, may be a first step to establish a more confident  
14 relationship with local populations and to allow forest regeneration. These proceedings could  
15 be instituted through a consultation with the village council and local associations. The role of  
16 local NGOs might be crucial to broker the negotiations between the traditional system and the  
17 state-based one.

## 18 **7 Acknowledgments**

19 This study was conducted as a collaborative project involving the Laboratoire Population-  
20 Environnement-Développement (IRD-Université de Provence, Marseille) and the Faculté des  
21 Sciences Semlalia (Université Cadi Ayyad, Marrakech, Morocco). We are grateful for their  
22 financial support to the Agence Nationale de la Recherche (ANR-06-PADD-014) and to the  
23 Institut Français de la Biodiversité (IRD-IFB/INRA n°2886). Special thanks go to SudMed  
24 project (IRD/CESBIO, Marrakech) for their technical and logistical support.

25

1

2 Table 1

3 Land use/cover dynamics during 1964-2002 period in hectares.

<b>Land use/cover class</b>	<b>Area (ha) in 1964</b>	<b>Area (ha) in 2002</b>	<b>Gain (+) or loss (-) area during 1964-2002</b>	<b>Rate of change (%)</b>
<b>Forested areas</b>	5755	4563	<b>-1192</b>	<b>-20.7</b>
<b>Non-forested areas (Rangelands)</b>	7157	8266	+1109	+15.5
<b>Irrigated crops</b>	504	530	+26	+5.2
<b>Villages</b>	40	97	+57	<b>+143.6</b>
<b>Total</b>	13456	13456		

4

5

6

1 Table 2

2 Main changes of percent canopy cover and suspected drivers of change obtained from a  
 3 population survey.

Area	Dominant tree species	Vegetation change during 1964-2002 period	Cause of Change	Driver of change
<i>Agdal Louta</i>	<i>Q. ilex + J. phoenicea + J. Thurifera</i>	Increase of canopy cover	Extention of the <i>agdals</i> boundaries (on East side, 2004)	Overexploitation by locals (Intensive cutting of wood and leaves)
<i>Agdal Adazen</i>	<i>J. phoenicea</i>		Creation of an <i>agdal</i> (1979)	To control the intrusions of neighbours
<i>Agdal Ikhiss</i>	<i>Q. ilex + J. Thurifera</i>		Creation of an <i>agdal</i> (1958) + plantations by the forest office (1986)	To control the intrusions of neighbours
<i>Agdal Louta</i>	<i>Q. ilex + J. phoenicea + J. Thurifera</i>	Plantation of forest	Plantations of Arizona Cypress ( <i>Cupressus arizonica</i> ) by the forest office (~1995)	To prevent forest patterns from gathering (forest office decision or popular request)
<i>Agdal Itghssi</i>	<i>J. Thurifera</i>	Decrease of canopy cover	High pressure on a small forest area	Pole harvesting for building and difficult regeneration of Spanish juniper
All village- <i>Moucharikas</i> *			High pressure	Lack of control due of the distance from villages
<i>Agdal Manzart</i>	<i>J. Thurifera + Q. ilex</i>	Deforestation (complete disappearance of forest)	Forest exploitation upstream from the <i>agdal</i>	Proximity of an old <i>moucharika</i> * claimed by neighbours
<i>Agdal Assamer</i>	<i>J. Thurifera + Q. ilex</i>		Forest exploitation in the north-east of the <i>agdal</i>	
Intervillage- <i>moucharika</i> * between the <i>agdals</i> Manzart and Tagana	Bare soil + Some land cultivation		Competition for wood clear cutting	Unresolved conflicts for territorial claims between neighbours
Intervillage- <i>moucharika</i> * between the <i>agdals</i> Ikhiss and Assamer				

4 \* Non *agdal* forest area, usually remote from villages, used for wood supply.

1 Table 3

2 Vegetation characteristics for the three canopy cover change classes between 1964 and 2002, and the related statistics (SS: sum of squares; df: degrees  
3 of freedom).

<b>ANOVA</b>	<b>Increase</b>	<b>Stability</b>	<b>Regression</b>	<b>SS model</b>	<b>SS residual</b>	<b>df model</b>	<b>df residual</b>	<b>F (Fisher)</b>	<b>P (5%)</b>
Number of plots	<b>24</b>	<b>46</b>	<b>15</b>						
Total canopy cover (%)	29.6	20.6	11.3	3169	13895	2	82	9.35	<b>0.0002</b>
Crown volume (m <sup>3</sup> .ha <sup>-1</sup> )	5601.8	2770.9	1767.1	174544003	632984764	2	82	11.31	<b>&lt; 0.0001</b>
Basal area (m <sup>2</sup> .ha <sup>-1</sup> )	19.1	16.6	15.5	144	14932	2	82	0.40	0.6700
Trees height (m)	4.6	4.2	4.2	3	248	2	82	0.51	0.6000
Stem density (nb.ha <sup>-1</sup> )	246.8	558.3	122.9	2863895	14402811	2	82	8.15	<b>0.0006</b>
Plantation density (nb.ha <sup>-1</sup> )	12.5	49.9	197.7	340885	2906501	2	82	4.81	<b>0.0106</b>
Regenerations (nb.ha <sup>-1</sup> )	153.2	490.8	336.1	1815776	9934533	2	82	7.49	<b>0.0010</b>
Stumps (nb.ha <sup>-1</sup> )	22.5	103.9	75.3	104462	566257	2	82	7.56	<b>0.0010</b>
<b>Indexes</b>									
Crown volume / Basal area	293.1	166.9	114.3						
Nb of regenerations / Nb of stems	0.6	0.9	2.7						
Nb of stumps / Nb of stems	0.09	0.19	0.61						
<b>MANOVA</b>	<b>df1</b>	<b>df2</b>	<b>Lamba Wilk's</b>	<b>F (Rao)</b>	<b>P</b>				
	16	150	0.48	4.16	<b>&lt; 0.0001</b>				

4

5

6

1 Table 4

2 Multiple analysis of variance of vegetation characteristics inside and outside *agdal* areas (df: degrees of freedom).

<b>MANOVA</b>	<b>df1</b>	<b>df2</b>	<b>Lamba Wilk's</b>	<b>F (Rao's approx.)</b>	<b>P (5%)</b>
<b>All species</b>	8	65	0.76	5.12	< 0.0001
<b>Holm oak</b>	10	55	0.53	4.96	< 0.0001
<b>Junipers</b>	7	55	0.85	1.37	0.24

3

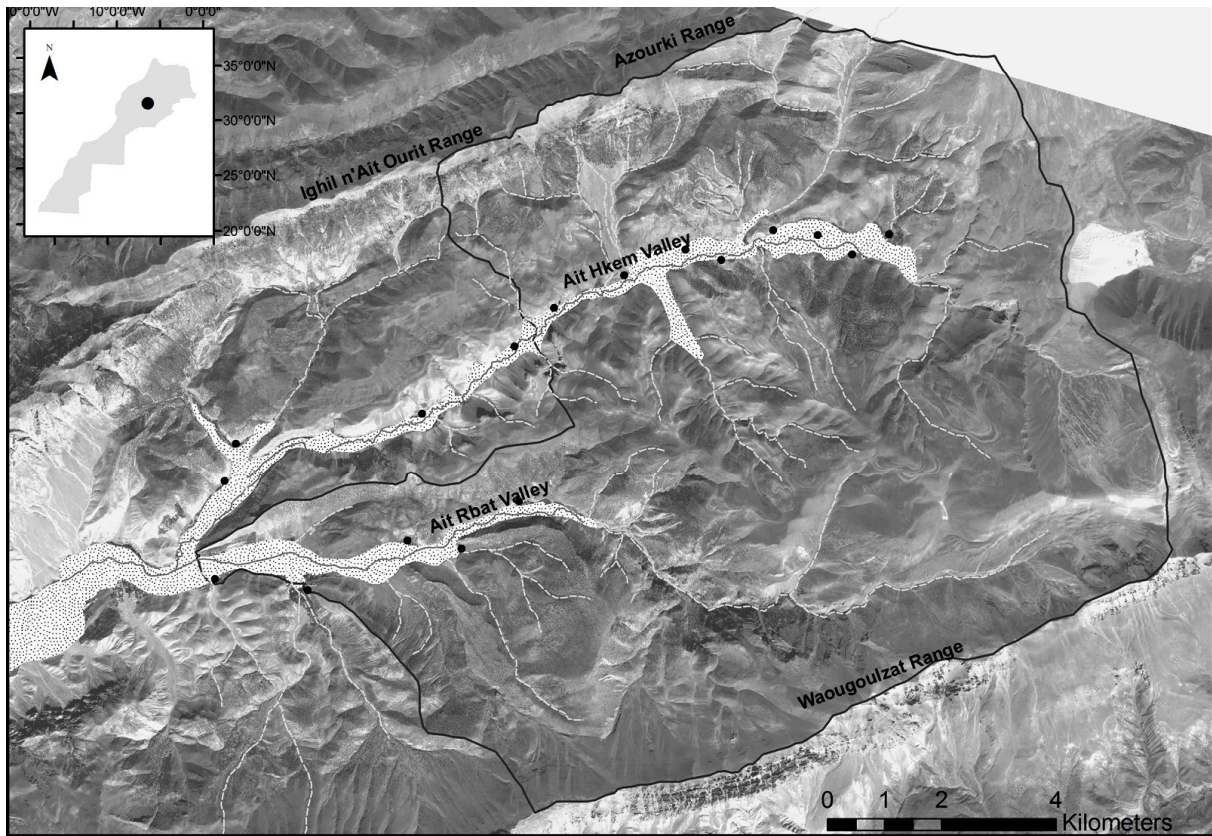


## 1 Table 5

2 Analysis of variance of vegetation characteristics inside and outside *agdal* areas, and related statistics

<b>ANOVA</b>	<b><i>Agdal</i></b>	<b>Non <i>Agdal</i></b>	<b>SS model</b>	<b>SS residual</b>	<b>df model</b>	<b>df residual</b>	<b>F (Fisher)</b>	<b>P (5%)</b>
<b>All species</b>								
Number of plots	<b>52</b>	<b>33</b>						
Total canopy cover (%)	27.2	12.4	4445	12619	1	83	29.24	< 0.0001
Basal area (m <sup>2</sup> .ha <sup>-1</sup> )	20.7	11.5	1703	13373	1	83	10.57	0.0016
Trees height (m)	4.6	3.8	12	239	1	83	4.28	0.0410
Crown volume (m <sup>3</sup> .ha <sup>-1</sup> )	4658.1	1399.7	214337810	593190957	1	83	29.99	< 0.0001
Natural stem density (nb.ha <sup>-1</sup> )	493.2	236.5	1330321	15936385	1	83	6.93	0.0100
Plantation density (nb.ha <sup>-1</sup> )	9.4	153.7	420213	2827173	1	83	12.34	0.0007
Regenerations (nb.ha <sup>-1</sup> )	310.5	459.2	446581	11303728	1	83	3.28	0.0730
Stumps (nb.ha <sup>-1</sup> )	61.2	99.1	29074	641645	1	83	3.76	0.0560
<b>Holm oak</b>								
Number of plots	<b>39</b>	<b>27</b>						
Trees canopy cover (%)	19.6	8.8	1842	7254	1	64	16.25	0.0001
Bush cover (%)	3.0	13.2	1666	4444	1	64	23.99	< 0.0001
Crown volume (m <sup>3</sup> .ha <sup>-1</sup> )	3238.9	847.9	91213730	393568425	1	64	14.83	0.0003
Basal area (m <sup>2</sup> .ha <sup>-1</sup> )	16.7	10.1	696	7539	1	64	5.91	0.0180
Trees height (m)	4.4	4.0	2	293	1	64	0.53	0.4700
Stem density (nb.ha <sup>-1</sup> )	554.1	248.0	1494117	13137617	1	64	7.28	0.0090
Poles (7.5 - 17.5 cm)	397.1	147.7	992212	11801289	1	64	5.38	0.0230
Small stems (17.5 - 27.5 cm)	68.2	56.7	2110	284887	1	64	0.47	0.4900
Medium stems (27.5 - 47.5 cm)	75.9	32.6	29916	385879	1	64	4.96	0.0290
Large stems (47.5 - 67.5 cm)	11.8	10.2	41	31576	1	64	0.08	0.7800
Very large stems (> 67.5 cm)	1.1	0.8	1	1099	1	64	0.06	0.8100
Crown transparency (%)	11.5	23.9	2472	24165	1	64	6.55	0.0120
Regenerations (nb.ha <sup>-1</sup> )	319.8	545.5	812766	8348710	1	64	6.23	0.0150
Stumps (nb.ha <sup>-1</sup> )	58.3	106.7	37395	516994	1	64	4.63	0.0350
Cuttings, crowns and stems (nb.ha <sup>-1</sup> )	988.1	673.8	1576677	82091524	1	64	1.23	0.2700
<b>Junipers</b>								
Number of plots	<b>42</b>	<b>21</b>						
Total canopy cover (%)	15.53	8.11	771	11998	1	61	3.92	0.0522
Basal area (m <sup>2</sup> .ha <sup>-1</sup> )	10.14	4.90	384	9313	1	61	2.52	0.1178
Trees height (m)	3.63	2.89	8	114	1	61	4.14	0.0463
Crown volume (m <sup>3</sup> .ha <sup>-1</sup> )	2759.63	1109.48	38121526	453549085	1	61	5.13	0.0271
Natural stem density (nb.ha <sup>-1</sup> )	96.11	52.69	26396	602558	1	61	2.67	0.1072
Regenerations (nb.ha <sup>-1</sup> )	3.74	0.75	125	1676	1	61	4.55	0.0368
Stumps (nb.ha <sup>-1</sup> )	0.96	0.81	0	122	1	61	0.17	0.6800

1 Fig. 1



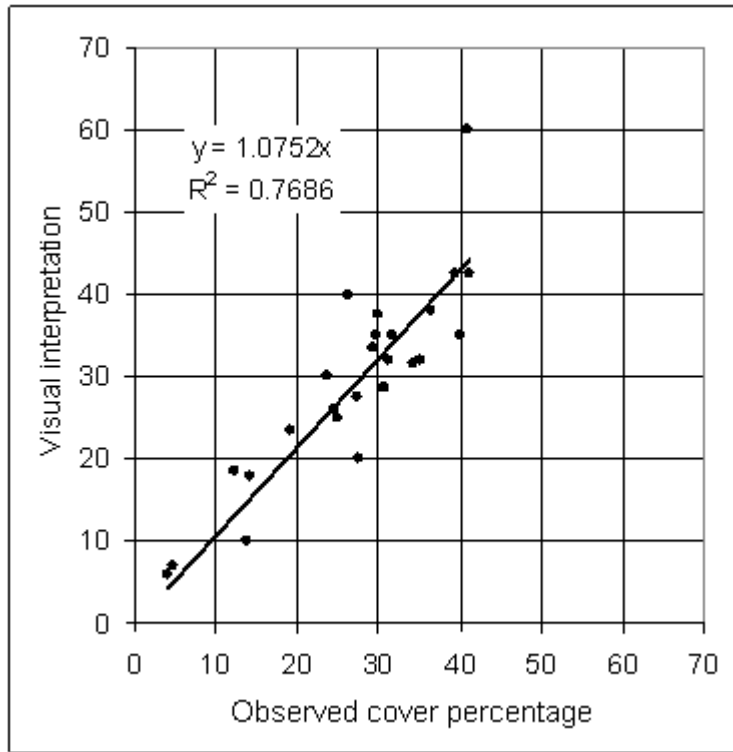
● Ait Bouguemez Valley    ▨ Irrigated crops    — Rivers    • Villages

2

3

1 Fig. 2

2



3

4

5

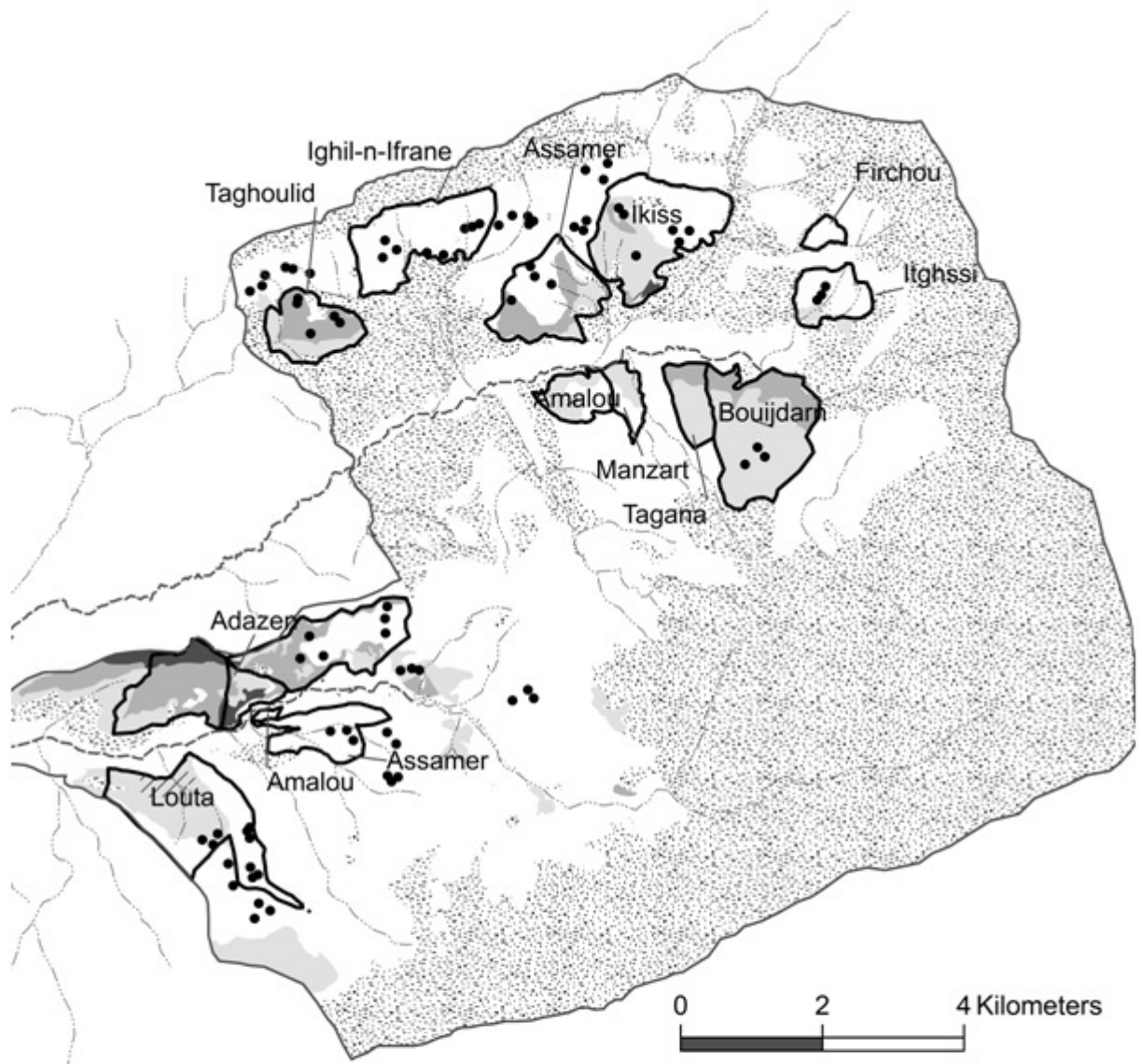
6

7

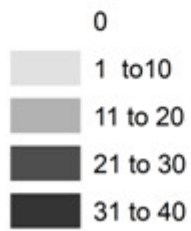
8

9

1 Fig. 3

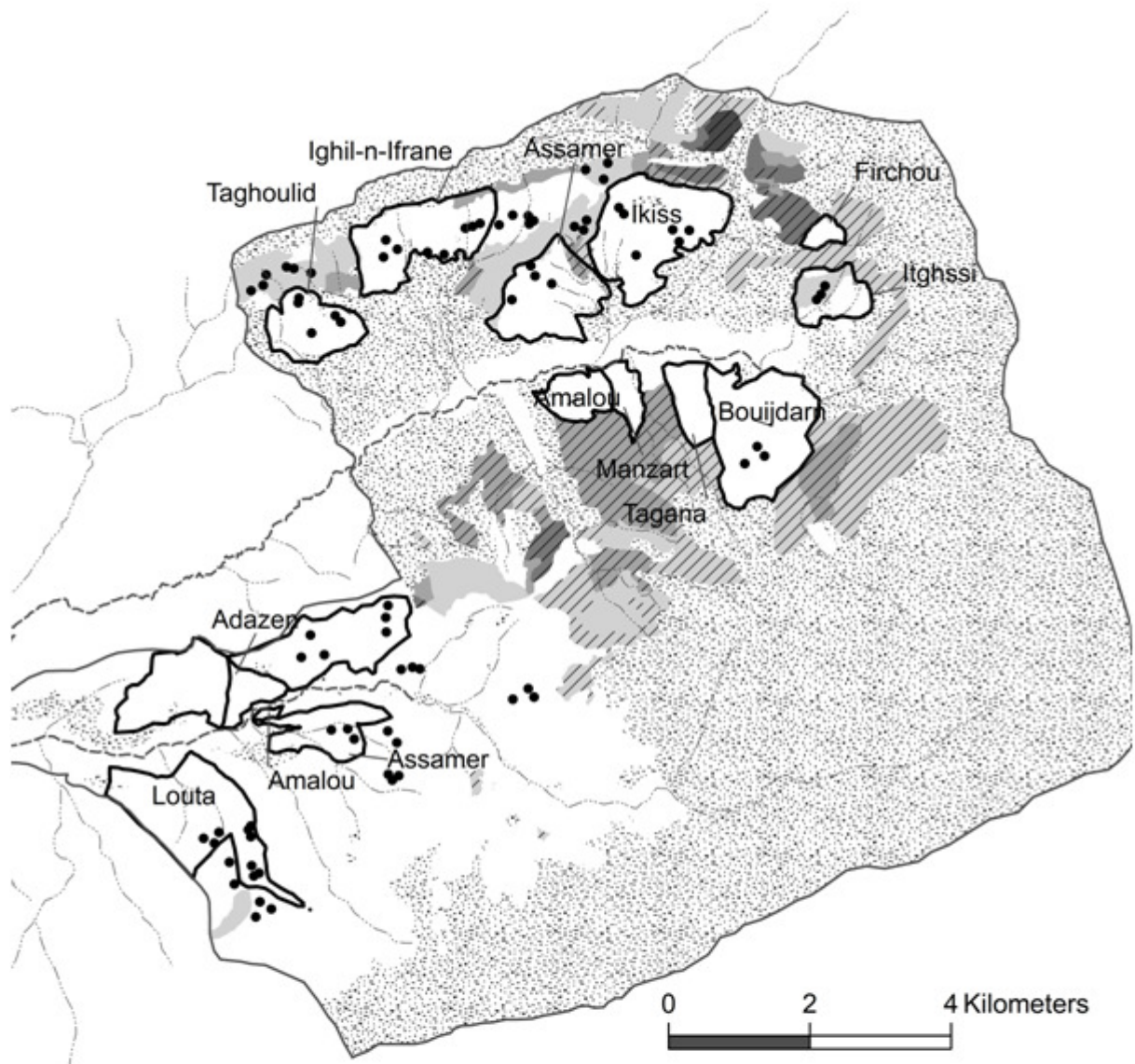


Increase of canopy cover (%)

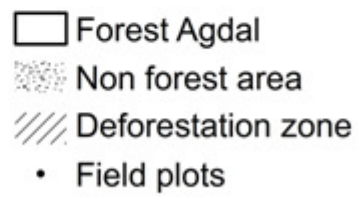
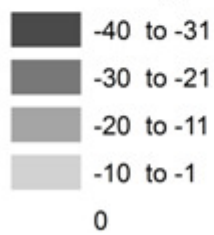


2  
3  
4

1 Fig. 4

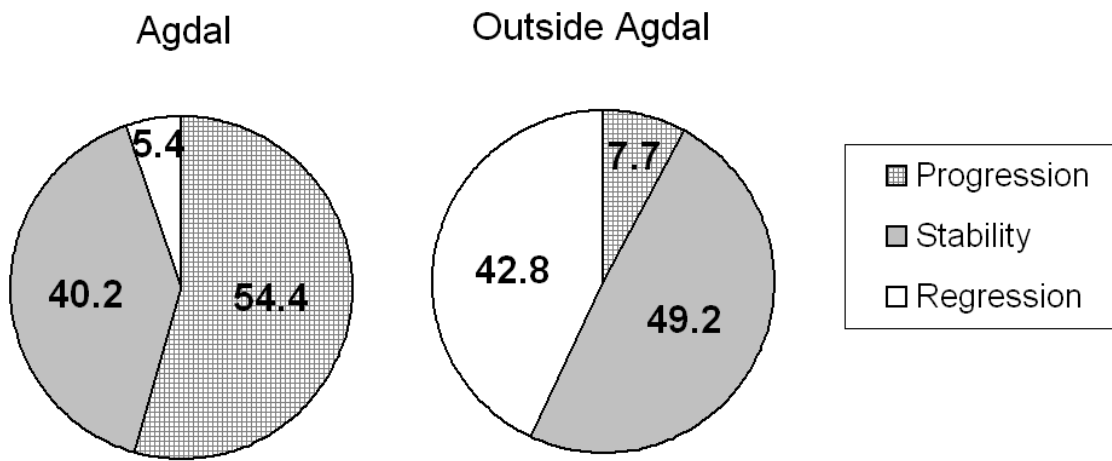


Decrease of canopy cover (%)



2  
3  
4  
5

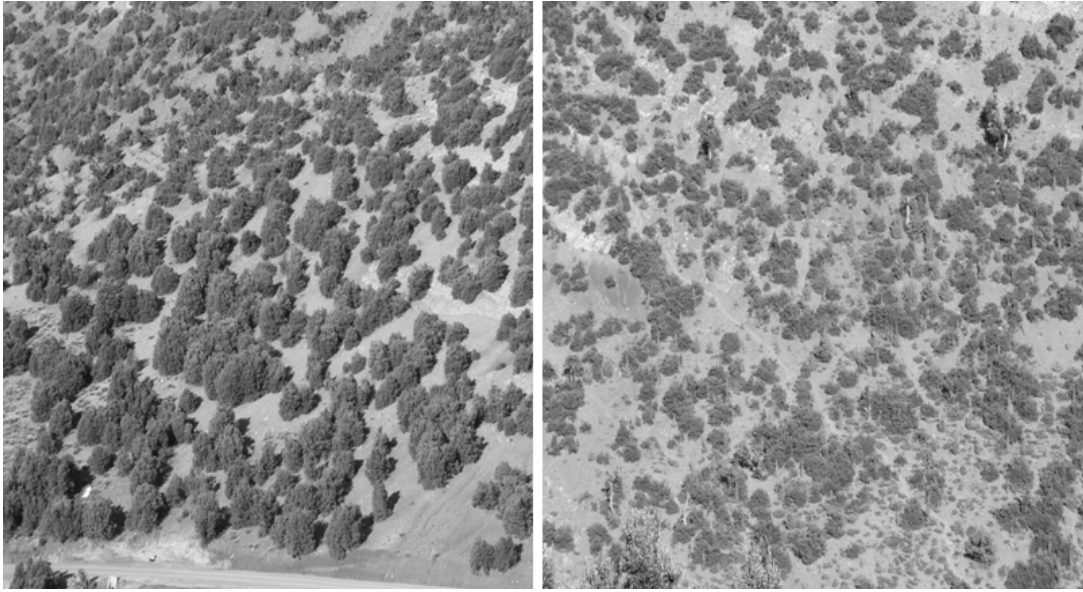
1 Fig. 5



2  
3  
4

1 Fig.6

2



3

4

5

1 Fig. 1. Location of the Aït Bouguemez Valley, High Atlas, Morocco.  
2  
3 Fig. 2. Comparison of the canopy cover percentages from visual interpretation and from  
4 ground observations.  
5  
6 Fig. 3. Positive changes of canopy cover percentage (increase) between 1964 and 2002 in the  
7 Aït Bouguemez Valley  
8  
9 Fig. 4. Negative changes of canopy cover percentage (decrease) between 1964 and 2002 in  
10 the Aït Bouguemez Valley  
11  
12 Fig. 5. Trend of wood vegetation according to the management modes  
13  
14 Fig. 6. Two stands of holm oak having the same ecological conditions, the left one is  
15 managed as *agdal*, the right one is outside *agdal* with cypress plantations.  
16  
17  
18  
19  
20  
21  
22  
23  
24  
25  
26  
27  
28  
29  
30  
31  
32  
33  
34



1

2 **References**

3 Armitage, D., (2005). Adaptive capacity and community-based natural resource management.

4 Environ. Manag. 35(6): 703-715.

5 Artz, N.E., Norton, B.E., O'Rourke, J.T., 1986. Management of common grazing lands:

6 Timahdite, Morocco, in: Bostid (Eds.), Proc. Conf.. Common Property Resource

7 Management. National Research Council, Washington, DC, pp. 259-280.

8 Aubert, P.M., Leroy, M., Auclair, L., 2009. Moroccan forestry policies and local forestry

9 management in the High Atlas : a cross analysis of forestry administration and local

10 institutions. Small-scale For. 8, 175-191.

11 Auclair, L., Alifriqui, M., 2005. Les *agdals* du Haut Atlas marocain : les enjeux d'une

12 recherche pluridisciplinaire. Cah. Rech, 3. Centre Jacques Berque, Rabat, pp. 60-79.

13 Auclair, L., 2005. De nouveaux enjeux pour de vieilles pratiques de gestion : les *agdals*

14 forestiers du Haut Atlas central (Maroc), in: Weber, J. (Eds.), Arrangements Institutionnels

15 et Gestion de la Biodiversité. Institut Français de la Biodiversité, Paris, pp. 74-79.

16 Auclair, L., 1996. L'appropriation communautaire des forêts dans le Haut Atlas marocain.

17 Cah. Sci. Hum. 32, 177-194.

18 Barbéro, M., Bonin, G., Loisel. R., Quezel.P., 1990. Changes and disturbances of forests

19 ecosystems caused by human activities in the western part of the Mediterranean basin.

20 Vegetatio 87, 151-173.

21 Becker, C.D., Ghimire, K., 2003. Synergy between traditional ecological knowledge and

22 conservation science supports forest preservation in Ecuador. Conservation Ecology 8(1): 1.

23 [online] URL: <http://www.consecol.org/vol8/iss1/art1/>

- 1 Berkes, F., 1999. Sacred Ecology: Traditional Ecological Knowledge and Resource  
2 Management. Taylor & Francis, Philadelphia.
- 3 Berkes, F., Colding, J., Folke, C., 2000. Rediscovery of traditional ecological knowledge as  
4 adaptive management. Ecol. Appl. 10:1251–1262.
- 5 Berque, J., 1978. Structures sociales du Haut Atlas. PUF, Paris.
- 6 Bertaudière, V., Montès, N., Badri, W., T. Gauquelin, T., 2001. Multicaulis structure of  
7 *Juniperus thurifera*: adaptation to a severe environment? CRAS, Série III, Sciences de la vie  
8 324:627-634.
- 9 Bourbouze, A., 1982. Déplacements des troupeaux et utilisation des parcours dans le Haut  
10 Atlas Central. Prod. pastor. Soc. 10, 34-45.
- 11 Bourbouze, A., 1999. Gestion de la mobilité et résistance des organisations pastorales des  
12 éleveurs du Haut Atlas marocain face aux transformations du contexte pastoral maghrébin,  
13 in: Niamir-Fuller, M., Turner, M.D. (Eds.), Managing mobility in African rangeland: the  
14 legitimization of transhumant pastoralism. Immediate technology Publications, London.
- 15 Bray, D.B., Ellis, E.A., Armijo-Canto, N., Beck, C.T., 2004. The institutional drivers of  
16 sustainable landscapes: a case study of the 'Mayan Zone' in Quintana Roo, Mexico. Land  
17 Use Pol. 21, 333–346.
- 18 Carmel, Y., Kadmon, R. 1998. Computerized classification of Mediterranean vegetation using  
19 panchromatic aerial photographs. J. Veg. Sci. 9, 445-454.
- 20 Cayuela, L., Rey Benayas, J.M., Echeverri, C., 2006. Clearance and fragmentation of tropical  
21 montane forests in the Highlands of Chiapas, Mexico (1975–2000). For. Ecol. Manag. 226,  
22 208-219.

- 1 Colchester, M., 1994. Sustaining the forests: The community based approach in South and  
2 South-East Asia. *Dev. Chang.* 25, 69–100.
- 3 Cordier, J.B., Genin, D., 2008. Pratiques paysannes d'exploitation des arbres et paysages  
4 forestiers du Haut Atlas marocain. *Rev. For. Fr.* 50, 571-588.
- 5 Couvreur, G., 1968. La vie pastorale dans le Haut Atlas Central. *Rev. Géog. Maroc* 13, 3-47.
- 6 Dalle, S.P., De Blois, S., Caballero, J., Johns, T., 2006. Integrating analyses of local land-use  
7 regulations, cultural perceptions and land-use/land cover data for assessing the success of  
8 community-based conservation. *For. Ecol. Manag.* 22, 370-383.
- 9 Davis, D.K., 2005. Potential forests: degradation narratives, science, and environmental  
10 policy in protectorate Morocco, 1912-1956. *Environ. Hist.* 10, 211-238.
- 11 Defourny, P., 1990. Méthode d'évaluation quantitative de la végétation ligneuse en région  
12 soudano-sahélienne à partir de données Landsat TM (Burkina Faso), in: Lafrance, P.,  
13 Dubois, J.M. (Eds), *Apports de la télédétection dans la lutte contre la sécheresse*. John  
14 Libbey Eurotext, Montrouge, pp. 63-74.
- 15 Epp, H., Peden, D., Herlocker, D., 1983. The use of large scale aerial photography to  
16 determine wood biomass in the arid and semi-arid areas of Kenya, in: *Proc. International*  
17 *Symposium of the VII commission of the International Society of photogrammetry and*  
18 *remote Sensing*, Toulouse, France, pp. 415-422.
- 19 Espelta, J. M., Habrouk, A., Retana, J., 2006. Response to natural and simulated browsing of  
20 two Mediterranean oaks with contrasting leaf habit after a wildfire. *Ann. For. Sci.* 63, 441-  
21 447.
- 22 Fairhead, J., Leach, M., 1996. *Misreading the African landscape: Society and Ecology in the*  
23 *Forest Savanna-Mosaic*. Cambridge University Press, Cambridge.

- 1 FAO, 1995. Forest resources assessment 1990, Non tropical developing countries.  
2 <http://www.fao.org/docrep/007/v8050e/v8050e07.htm> (accessed 03/05/2010).
- 3 Folke, C. 2004. Traditional knowledge in social–ecological systems. *Ecol.Soc.* 9(3): 7.  
4 [online] URL: <http://www.ecologyandsociety.org/vol9/iss3/art7/>
- 5 Fromard, F., Gauquelin, T., 1993. Thuriferous juniper stands in Morocco: Research and  
6 conservation for an endangered environment and species. *Unasylva*, 44, 52-58.
- 7 Gauquelin, T., Bertaudière, V., Montès N., Badri, W., Asmode, J.F., 2000. Endangered stands  
8 of thuriferous juniper in the western Mediterranean basin: ecological status, conservation  
9 and management. *Biodivers. Conserv.* 8, 1476-1498.
- 10 Gautam, A.P., Shivakoti, G.P., Webb, E.L., 2004. Forest cover change, physiography, local  
11 economy, and institutions in a mountain watershed in Nepal. *Environ. Manag.* 33, 48–61
- 12 Gautam, A.P., Webb E.L., Eiumnoh A., 2002. GIS assessment of land use/land cover changes  
13 associated with community forestry implementation in the Middle Hills of Nepal. *Mt. Res.*  
14 *Dev.* 22, 63–69
- 15 Genin, D., Hervé, D., Rivière, G., 1995. Relation société environnement : la reproduction des  
16 systèmes de culture à jachère longue pâturée dans les Andes. *Cah. Rech. Dév.*, 41: 20-30.
- 17 Genin, D., Fouilleron, B., Kerautret, L., 2009. Un tempo bien tempéré : Place et rôles des  
18 *agdals* dans les systèmes d'élevage du Haut atlas central, in: Auclair, L., Alifriqui, M.,  
19 (Eds.), *Agdals: Société et gestion des ressources dans l'Atlas marocain*. IRCAM-IRD  
20 éditions, Rabat-Marseille, (in press).
- 21 Gilles, J., Hammoudi, A., Mahdi, M., 1992. Oukaïmeden, Morocco: A High mountain *agdal*,  
22 in: Bromley, D.W., Feeny, D., McKean, M.A., Peters, P., Gilles, J.L., Oakerson, R.J.,  
23 Runge, C.F., Thomson, J.T., (Eds.): *Making the Common work: Theory, Practice, and*  
24 *Policy*. Institute for Contemporary Studies Press, San Francisco, pp. 229-246.

- 1 Godron, M., Daget, P., Long, G., Sauvage. C., Emberger. L., Le Floch. E., Poissonet. J.,  
2 Wacquant. J.P, 1983. Code pour le relevé méthodique de la végétation et du milieu. CNRS  
3 éditions, Paris.
- 4 Hall, F.G., Botkin, D.B., Strebel, D.E., Woods, K.D., Goetz, S.J., 1991. Large-Scale Patterns  
5 of Forest Succession as Determined by Remote Sensing. *Ecology*, 72, 628-640.
- 6 Hudak, A.T., Wessman, C.A., 1998. Textural Analysis of Historical Aerial Photography to  
7 Characterize Woody Plant Encroachment in South African Savanna. *Remote Sens. Environ.*  
8 66, 317–330.
- 9 Ilahiane, H., 1999. The Berber *agdal* Institution: Indigenous range management in the Atlas  
10 Mountainous. *Ethnology* 38, 21-45.
- 11 Ingram, J.C., Dawson, T.P., 2006. Forest Cover, Condition, and Ecology in Human-Impacted  
12 Forests, South-Eastern Madagascar. *Conserv. and Soc.*, 4, 194-230.
- 13 Jackson, W.J., Tamrakar R. M., Hunt S., Shepherd K. R., 1998. Land-use changes in two  
14 Middle Hill districts of Nepal. *Mt. Res. Dev.* 18, 193–212.
- 15 Kadmon, R., Harari-Kremer, R., 1999. Studying Long-Term Vegetation Dynamics Using  
16 Digital Processing of Historical Aerial Photographs. *Remote Sens. Environ.* 68, 164–176.
- 17 Kelbessa, M., 2005. The Rehabilitation of Indigenous Environmental Ethics in Africa.  
18 *Diogenes* 52, 17-34.
- 19 Ko, D., Bristow, N., Greenwood, D., Weisberg, P., 2009. Canopy Cover Estimation in  
20 Semiarid Woodlands: Comparison of Field-Based and Remote Sensing Methods. *For. Sci.*  
21 55, 132- 141.
- 22 Lamb, H. F., Damblon, F., Maxted, R. W., 1991. Human Impact on the Vegetation of the  
23 Middle Atlas, Morocco, during the Last 5000 Years. *J. Biogeogr.* 18, 519-532.

- 1 Lecestre-Rollier, B., 1986. L'espace collectif et les conflits chez les Aït Bouguemez (Haut  
2 Atlas marocain). Tech. Cult. 7, 95-111.
- 3 Lecestre-Rollier, B., 1992. Anthropologie d'un espace montagnard : Les Aït Bouguemez du  
4 Haut Atlas marocain. Thèse de doctorat, Université Paris V, France.
- 5 Mascia, M.B., Brosius, J.P., Dobson, T.A., Forbes, B.C., Horowitz, L., McKean, M.A.,  
6 Turner, N.J., 2003. Conservation and the social sciences. Conserv. Biol. 17, 649–650.
- 7 Masri, A., 1991. The tradition of hema as a land tenure institution in arid land management:  
8 Syria. FAO editions, Rome.
- 9 MCEF, 1999. Programme Forestier National, Rapport Final. Ministère Chargé des Eaux et  
10 Forêts, Rabat, Maroc.
- 11 Michon, G., De Foresta, H., Levang P., Verdeaux, F., 2007. Domestic forests: a new  
12 paradigm for integrating local communities' forestry into tropical forest science. Ecology  
13 and Society, **12**(2): 1. [online] URL: <http://www.ecologyandsociety.org/vol12/iss2/art1/>
- 14 Montès, N., Gauquelin, T., Badri, W., Bertaudière, V., Zaoui, El H., 2000. A non-destructive  
15 method for estimating above-ground forest biomass in threatened woodlands. For. Ecol.  
16 Manag. 130, 37-46.
- 17 Montès, N., Bertaudière-Montès, V., Badri W., Zaoui, E. H., Gauquelin, T., 2002. Biomass  
18 and nutrient content of a semi-arid mountain ecosystem: the *Juniperus thurifera* L.  
19 woodland of Azzaden Valley (Morocco). For. Ecol. Manag. 166, 35-43.
- 20 Niamir, M., 1990. Traditional woodland management techniques of African pastoralists.  
21 Unasylva 160, 49-58.
- 22 Nygard, R., Sawadogo, L., Elfving, B., 2004. Wood-fuel yields in short-rotation coppice  
23 growth in the north Sudan savanna in Burkina Faso. For. Ecol. Manag. 189, 77–85.

- 1 Olsson, E.G.A., Austrheim, G., Grenne, S.N., 2000. Landscape change patterns in mountains,  
2 land use and environmental diversity, Mid-Norway 1960–1993. *Landsc. Ecol.* 15, 155–170.
- 3 Pardé, J., Bouchon, J., 1988. *Dendrométrie*. ENGREF Éditions, Paris.
- 4 Plummer, R., FitzGibbon, J., 2004. Co-management of natural resources: a proposed  
5 framework. *Environ. Manag.* 33, 876–885.
- 6 RDH50, 2006. Fifty years of Human development and Prospects for 2025. Official Report,  
7 [www.rdh50.ma](http://www.rdh50.ma) (assessed 03/05/2010).
- 8 Retana, J., Riba, M., Castell, C., Espelta, J. M., 1992. Regeneration by sprouting of Holm  
9 Oak (*Quercus ilex*) stands exploited by selection thinning. *Plant Ecol.* 99-100, 355-364 .
- 10 Rousset, O., 1999. Dynamique de régénération et interactions positives dans les successions  
11 végétales, Installation de *Buxus sempervirens* L. et *Quercus humilis* Miller sur les pelouses  
12 des Grands Causses gérées par le pâturage. Thèse de doctorat, Université des Sciences et  
13 Techniques du Languedoc, Montpellier, France.
- 14 Semwal, R.L., Nautiyal, S., Sen, K.K. Rana, U., Maikhuri, R.K., Rao, K.S., Saxena, K.G.,  
15 2004. Patterns and ecological implications of agricultural land-use changes: a case study  
16 from central Himalaya, India. *Agric. Ecosyst. Environ.* 102, 81–92.
- 17 Spencer, R.D., Hall, R.J., 1988. Canadian large-scale aerial photographic systems (LSP).  
18 *Photogramm. Eng. Remote Sens.* 54, 475-482.
- 19 Stevenson, M., 2005. *Traditional Knowledge and Sustainable Forest Management*.  
20 Sustainable Forest Management Network, Edmonton, Alberta. 18 pp.
- 21 Taillefumier, F., Piégay, H., 2003. Contemporary land use changes in prealpine  
22 Mediterranean mountains: a multivariate GIS-based approach applied to two municipalities  
23 in the Southern French Prealps. *Catena*, 51, 267-293.

- 1 Tuominen, S., Pekkarinen, A., 2004. Local radiometric correction of digital aerial  
2 photographs for multi source forest inventory. *Remote Sens. Environ.* 89, 72–82.
- 3 Tuominen, S., Pekkarinen, A., 2005. Performance of different spectral and textural aerial  
4 photograph features in multi-source forest inventory. *Remote Sens. Environ.* 94, 256–268.
- 5 Uprety L. (2008). Role of institutions and organizations for the sustainable management of  
6 forest and pasture as common property resources in Nepal: an overview of the indigenous  
7 and traditional practices. *Dhaulagiri J. of Sociol.* 2, 31-64.
- 8 Venema, B., 2002. The vitality of local political institutions in the middle Atlas, Morocco.  
9 *Ethnology* 41, 103-17.
- 10 Vermeulen, S.J., 1996. Cutting of trees by local residents in a communal area and an adjacent  
11 state forest in Zimbabwe. *For. Ecol. Manag.* 81, 101–111.
- 12 Warren, P.L., Dunford, C., 1986. Sampling semiarid vegetation with large-scale aerial  
13 photography. *ITC. J.* 4, 273-279.
- 14 Wimberly, M.C., Ohmann, J.L., 2004. A multi-scale assessment of human and environmental  
15 constraints on forest land cover change on the Oregon (USA) coast range. *Landsc. Ecol.* 19,  
16 631–646.
- 17